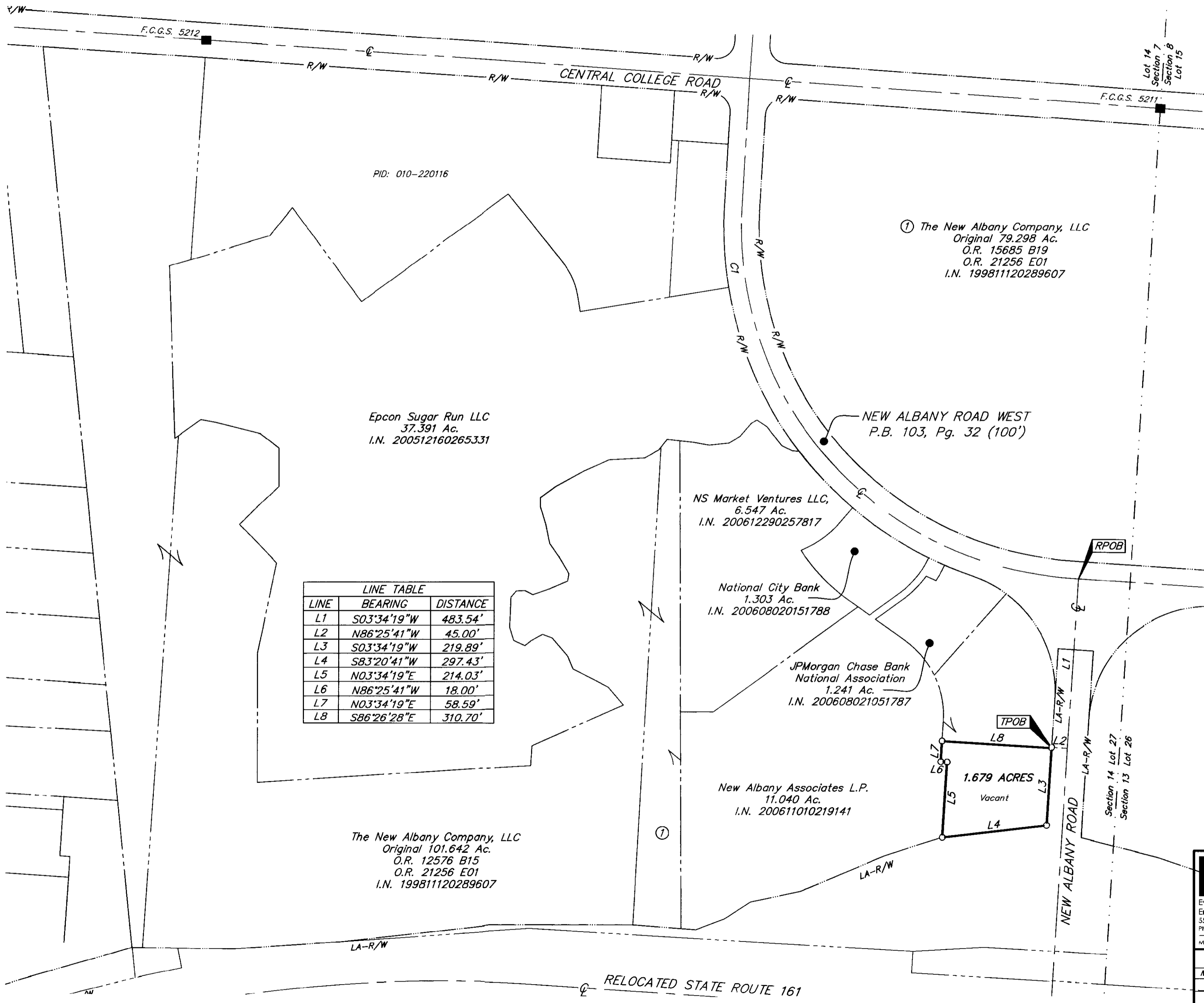


SURVEY OF ACREAGE PARCEL

SECTION 14, QUARTER TOWNSHIP 2, TOWNSHIP 2, RANGE 16

UNITED STATES MILITARY LANDS

CITY OF COLUMBUS, FRANKLIN COUNTY, OHIO



LINE	BEARING	DISTANCE
L1	S03°34'19"W	483.54'
L2	N86°25'41"W	45.00'
L3	S03°34'19"W	219.89'
L4	S83°20'41"W	297.43'
L5	N03°34'19"E	214.03'
L6	N86°25'41"W	18.00'
L7	N03°34'19"E	58.59'
L8	S86°26'28"E	310.70'

① The New Albany Company, LLC
 Original 79.298 Ac.
 O.R. 15685 B19
 O.R. 21256 E01
 I.N. 199811120289607

Epcon Sugar Run LLC
 37.391 Ac.
 I.N. 200512160265331

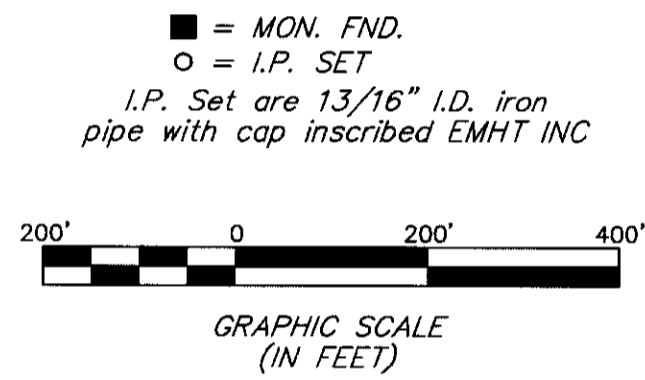
NS Market Ventures LLC,
 6.547 Ac.
 I.N. 200612290257817

National City Bank
 1.303 Ac.
 I.N. 200608020151788

JPMorgan Chase Bank
 National Association
 1.241 Ac.
 I.N. 200608021051787

New Albany Associates L.P.
 11.040 Ac.
 I.N. 200611010219141

The New Albany Company, LLC
 Original 101.642 Ac.
 O.R. 12576 B15
 O.R. 21256 E01
 I.N. 199811120289607



BASIS OF BEARINGS: Bearings are based on the Ohio State Plane Coordinate System as per NAD83, South Zone (1986 Adjustment). Control for bearings was from coordinates of monuments Frank 5574 and Frank 5113, with a portion of Central College Road having a bearing of South 86° 09' 36" East, established by the Franklin County Engineering Department, using Global Positioning System procedures and equipment.

STATE OF OHIO
 HEATHER L. KING
 S-8307
 REGISTERED PROFESSIONAL SURVEYOR
 Professional Surveyor No. 8307

EMHT <small>Evans, Mechwart, Hambleton & Tilton, Inc. Engineers • Surveyors • Planners • Scientists 5500 New Albany Road, Columbus, OH 43054 Phone: 614.775.4500 Fax: 614.775.4800</small>	Date: June 8, 2007	
	Scale: 1" = 200'	
	Job No: 2006-0682	
	Sheet: 1 of 1	
REVISIONS		
MARK	DATE	DESCRIPTION

\\CMHDATA1\SURVEY\PROJECT\20060682\DWG\60682BV.DWG (18x24 LANDSCAPE) - NO XREFS - LAST SAVED BY JJAMS [6/8/2007 10:45:34 AM] - PLOTTED BY JJAMS [6/8/2007 10:45:34 AM]