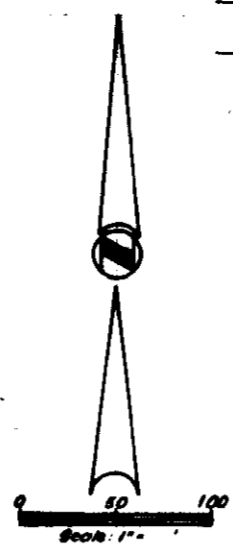
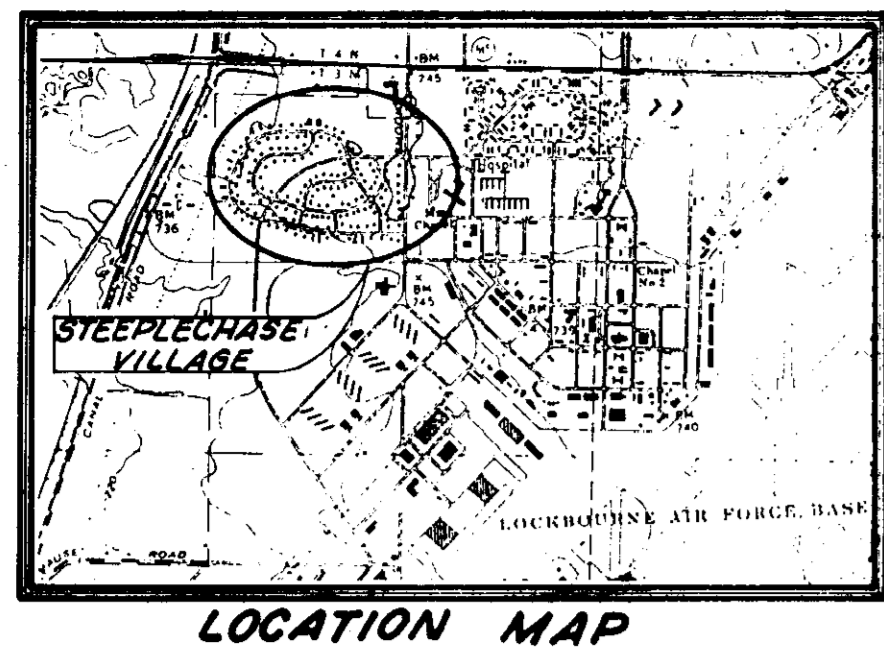


SURVEY OF STEEPLECHASE VILLAGE FORMERLY CAPEHART HOUSING AREA

for
**COMMONWEALTH LAND TITLE
 INSURANCE COMPANY**
 and
CHEMICAL MORTGAGE COMPANY



PREMISES SUBJECT ALSO TO EASEMENTS:
 FROM PETER H. MCCANN TO SOUTH CENTRAL
 POWER COMPANY, O.R. 6678, D06;
 FROM PETER H. MCCANN TO PICKAWAY
 CABLEVISION, INC., O.R. 6664, A17.
 EASEMENTS FOLLOW EXISTING UTILITY LINE AS
 SHOWN ON PLAT.

Chive Dyer
 O.R. 60618, Pg. 1-14

Norman E. Bauman
 O.R. 6585, Pg. 277
 15.905 AC.

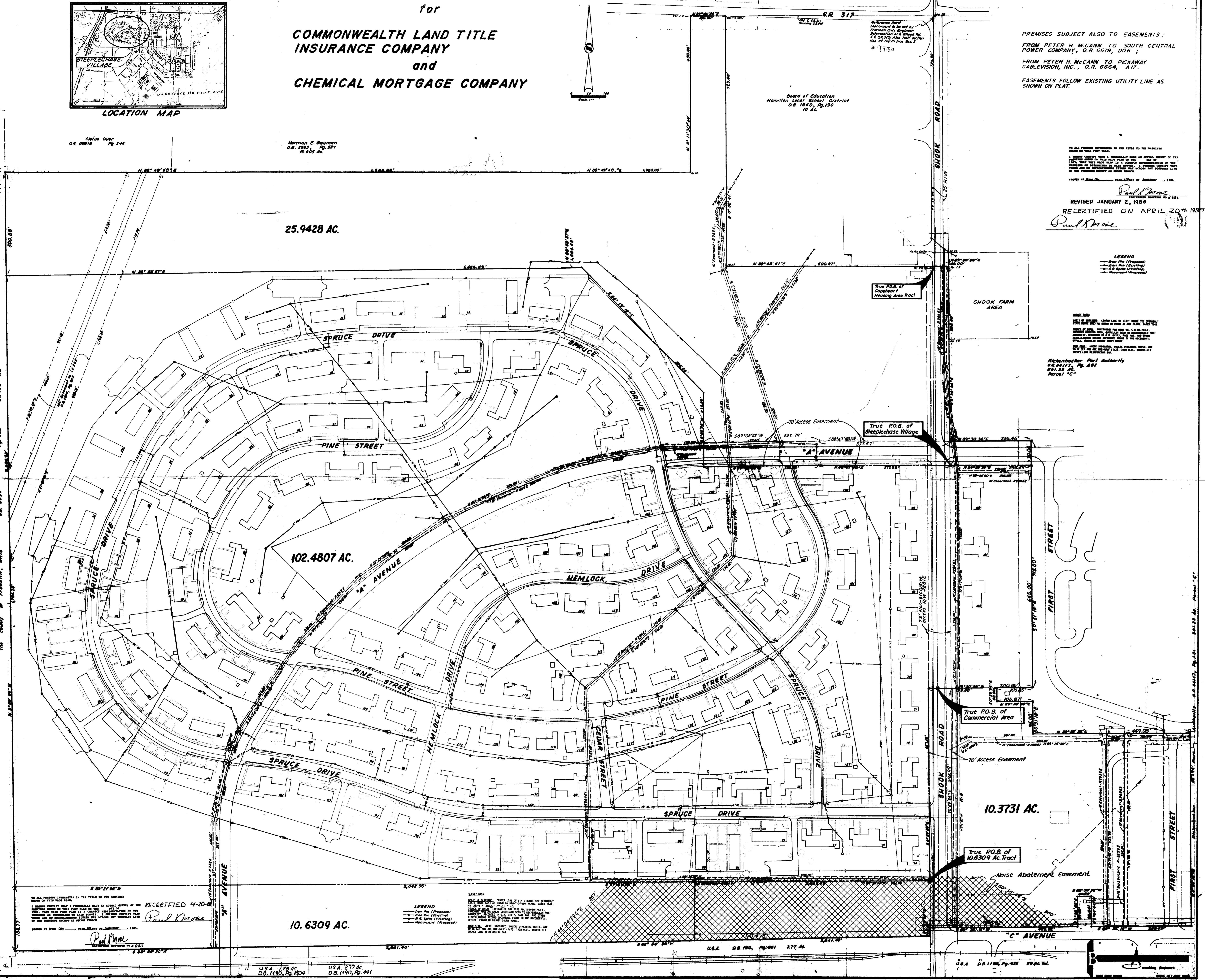
Board of Education
 Hamilton Local School District
 O.R. 1840, Pg. 190
 10 AC.

TO ALL PERSONS INTERESTED IN THE TITLE TO THE PREMISES
 SHOWN ON THIS PLAT:
 I, the undersigned, being a duly qualified and sworn Surveyor of this
 State of Ohio, do hereby certify that the above is a true and correct
 copy of the original plat as the same appears on the records of the
 Surveyors Office, Franklin County, Ohio, and that the same is a true
 and correct copy of the original plat as the same appears on the records
 of the Surveyors Office, Franklin County, Ohio.

Paul Moore
 REVISOR JANUARY 2, 1956
 RECERTIFIED ON APRIL 20, 1957
 Paul Moore

LEGEND
 --- Draw Plat (Proposed)
 --- Draw Plat (Existing)
 --- Easement (Existing)
 --- Easement (Proposed)

RECORDS:
 O.R. 60618, Pg. 1-14
 O.R. 6585, Pg. 277
 O.R. 1840, Pg. 190
 O.R. 6664, A17
 O.R. 6678, D06
 O.R. 1140, Pg. 438
 O.R. 1140, Pg. 439
 O.R. 1140, Pg. 440
 O.R. 1140, Pg. 441
 O.R. 1140, Pg. 442
 O.R. 1140, Pg. 443
 O.R. 1140, Pg. 444
 O.R. 1140, Pg. 445
 O.R. 1140, Pg. 446
 O.R. 1140, Pg. 447
 O.R. 1140, Pg. 448
 O.R. 1140, Pg. 449
 O.R. 1140, Pg. 450
 O.R. 1140, Pg. 451
 O.R. 1140, Pg. 452
 O.R. 1140, Pg. 453
 O.R. 1140, Pg. 454
 O.R. 1140, Pg. 455
 O.R. 1140, Pg. 456
 O.R. 1140, Pg. 457
 O.R. 1140, Pg. 458
 O.R. 1140, Pg. 459
 O.R. 1140, Pg. 460
 O.R. 1140, Pg. 461
 O.R. 1140, Pg. 462
 O.R. 1140, Pg. 463
 O.R. 1140, Pg. 464
 O.R. 1140, Pg. 465
 O.R. 1140, Pg. 466
 O.R. 1140, Pg. 467
 O.R. 1140, Pg. 468
 O.R. 1140, Pg. 469
 O.R. 1140, Pg. 470
 O.R. 1140, Pg. 471
 O.R. 1140, Pg. 472
 O.R. 1140, Pg. 473
 O.R. 1140, Pg. 474
 O.R. 1140, Pg. 475
 O.R. 1140, Pg. 476
 O.R. 1140, Pg. 477
 O.R. 1140, Pg. 478
 O.R. 1140, Pg. 479
 O.R. 1140, Pg. 480
 O.R. 1140, Pg. 481
 O.R. 1140, Pg. 482
 O.R. 1140, Pg. 483
 O.R. 1140, Pg. 484
 O.R. 1140, Pg. 485
 O.R. 1140, Pg. 486
 O.R. 1140, Pg. 487
 O.R. 1140, Pg. 488
 O.R. 1140, Pg. 489
 O.R. 1140, Pg. 490
 O.R. 1140, Pg. 491
 O.R. 1140, Pg. 492
 O.R. 1140, Pg. 493
 O.R. 1140, Pg. 494
 O.R. 1140, Pg. 495
 O.R. 1140, Pg. 496
 O.R. 1140, Pg. 497
 O.R. 1140, Pg. 498
 O.R. 1140, Pg. 499
 O.R. 1140, Pg. 500



RECERTIFIED 4-20-57
 Paul Moore

LEGEND
 --- Draw Plat (Proposed)
 --- Draw Plat (Existing)
 --- Easement (Existing)
 --- Easement (Proposed)

SURVEY DATA:
 BEARS BEARING, CENTER LINE OF STATE ROUTE 37, FORMERLY
 U.S. HIGHWAY 37, IS SHOWN ON THIS PLAT. THIS ROAD
 WAS SURVEYED BY JOHN W. BROWN, SURVEYOR, IN 1880.
 THE BEARING OF THIS ROAD IS S 89° 51' 30" W
 AND THE DISTANCE IS 1.2500 MILES.
 THE BEARING OF STATE ROUTE 37, FORMERLY
 U.S. HIGHWAY 37, IS SHOWN ON THIS PLAT. THIS ROAD
 WAS SURVEYED BY JOHN W. BROWN, SURVEYOR, IN 1880.
 THE BEARING OF THIS ROAD IS S 89° 51' 30" W
 AND THE DISTANCE IS 1.2500 MILES.
 THE BEARING OF STATE ROUTE 37, FORMERLY
 U.S. HIGHWAY 37, IS SHOWN ON THIS PLAT. THIS ROAD
 WAS SURVEYED BY JOHN W. BROWN, SURVEYOR, IN 1880.
 THE BEARING OF THIS ROAD IS S 89° 51' 30" W
 AND THE DISTANCE IS 1.2500 MILES.

Paul Moore
 O.R. 60618, Pg. 1-14

Norman E. Bauman
 O.R. 6585, Pg. 277
 15.905 AC.

Board of Education
 Hamilton Local School District
 O.R. 1840, Pg. 190
 10 AC.

REVISOR JANUARY 2, 1956
 RECERTIFIED ON APRIL 20, 1957
 Paul Moore

LEGEND
 --- Draw Plat (Proposed)
 --- Draw Plat (Existing)
 --- Easement (Existing)
 --- Easement (Proposed)

RECORDS:
 O.R. 60618, Pg. 1-14
 O.R. 6585, Pg. 277
 O.R. 1840, Pg. 190
 O.R. 6664, A17
 O.R. 6678, D06
 O.R. 1140, Pg. 438
 O.R. 1140, Pg. 439
 O.R. 1140, Pg. 440
 O.R. 1140, Pg. 441
 O.R. 1140, Pg. 442
 O.R. 1140, Pg. 443
 O.R. 1140, Pg. 444
 O.R. 1140, Pg. 445
 O.R. 1140, Pg. 446
 O.R. 1140, Pg. 447
 O.R. 1140, Pg. 448
 O.R. 1140, Pg. 449
 O.R. 1140, Pg. 450
 O.R. 1140, Pg. 451
 O.R. 1140, Pg. 452
 O.R. 1140, Pg. 453
 O.R. 1140, Pg. 454
 O.R. 1140, Pg. 455
 O.R. 1140, Pg. 456
 O.R. 1140, Pg. 457
 O.R. 1140, Pg. 458
 O.R. 1140, Pg. 459
 O.R. 1140, Pg. 460
 O.R. 1140, Pg. 461
 O.R. 1140, Pg. 462
 O.R. 1140, Pg. 463
 O.R. 1140, Pg. 464
 O.R. 1140, Pg. 465
 O.R. 1140, Pg. 466
 O.R. 1140, Pg. 467
 O.R. 1140, Pg. 468
 O.R. 1140, Pg. 469
 O.R. 1140, Pg. 470
 O.R. 1140, Pg. 471
 O.R. 1140, Pg. 472
 O.R. 1140, Pg. 473
 O.R. 1140, Pg. 474
 O.R. 1140, Pg. 475
 O.R. 1140, Pg. 476
 O.R. 1140, Pg. 477
 O.R. 1140, Pg. 478
 O.R. 1140, Pg. 479
 O.R. 1140, Pg. 480
 O.R. 1140, Pg. 481
 O.R. 1140, Pg. 482
 O.R. 1140, Pg. 483
 O.R. 1140, Pg. 484
 O.R. 1140, Pg. 485
 O.R. 1140, Pg. 486
 O.R. 1140, Pg. 487
 O.R. 1140, Pg. 488
 O.R. 1140, Pg. 489
 O.R. 1140, Pg. 490
 O.R. 1140, Pg. 491
 O.R. 1140, Pg. 492
 O.R. 1140, Pg. 493
 O.R. 1140, Pg. 494
 O.R. 1140, Pg. 495
 O.R. 1140, Pg. 496
 O.R. 1140, Pg. 497
 O.R. 1140, Pg. 498
 O.R. 1140, Pg. 499
 O.R. 1140, Pg. 500