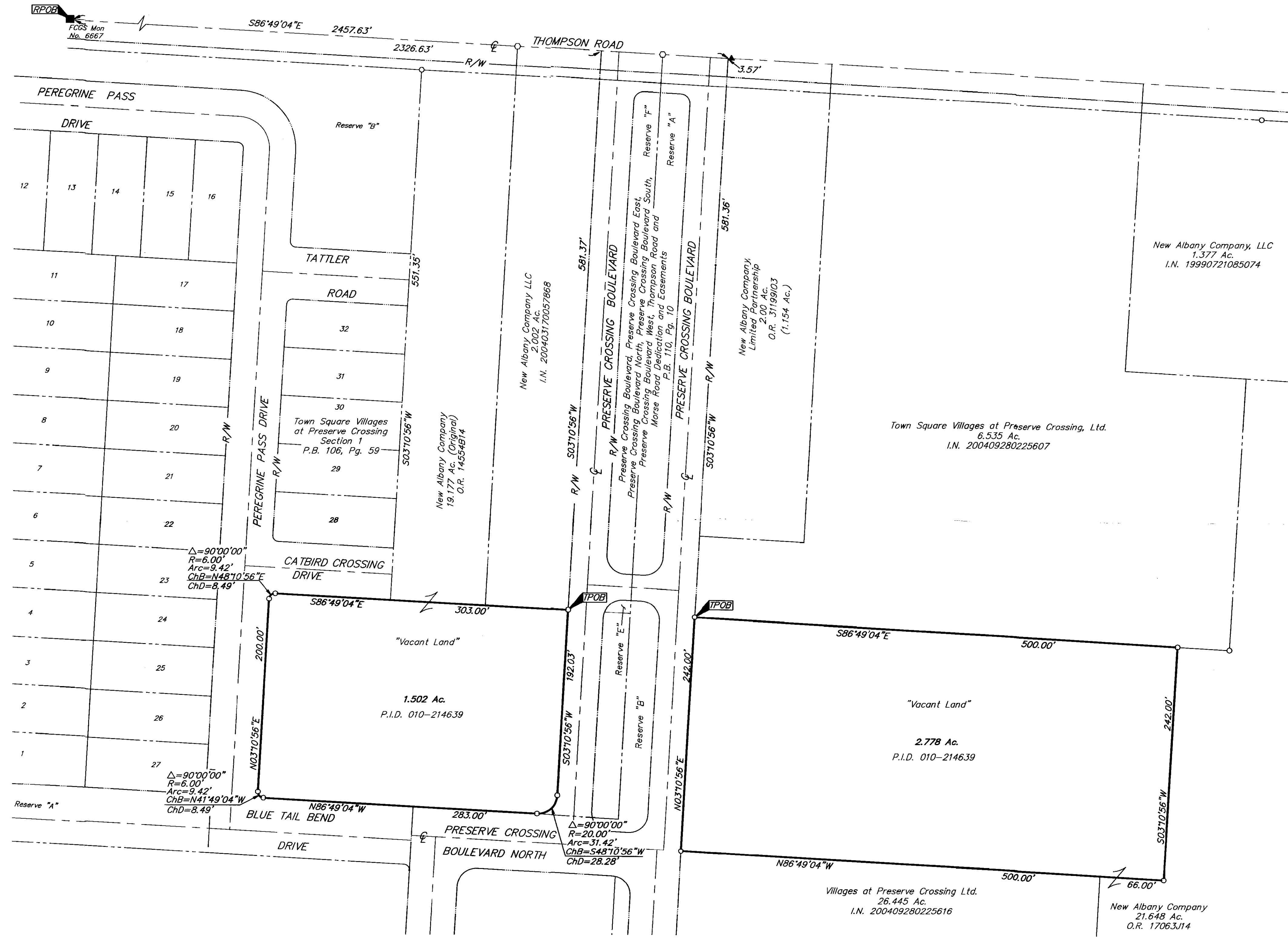


SURVEY OF ACREAGE PARCEL
QUARTER TOWNSHIP 3, TOWNSHIP 2, RANGE 16
UNITED STATES MILITARY LANDS
CITY OF COLUMBUS, FRANKLIN COUNTY, OHIO

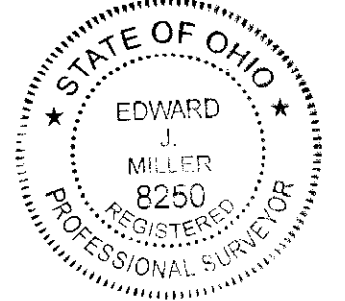


RECEIVED
 APR 11 2007
 Franklin County Engineer
 Columbus, Ohio

○ = STONE FND.
 ■ = MON. FND.
 ● = I.P. FND.
 ○ = I.P. SET
 ● = MAG. NAIL FND.
 ○ = MAG. NAIL SET
 ▲ = R.R. SPK. FND.
 △ = R.R. SPK. SET
 ★ = P.K. NAIL FND.
 I.P. Set are 13/16" I.D. iron pipe with cap inscribed EMHT INC

0 60 120
 GRAPHIC SCALE (IN FEET)

BASIS OF BEARINGS: Bearings are based on the Ohio State Plane Coordinate System as per NAD83. Control for bearings was from coordinates of FCGS 6666 & 6667, having a bearing of South $86^{\circ}56'02''$ East, established by the Franklin County Engineering Department, using Global Positioning System procedures and equipment.



By: *[Signature]*
 Professional Surveyor No. 8250

 ENGINEERS, SURVEYORS, PLANNERS, SCIENTISTS EVANS, MECHWART, HAMBLETON & TILTON, INC. 170 MILL STREET COLUMBUS, OHIO 43240 TELEPHONE: (614) 471-5150 FACSIMILE: (614) 471-9286		Date: April 6, 2007
		Scale: 1" = 60'
		Job No: 2007-0742
		Sheet: 1 of 1
REVISIONS		
MARK	DATE	DESCRIPTION