



Evans, Mechwart, Hambleton & Tilton, Inc.
 Engineers • Surveyors • Planners • Scientists
 5500 New Albany Road, Columbus, OH 43054
 Phone: 614.775.4500 Fax: 614.775.4800

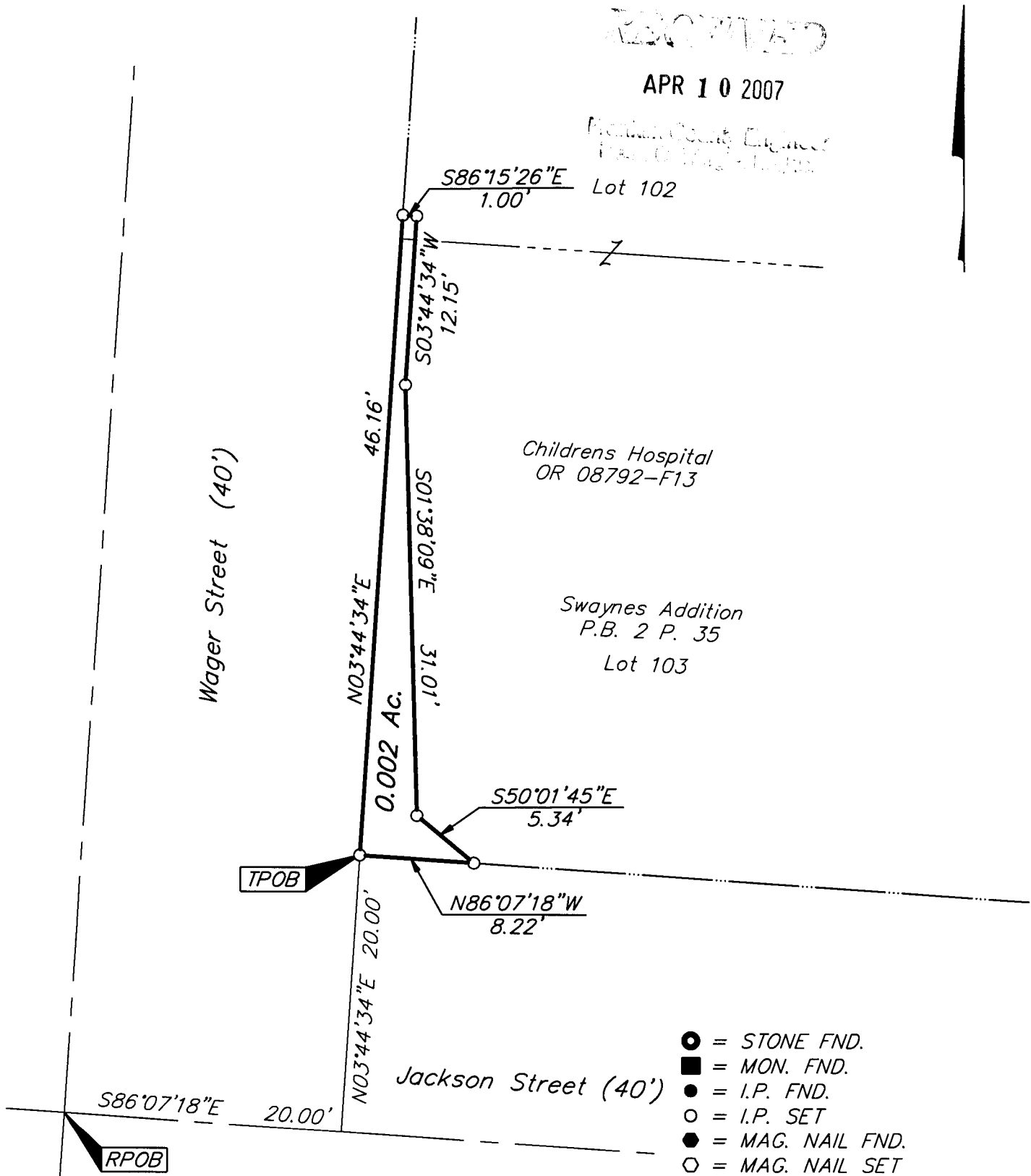
SURVEY OF ACREAGE PARCEL
SECTION 15, TOWNSHIP 5, RANGE 22
REFUGEE LANDS
 CITY OF COLUMBUS, FRANKLIN COUNTY, OHIO

Date: April 4, 2007

Job No. 2006-0258

Scale: 1" = 10'

\\CMHDATA1\SURVEY\PROJECT\20060258\DWG\60258BV5.DWG-LEGAL PORTRAIT> - NO XREFS - LAST SAVED BY JMASTON [4/5/2007 4:22:21 PM] - PLOTTED BY JMASTON [4/5/2007 4:22:24 PM]

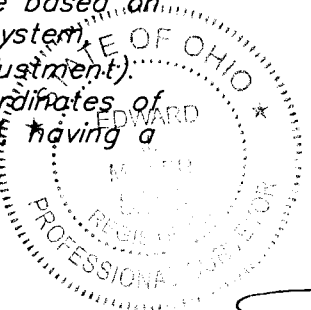


RECORDED
 APR 10 2007
 Franklin County Engineer
 Paul D. [unclear]

- = STONE FND.
- = MON. FND.
- = I.P. FND.
- = I.P. SET
- = MAG. NAIL FND.
- = MAG. NAIL SET
- ▲ = R.R. SPK. FND.
- △ = R.R. SPK. SET
- ◆ = P.K. NAIL FND.

BASIS OF BEARINGS: Bearings are based on the Ohio State Plane Coordinate System, South Zone, per NAD83 (1986 Adjustment). Control for bearings was from coordinates of monuments Frank 43 & Frank 14, having a bearing of South 87° 56' 16" East established by the Franklin County Engineering Department.

I.P. Set are 13/16" I.D. iron pipe with cap inscribed EMHT INC



GRAPHIC SCALE (IN FEET)

By 4/9/07
 Professional Surveyor No. 8250