

I-9-A

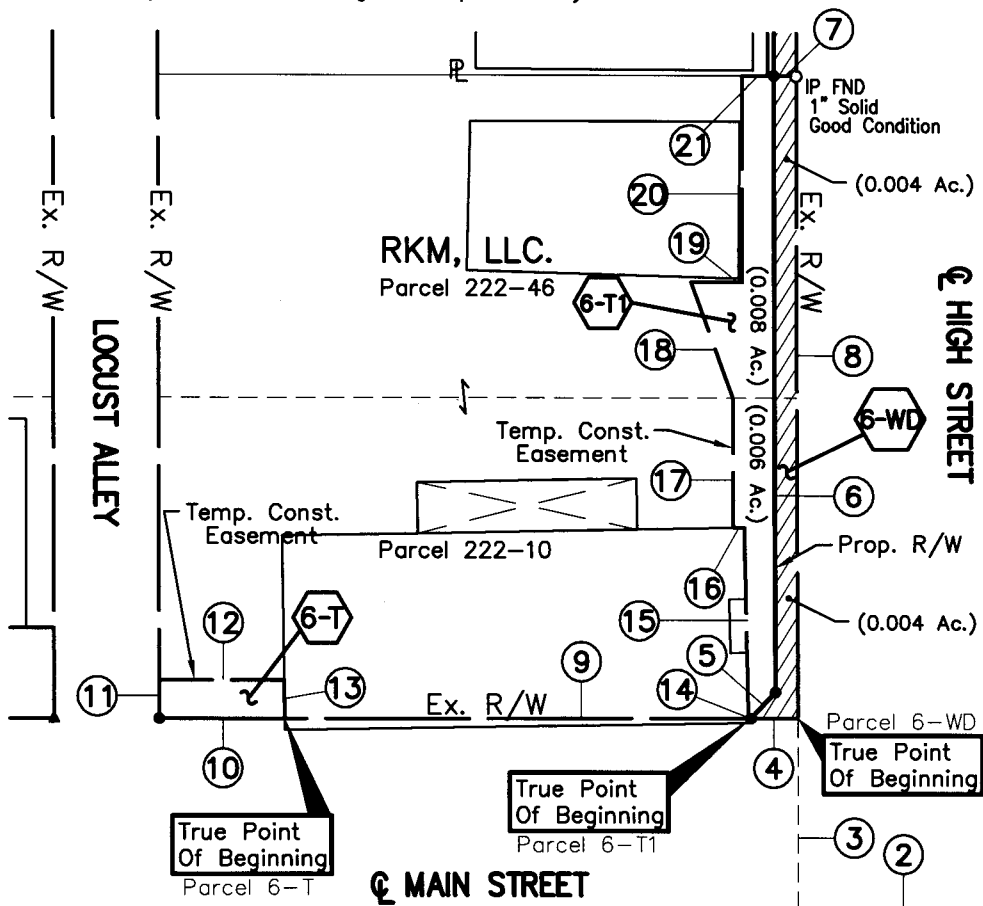
# E. P. FERRIS & ASSOCIATES, INC.

Consulting Civil Engineers and Surveyors  
880 King Avenue, Columbus Ohio, 43212

(PH) 614-299-2999  
(FX) 614-299-2992

## EXHIBIT "A", PARCELS 6-WD, 6-T, 6-T1 VILLAGE OF NEW ALBANY RKM, LLC. WARRANTY DEED TEMPORARY CONSTRUCTION EASEMENT

Situated in the State of Ohio, County of Franklin, Village of New Albany, and being part of Lot Numbers Thirteen (13) and Fourteen (14) in Village of New Albany, being of record in Plat Book 1, Page 364, as conveyed to RKM, LLC. by Instrument Number 200206100143754, all references refer to Recorder's Office, Franklin County, Ohio and being more particularly bounded and delineated as follows:



RECORDED  
APR 04 2007  
Franklin County Recorder  
Deborah J. Hines, Clerk

### AREA

Warranty Deed  
PARCEL 6-WD = 0.008 AC. (357.78 S.F.)

Temporary Construction Easement  
PARCEL 6-T = 0.003 AC. (117.26 S.F.)

Temporary Construction Easement  
PARCEL 6-T1 = 0.014 AC. (593.55 S.F.)

### REFERENCED DOCUMENTS:

Plat Book 1, Page 364  
I.N. 200206100143754

### Legend

- ▭ Property Line
- R/W Right-of-Way
- Iron Pin Found
- Iron Pin Set
- ▲ "Mag" Nail Set

All iron pins found were in good condition except as noted. All iron pins set are 5/8" Rebar, plastic capped with "E.P. FERRIS SURVEYOR 6027" inscribed on top.

### BASIS OF BEARING:

Bearings are the Ohio State Plane Coordinate System, South Zone, 1983 North American Datum, 1986 adjustment, as established by Franklin County, monuments FRANK 80 and 180. The bearing from Frank 80 to Frank 180 is N85°57'24"W.

LINE TABLE					
LINE	LENGTH	BEARING	LINE	LENGTH	BEARING
1	454.38'	N03°00'29"E	12	19.50'	S86°57'06"E
2	30.03'	N86°57'20"W	13	6.00'	S02°07'45"W
3	30.00'	N03°02'40"E	14	0.42'	N86°57'20"W
4	7.33'	N86°57'20"W	15	29.71'	N02°00'37"E
5	5.58'	N46°23'17"E	16	1.74'	N87°00'24"W
6	95.94'	N02°59'36"E	17	20.30'	N02°59'36"E
7	3.50'	S86°57'20"E	18	19.14'	N16°51'48"W
8	100.00'	S02°59'36"W	19	8.00'	S87°00'24"E
9	80.41'	N86°57'20"W	20	32.00'	N02°59'36"E
10	19.59'	N86°57'20"W	21	5.00'	S86°57'20"E
11	6.00'	N02°59'36"E			



Scale: 1" = 30'



BY: *[Signature]* 4-2007  
 Edward P. Ferris, P.E., P.S. Date  
 Registered Surveyor No. 6027

DRWN BY CDM CHK BY EPF DATE 04-02-07