

SURVEY PLAT

SITUATED IN THE STATE OF OHIO, COUNTY OF FRANKLIN, BROWN & NORWICH TOWNSHIP, V.M.S. 6635,
AND BEING PART OF A 166.071 ACRE TRACT IN THE NAME OF BERTHA M. & JAMES R. KUHLWEIN AS
DESCRIBED IN OFFICIAL RECORD 31419 PG. 1-17, RECORDER'S OFFICE, FRANKLIN COUNTY, OHIO

PRIOR DEED REFERENCES,
BERTHA M. GRANTING TO
JAMES R. KUHLWEIN

O.R. 31419 PG. 1-17	2.8%
O.R. 31030 PG. G-03	2.8%
O.R. 22037 PG. E-05	3.2%
O.R. 21898 PG. D-13	3.2%
O.R. 16503 PG. D-08	3.2%
O.R. 16336 PG. G-11	3.2%
O.R. 13586 PG. B-19	3.2%
O.R. 13586 PG. B-09	3.2%
<hr/>	
TOTAL	=24.8%

TOTAL = 24.8%

120-000220
BERTHA M. (75.2%)(81.6% Auditor)
& JAMES R. (24.8%)(18.4% Auditor)
KUHLWEIN
166.071 AC. (DEED)
O.R. 31419 PG. 1-17

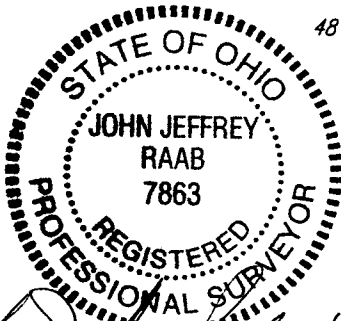
PARCEL #120-000220
BERTHA M. (75.2%)(81.6% Auditor) &
JAMES R. (24.8%)(18.4% Auditor)
KUHLWEIN
O.R. 31419 PG. 1-17
166.071 AC. (DEED)
148.791 AC. TRACT (AUDITOR)(BROWN TWP.)
& 19.12 AC. TRACT (AUDITOR)(NORWICH TWP.)

32.258 AC. SPLIT
26.562 AC. (SURVEYED) BROWN TWP.
5.696 ACRES (SURVEYED) NORWICH TWP.

PARCEL #120-000205
PAUL M. & LEONA M SPANNER
28.846 ACRES
O.R. 05294 PG. J11

CERTIFICATION

I HEREBY CERTIFY THIS PLAT WAS MADE BY USING FIELD
MEASUREMENTS OBTAINED BY AN ACTUAL FIELD SURVEY
CONDUCTED IN FEBRUARY, 2007.

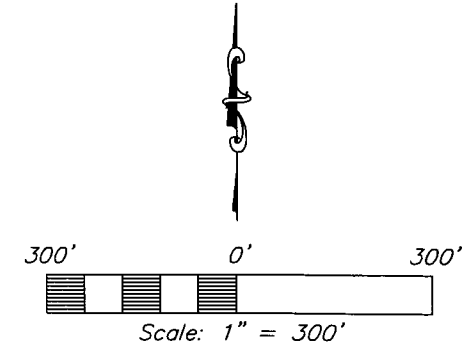
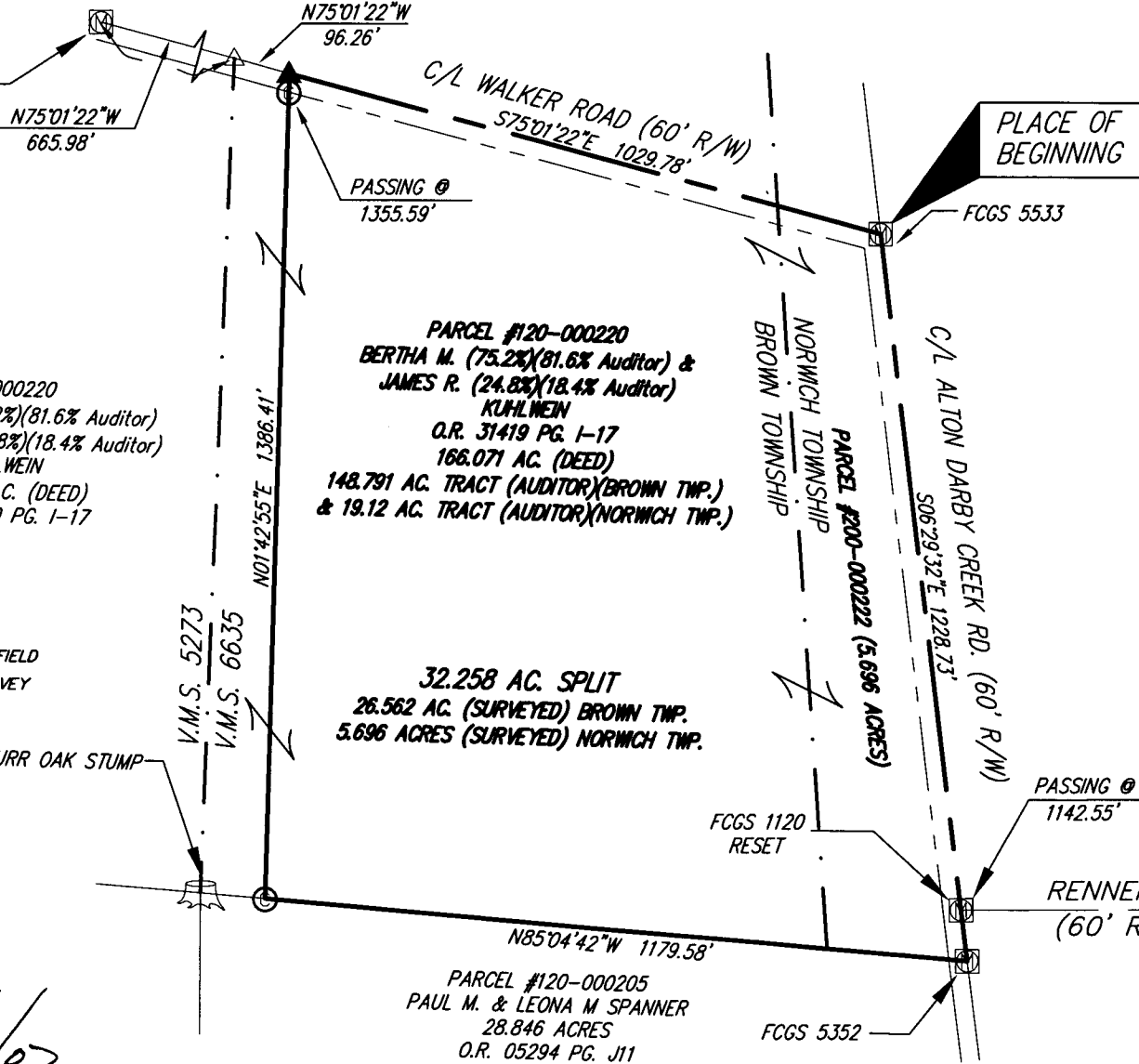


JOHN J. RAAB, OHIO PROFESSIONAL SURVEYOR NO. 7863

48" BURR OAK STUMP

V.M.S. 5273
V.M.S. 6635

N01°42'55"E 1386.41'

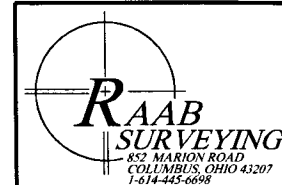


BASIS OF BEARINGS

THE BASIS OF BEARINGS FOR THIS SURVEY IS THE
CENTERLINE OF WALKER ROAD (N75°01'22"W) AS
STATED ON THE FRANKLIN COUNTY ENGINEER
CENTERLINE SURVEY PLAT OF WALKER ROAD OF
RECORD AT THE FRANKLIN COUNTY ENGINEERS OFFICE

LEGEND

- ⊙ 3/4" IRON PIPE SET W/CAP STAMPED "RAAB P.S. 7863"
- ▲ RAILROAD SPIKE SET
- △ RAILROAD SPIKE FOUND
- ⊠ MONUMENT BOX FOUND



DRAWN BY: J.T.B.
DATE: 02/21/07
DWG. NO.:
APPROVED BY: J.J.R.

B-8-B