



Evans, Mechwart, Hambleton & Tilton, Inc.
 Engineers • Surveyors • Planners • Scientists
 5500 New Albany Road, Columbus, OH 43054
 Phone: 614.775.4500 Fax: 614.775.4800

RECEIVED

APR 02 2007

Franklin County Engineer
 Dept. of Public Works

SURVEY OF ACREAGE PARCEL
QUARTER TOWNSHIP 3, TOWNSHIP 2, RANGE 16
UNITED STATES MILITARY LANDS
VILLAGE OF NEW ALBANY, FRANKLIN COUNTY, OHIO

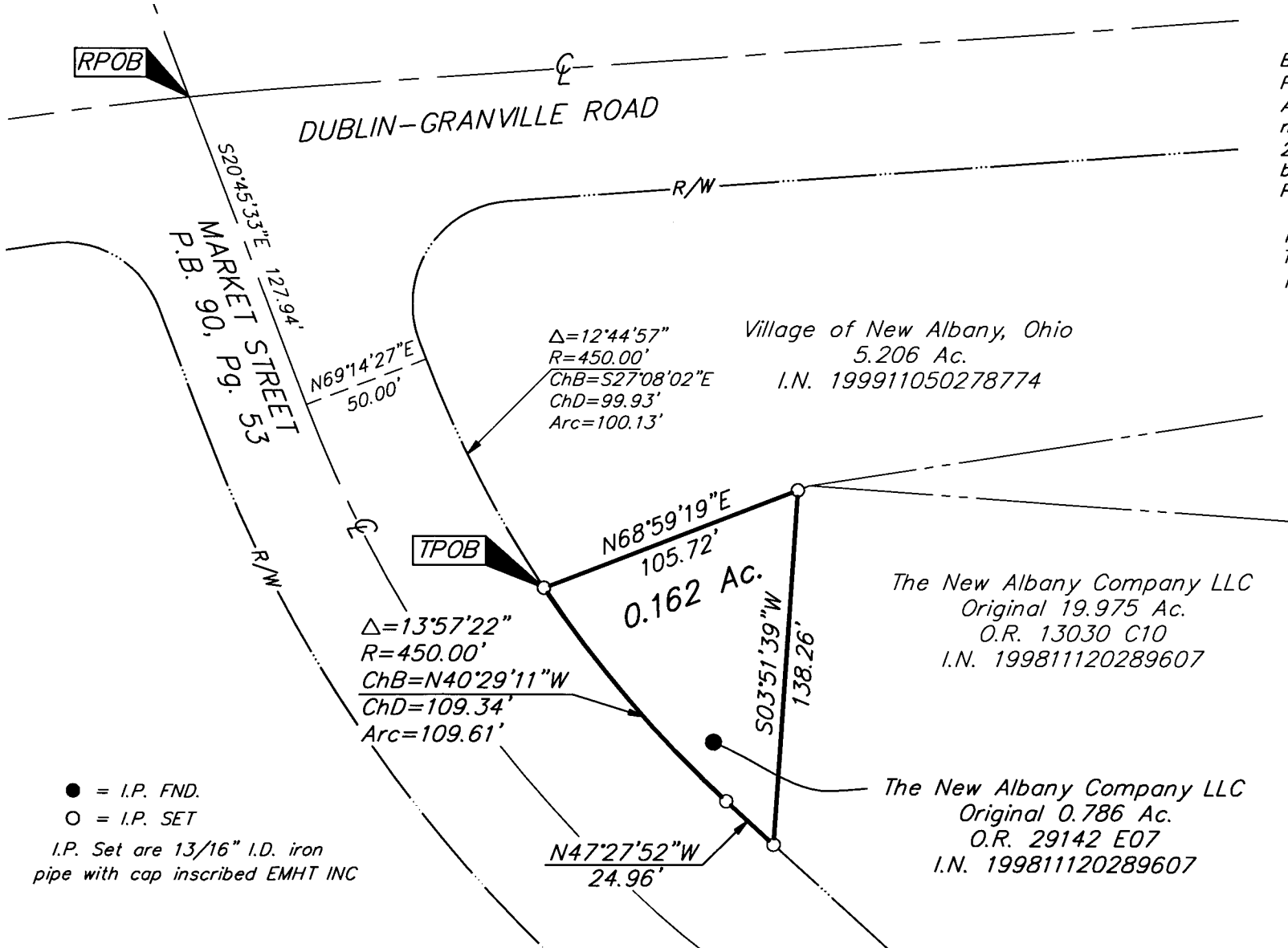
Date: March 29, 2007

Scale: 1" = 60'

Job No: 2007-0687

M C M X X V I

I:\CADD\TAI\SURVEY\PROJECT\20070687\DWG\70687BVI.DWG (20687BVI) - J. KRETS: 5575185, 1051091, 56677912 - LAST SAVED BY: THEBB [1/29/2007 7:35:40 AM] - PLOTTED BY: THEBB [1/29/2007 7:35:40 AM]



BASIS OF BEARINGS: Bearings are based on the Ohio State Plane Coordinate System, South Zone as per NAD83 (1986 Adjustment). Control for bearings was from coordinates of monuments FRANK 78 & FRANK 178, with a bearing of North 20° 45' 33" West for a portion of Market Street, established by the Franklin County Engineering Department, using Global Positioning System procedures and equipment.

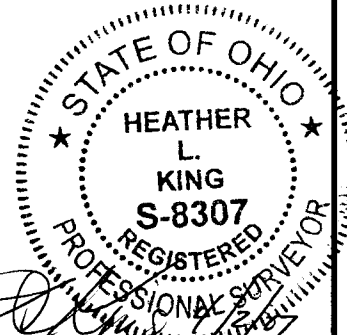
Note:
 This survey was prepared using documents of record, prior plats of survey, and observable field evidence.



GRAPHIC SCALE
(IN FEET)

- = I.P. FND.
- = I.P. SET

I.P. Set are 13/16" I.D. iron pipe with cap inscribed EMHT INC



By *Heather L. King*
 Professional Surveyor No. 8307