



Evans, Mechwart, Hambleton & Tilton, Inc.
 Engineers • Surveyors • Planners • Scientists
 5500 New Albany Road, Columbus, OH 43054
 Phone: 614.775.4500 Fax: 614.775.4800

RECEIVED SURVEY OF ACREAGE PARCEL
 QUARTER TOWNSHIP 3, TOWNSHIP 2, RANGE 16
 UNITED STATES MILITARY LANDS
 VILLAGE OF NEW ALBANY, FRANKLIN COUNTY, OHIO

APR 02 2007

Franklin County Engineer
 Dean O. Ring, P.E., P.S.

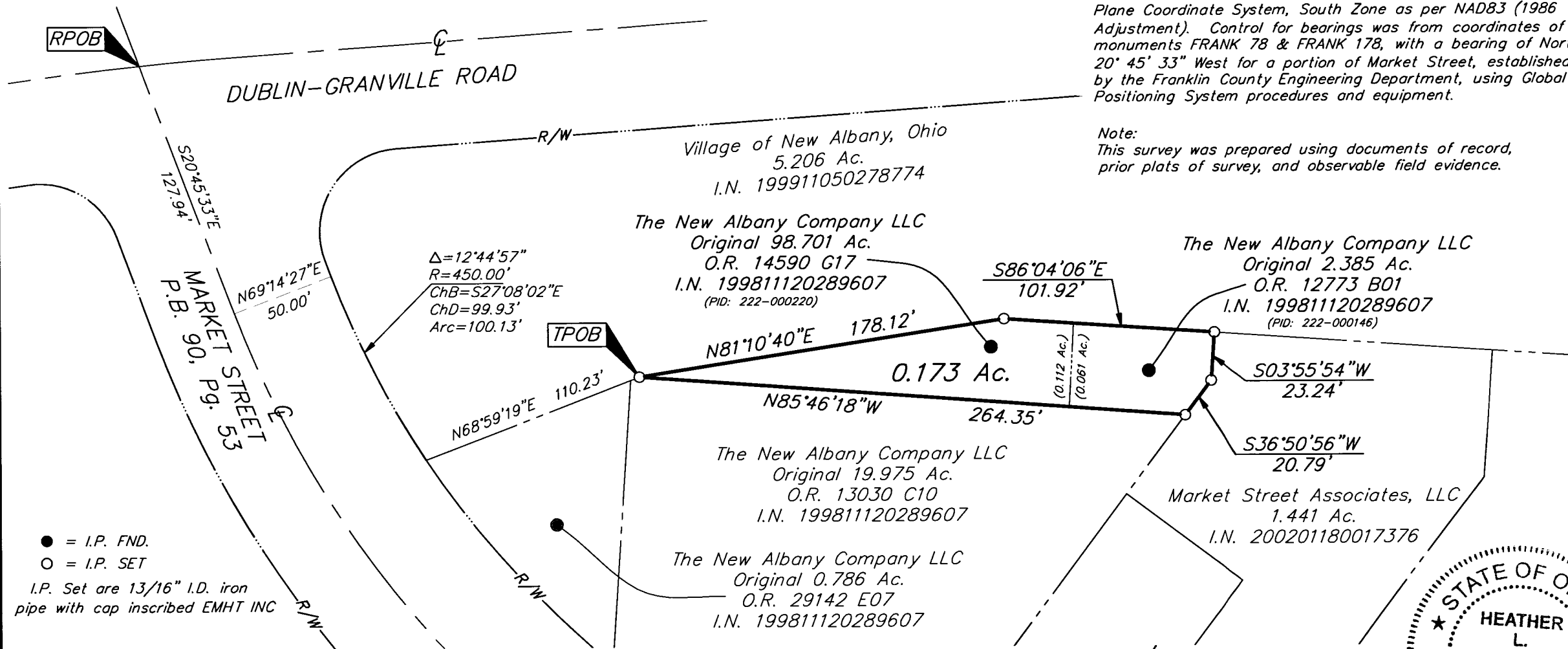
Date: March 29, 2007

Scale: 1" = 60'

Job No: 2007-0687

BASIS OF BEARINGS: Bearings are based on the Ohio State Plane Coordinate System, South Zone as per NAD83 (1986 Adjustment). Control for bearings was from coordinates of monuments FRANK 78 & FRANK 178, with a bearing of North 20° 45' 33" West for a portion of Market Street, established by the Franklin County Engineering Department, using Global Positioning System procedures and equipment.

Note:
 This survey was prepared using documents of record, prior plats of survey, and observable field evidence.

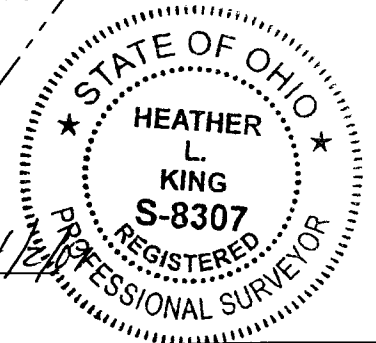


● = I.P. FND.
 ○ = I.P. SET
 I.P. Set are 13/16" I.D. iron pipe with cap inscribed EMHT INC



GRAPHIC SCALE (IN FEET)

By *Heather L. King*
 Professional Surveyor No. 8307



I:\CH\04\141\SURVEY\PROJECT\20070687\DWG\70687bv4.DWG-LEGAL LANDS - NO XREFS - LAST SAVED BY HKING [4/2/2007 10:43:14 AM] - PLOTTED BY HKING [4/2/2007 10:43:15 AM]