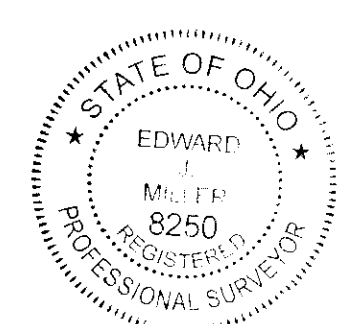
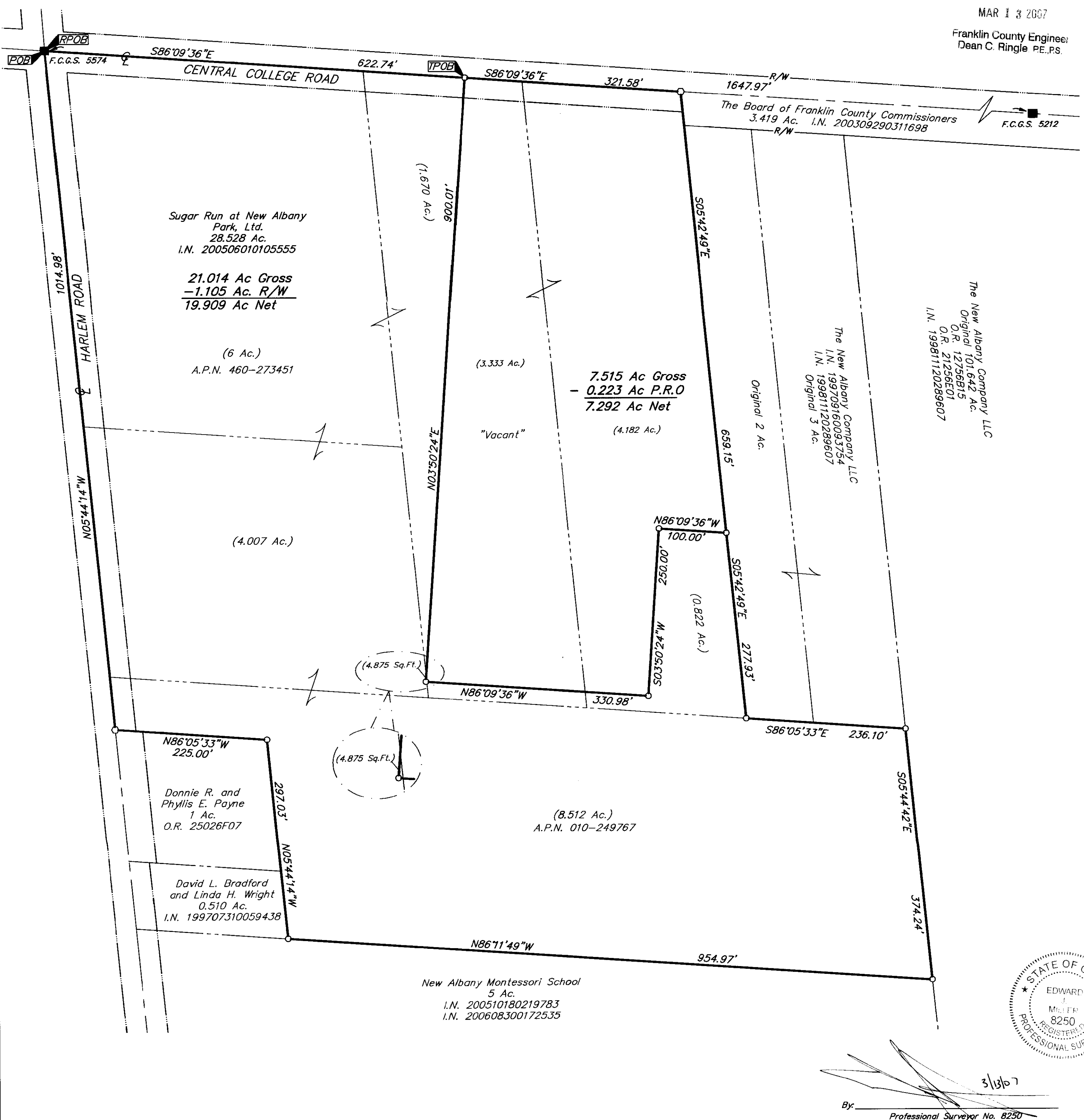


**SURVEY OF ACREAGE PARCELS**  
**SECTION 14, QUARTER TOWNSHIP 2, TOWNSHIP 2, RANGE 16**  
**UNITED STATES MILITARY LANDS**  
**CITY OF COLUMBUS, FRANKLIN COUNTY, OHIO**

**RECEIVED**

MAR 13 2007

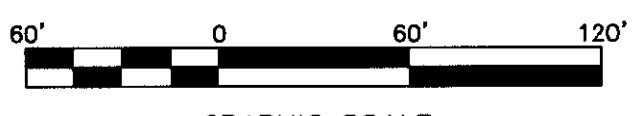
Franklin County Engineer  
 Dean C. Ringle PE, PS.



By: *[Signature]*  
 Professional Surveyor No. 8250

- = STONE FND.
- = MON. FND.
- = I.P. FND.
- = I.P. SET
- = MAG. NAIL FND.
- = MAG. NAIL SET
- ▲ = R.R. SPK. FND.
- △ = R.R. SPK. SET
- = P.K. NAIL FND.

I.P. Set are 13/16" I.D. iron pipe with cap inscribed EMHT INC



GRAPHIC SCALE  
(IN FEET)

**BASIS OF BEARINGS:** Bearings are based on the Ohio State Plane Coordinate System as per NAD83 (1986 adjustment). Control for bearings was from coordinates of monuments Frank 5574 & Frank 5113, with a portion of Central College Road having a bearing of South 86° 09' 36" East, established by the Franklin County Engineering Department, using Global Positioning System procedures and equipment.

<b>EMHT</b> Evans, Mechtart, Hambleton & Tilton, Inc. Engineers • Surveyors • Planners • Scientists 5500 New Albany Road, Columbus, OH 43054 Phone: 614.775.4500 Fax: 614.775.4800 M C M X X V I	Date: February 26, 2007	
	Scale: 1" = 60'	
	Job No: 2007-0425	
	Sheet: 1 of 1	
<b>REVISIONS</b>		
MARK	DATE	DESCRIPTION

I:\CADD\DATA\1\SURVEY\PROJECT\20070425\DWG\70425BV.DWG<18X24> - PLOTTED BY TBAXTER [2/26/2007 1:47:18 PM] - NO XREFS - LAST SAVED BY TBAXTER [2/26/2007 1:46:52 PM] - PLOTTED BY TBAXTER [2/26/2007 1:47:18 PM]