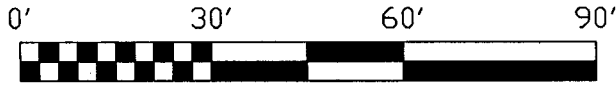


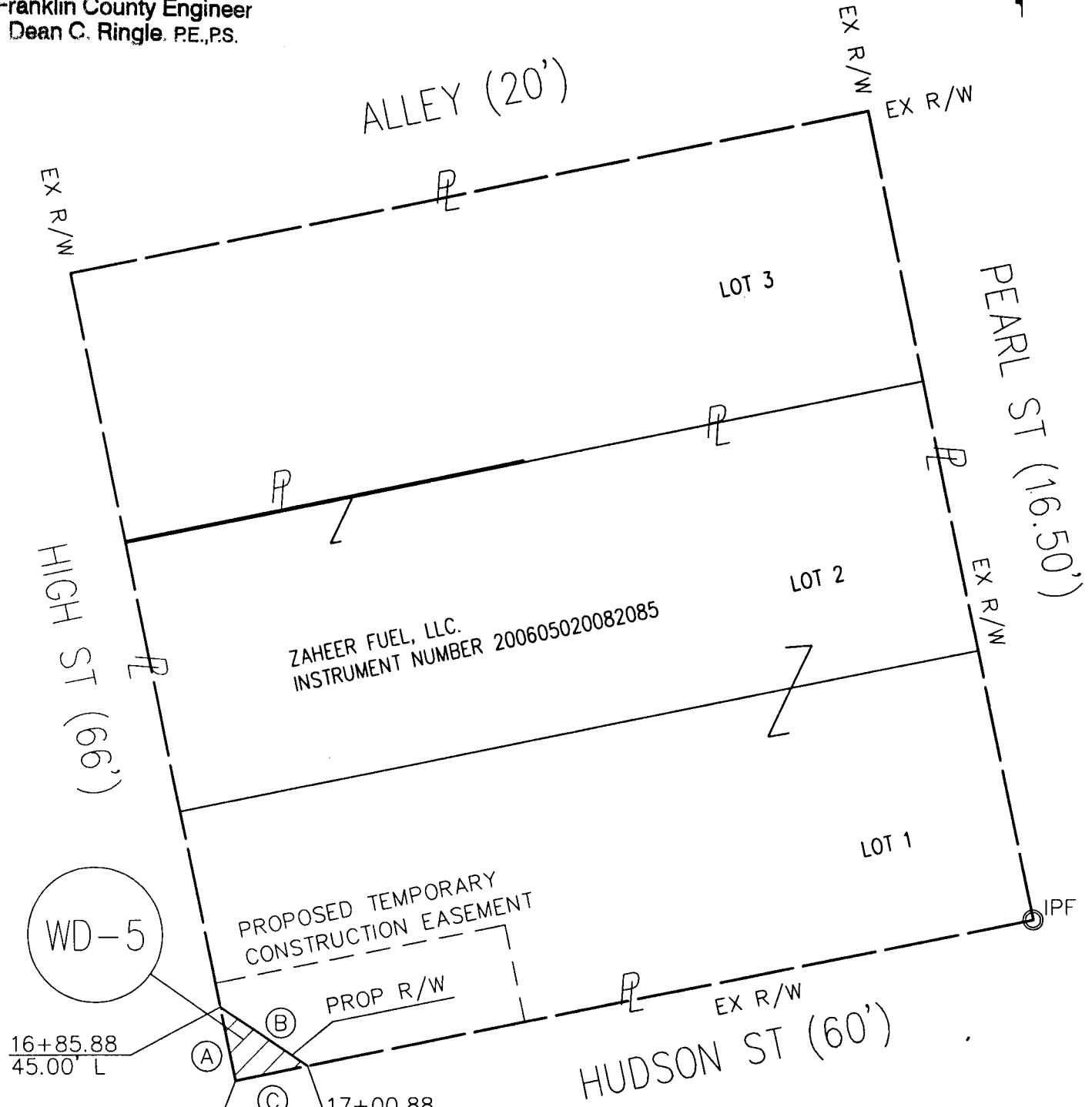
EXHIBIT A



RECEIVED

MAR 21 2007

Franklin County Engineer
Dean C. Ringle, P.E., P.S.



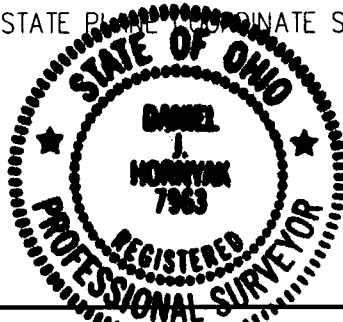
POB 16+85.88 / 30.00' L
16+85.88 / 45.00' L
17+00.88 / 30.00' L

- (A) N 11°12'18" W 15.00'
- (B) S 56°12'18" E 21.21'
- (C) S 78°47'42" W 15.00'

BASIS OF BEARING WAS THE CENTERLINE OF HUDSON STREET AS BEING S 78°47'42" W, AND WAS TRANSFERRED FROM A GPS SURVEY OF FRANKLIN COUNTY GEODETIC SURVEY MONUMENTS WEDIEHL AND GRANDVIEW, AND WAS BASED ON THE STATE PLANE COORDINATE SYSTEM NAD 83, SOUTH ZONE, OHIO.

I HEREBY CERTIFY THAT THIS PLAT IS BASED ON AN ACTUAL FIELD SURVEY PERFORMED BY COLUMBUS ENGINEERING CONSULTANTS IN 1998.

Daniel J. Hornyak 1-9-07
DANIEL J. HORNYAK P.S. No 7963 DATE



COLUMBUS ENGINEERING CONSULTANTS, INC.

Consulting Civil Engineers
840 Michigan Avenue
Columbus, OH 43215
TEL (614) 228-3500 FAX (614) 228-3519