

## SURVEY OF ACREAGE PARCEL SECTION 8, TOWNSHIP 5, RANGE 22 REFUGEE LANDS CITY OF COLUMBUS, FRANKLIN COUNTY, OHIO

Date: February 8, 2007

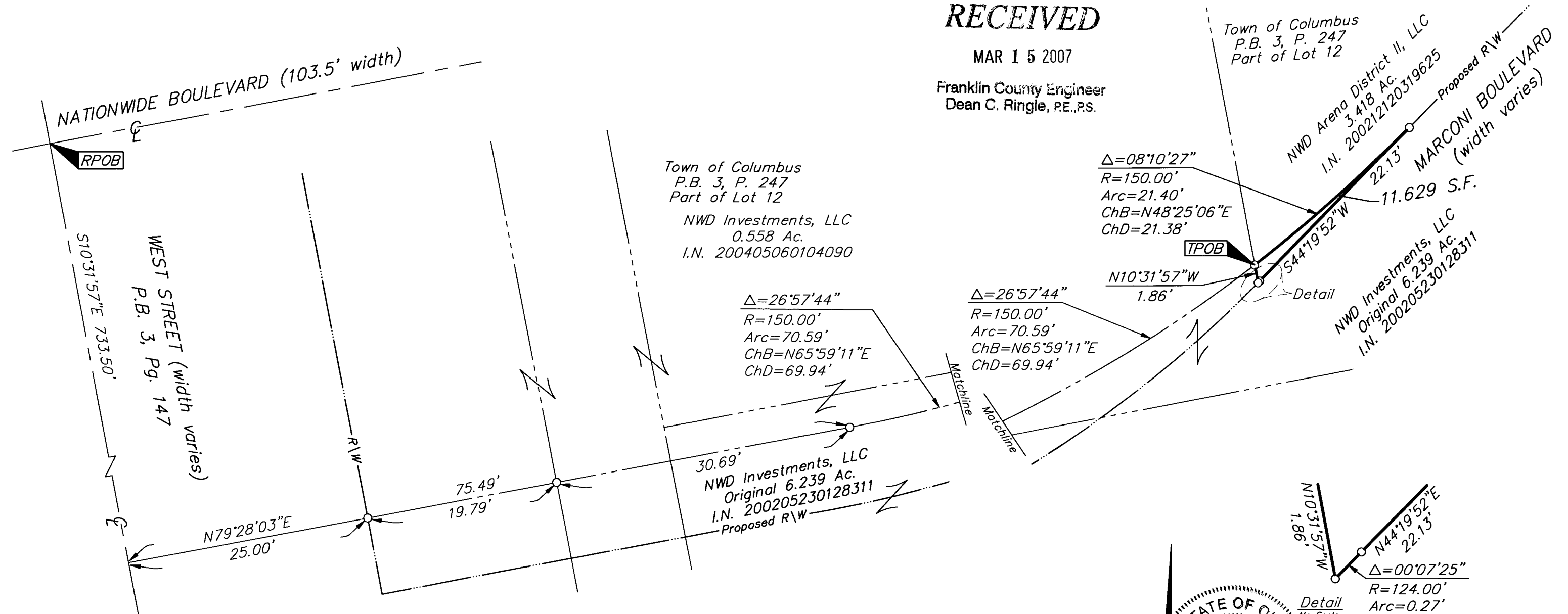
Scale: 1" = 10'

Job No: 2007-0250

### RECEIVED

MAR 15 2007

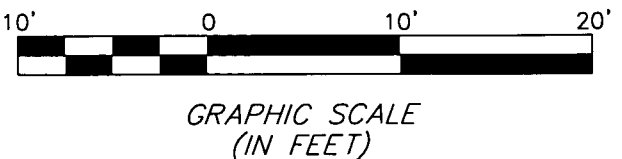
Franklin County Engineer  
 Dean C. Ringle, PE, PS.



- = STONE FND.
- = MON. FND.
- = I.P. FND.
- = I.P. SET
- = MAG. NAIL FND.
- = MAG. NAIL SET
- ▲ = R.R. SPK. FND.
- △ = R.R. SPK. SET
- ◆ = P.K. NAIL FND.

I.P. Set are 13/16" I.D. iron pipe with cap inscribed EMHT INC

**BASIS OF BEARINGS:**  
 The bearings shown heron are based on the north line of Maple Street being South 89° 08' 05" East as per Governor's Deed to the City of Columbus, Official Record 30337 104, Recorder's Office Franklin County, Ohio.



STATE OF OHIO  
 EDWARD J. MILLER  
 8250  
 REGISTERED PROFESSIONAL SURVEYOR

3/15/07

By \_\_\_\_\_  
 Professional Surveyor No. 8250

I:\CMHDATA\1\SURVEY\PROJECT\20070250\DWG\70250bv3.DWG - LAST SAVED BY JMASON [3/15/2007 12:25:44 PM] - PLOTTED BY JMASON [3/15/2007 1:48:40 PM]