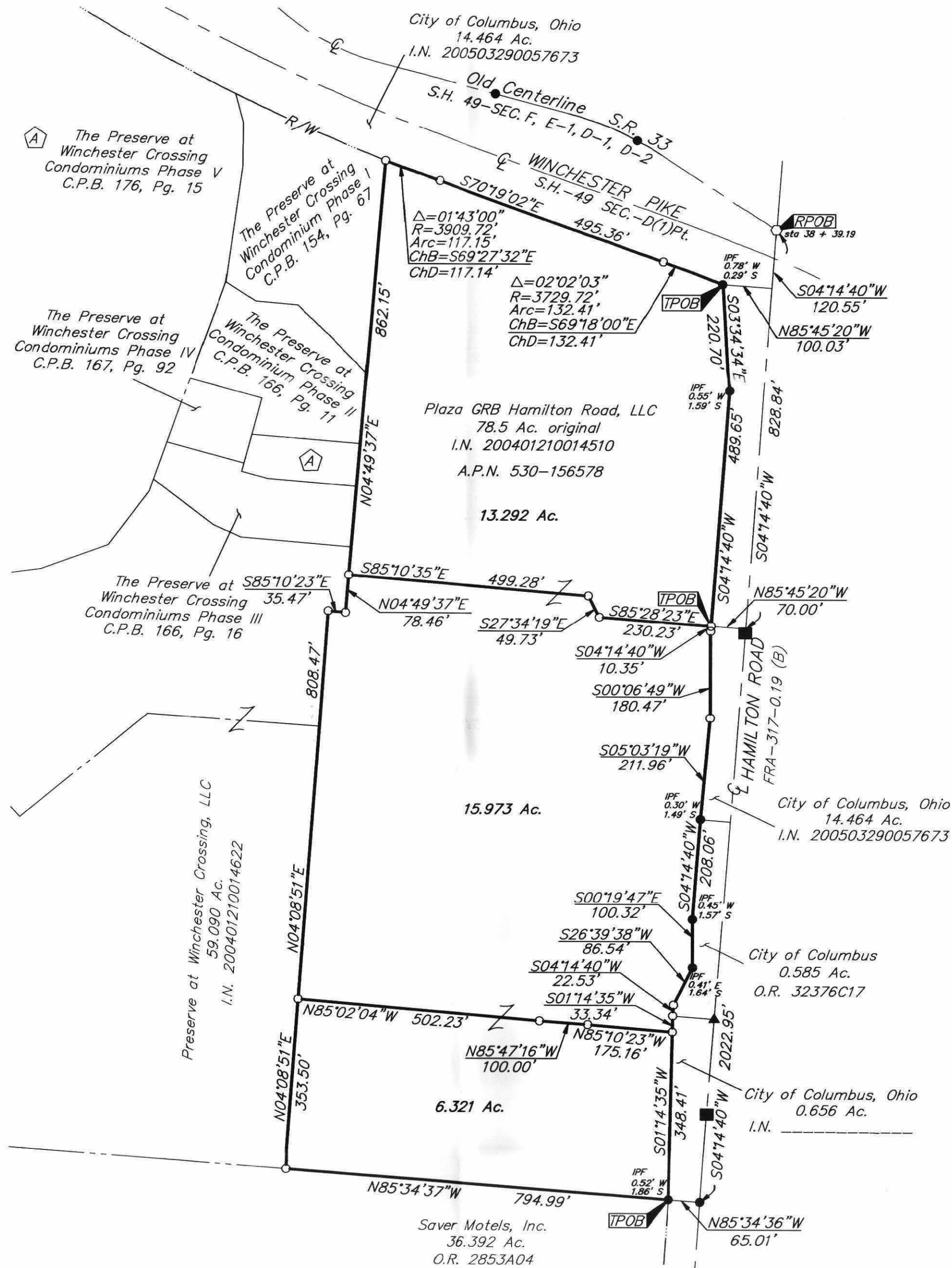
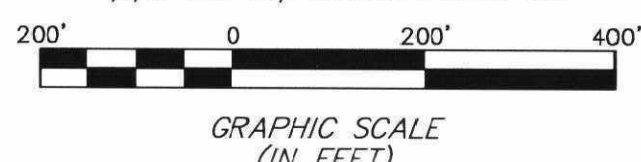


SURVEY OF ACREAGE PARCEL SECTION 9, TOWNSHIP 11, RANGE 21 CONGRESS LANDS CITY OF COLUMBUS, FRANKLIN COUNTY, OHIO

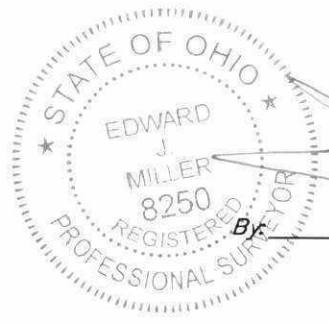


I:\CMHDATA1\SURVEY\PROJECT\20070392\DWG\70392BVDWG<18X24 PORTRAIT> - NO XREFS - LAST SAVED BY JMASTON [3/13/2007 10:50:27 AM] - PLOTTED BY JMASTON [3/13/2007 10:50:33 AM]

- = STONE FND.
 - = MON. FND.
 - = I.P. FND.
 - = I.P. SET
 - = MAG. NAIL FND.
 - = MAG. NAIL SET
 - ▲ = R.R. SPK. FND.
 - △ = R.R. SPK. SET
 - = P.K. NAIL FND.
- I.P. Set are 13/16" I.D. iron pipe with cap inscribed EMHT INC



BASIS OF BEARINGS: Bearings are based on North 57°12'05" West, between monuments FRANK 132 and 32, per the Ohio State Plane Coordinate System NAD83, South Zone (1986 adjustment).



3/13/07
Professional Surveyor No. 8250

RECEIVED
MAR 13 2007
Franklin County Engineer
Dean C. Ringle, PE., P.S.

EMHT Evans, Mechwart, Hambleton & Tilton, Inc. Engineers • Surveyors • Planners • Scientists 5500 New Albany Road, Columbus, OH 43054 Phone: 614.775.4500 Fax: 614.775.4800	Date: March 5, 2007
	Scale: 1" = 200'
	Job No: 2007-0392
	Sheet: 1 of 1
REVISIONS	
M C M X X V I	
MARK	DATE
DESCRIPTION	