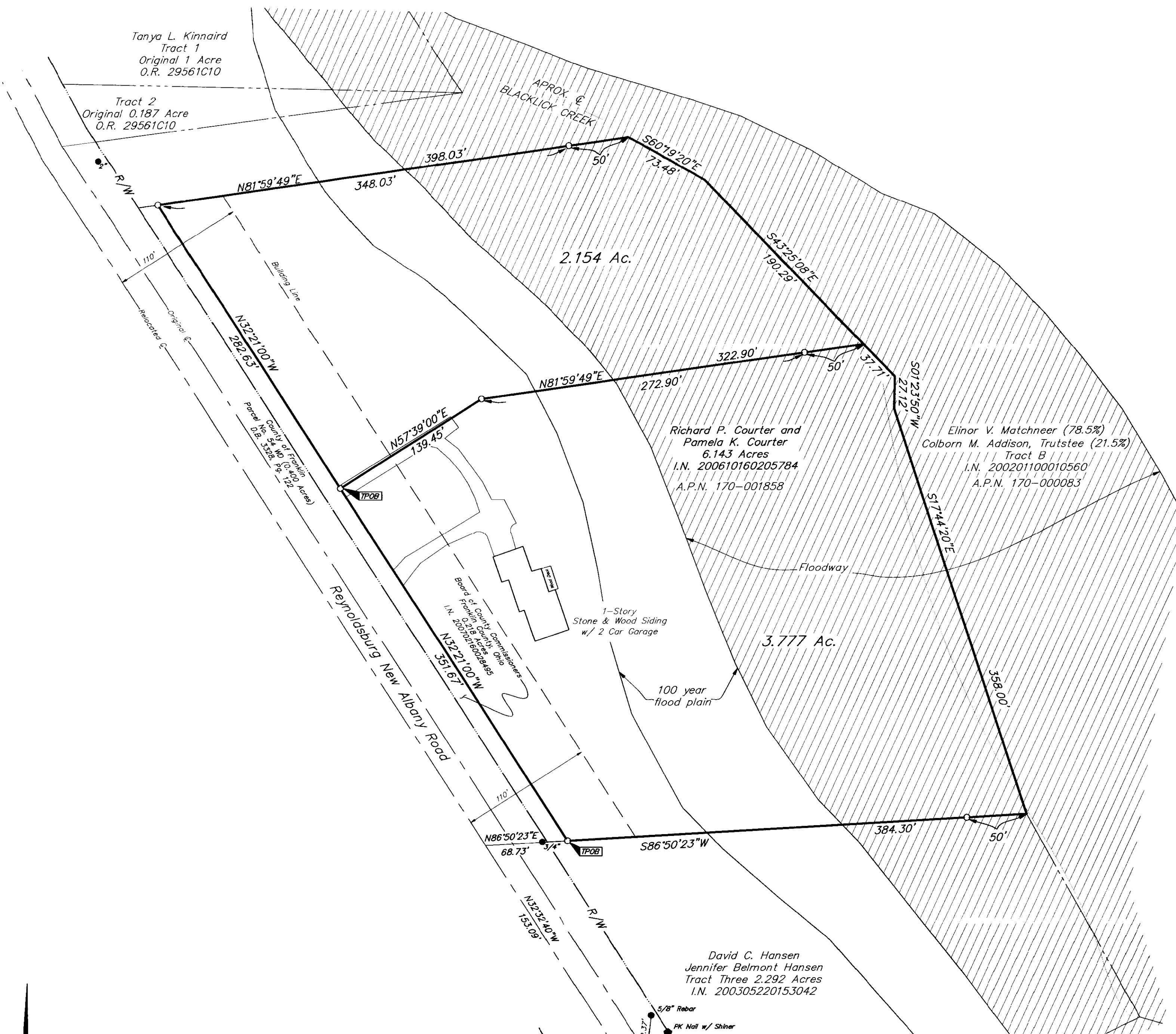


SURVEY OF ACREAGE PARCEL

LOT 1, QUARTER TOWNSHIP 4, TOWNSHIP 1, RANGE 16

UNITED STATES MILITARY DISTRICT

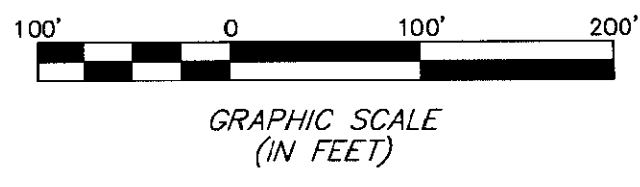
TOWNSHIP OF JEFFERSON, FRANKLIN COUNTY, OHIO



BASIS OF BEARINGS: Bearings are based on the Ohio State Plane Coordinate System, South Zone per NAD83 (1986 adjustment). Control for bearings was from coordinates of monuments FCGS 5521 & FCGS 2214, having a bearing of South 03° 49' 41" West, for the centerline of Reynoldsburg-New Albany Road, established by the Franklin County Engineering Department.

$\Delta = 2'47.50''$
 $R = 2864.79'$
 $Arc = 139.87'$
 $ChB = N31'00'46''W$
 $ChD = 139.85'$

- = STONE FND.
 - = MON. FND.
 - = I.P. FND.
 - = I.P. SET
 - = MAG. NAIL FND.
 - = MAG. NAIL SET
 - ▲ = R.R. SPK. FND.
 - △ = R.R. SPK. SET
 - = P.K. NAIL FND.
- I.P. Set are 1 3/16" I.D. iron pipe with cap inscribed EMHT INC



By: _____
Professional Surveyor No. 8250

RECEIVED
Franklin County Engineer
Dean D. Hinkle, P.E.

EMHT Evans, Mechwart, Hambleton & Tilton, Inc. Engineers • Surveyors • Planners • Scientists 5500 New Albany Road, Columbus, OH 43054 Phone: 614.775.4500 Fax: 614.775.4800		Date: August 22, 2006
		Scale: 1" = 60'
		Job No: 2007-0447
		Sheet: 1 of 1
REVISIONS		
MARK	DATE	DESCRIPTION

I:\CHG\241\SURVEY\PROJ\20070447\DWG\70447BV2.DWG (18/24) PLOT BY: MRSISSLER [3/2/2007 12:36:16 PM] - LAST SAVED BY: MRSISSLER [3/2/2007 12:36:16 PM] - PLOTTED BY: MRSISSLER [3/2/2007 12:36:17 PM]