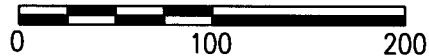


SURVEY DATA:

HORIZONTAL DATUM - BEARINGS BASED UPON THE OHIO STATE PLANE COORDINATE SYSTEM, SOUTH ZONE, NAD83 (CORS). SAID BEARINGS ORIGINATED FROM SAID COORDINATE SYSTEM BY GPS OBSERVATIONS AND OBSERVATIONS OF SELECTED STATIONS IN THE NATIONAL GEODETIC SURVEY CONTINUOUSLY OPERATING REFERENCE STATION (NGS CORS) NETWORK. THE BEARING FROM CORS STATION COLB TO CORS STATION OHUN, BEING NORTH FORTY-ONE DEGREES ONE MINUTE FIFTY-SEVEN SECONDS WEST (N41°01'57"W) IS DESIGNATED THE "BASIS OF BEARING" FOR THIS SURVEY.

SCALE: 1"=100'



RECEIVED

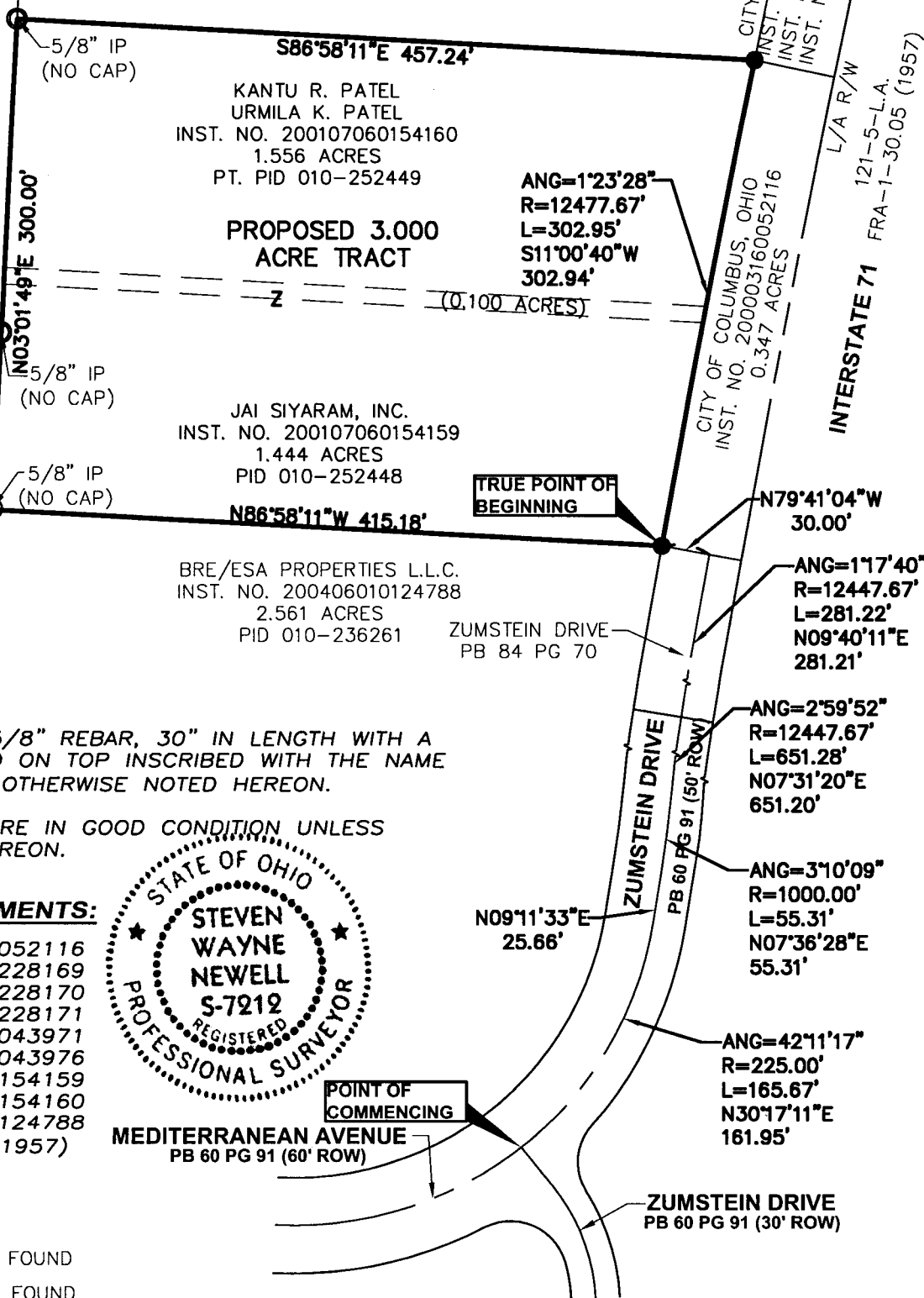
MAR 15 2007

Franklin County Engineer
Dean C. Ringle, P.E., P.S.

CHAMPION COLUMBUS REALTY, LLC
INST. NO. 200011090228169 (1/2 INT.)
INST. NO. 200011090228170 (1/4 INT.)
INST. NO. 200011090228171 (1/4 INT.)
2.143 ACRES
PID 010-255630

CONTINENT VILLAGE LLC
INST. NO. 200103050043976
16.437 ACRES
PID 010-256846

CONTINENT COMMERCIAL 1 LLC
INST. NO. 200103050043971
10.499 ACRES
PID 010-256848



SURVEY NOTES:

IRON PINS SET ARE 5/8" REBAR, 30" IN LENGTH WITH A PLASTIC PLUG PLACED ON TOP INSCRIBED WITH THE NAME "WOOLPERT", UNLESS OTHERWISE NOTED HEREON.

MONUMENTS FOUND ARE IN GOOD CONDITION UNLESS OTHERWISE NOTED HEREON.

REFERENCE DOCUMENTS:

- INST. NO. 200003160052116
- INST. NO. 200011090228169
- INST. NO. 200011090228170
- INST. NO. 200011090228171
- INST. NO. 200103050043971
- INST. NO. 200103050043976
- INST. NO. 200107060154159
- INST. NO. 200107060154160
- INST. NO. 200406010124788
- ODOT FRA-1-30.05 (1957)
- P.B. 60 PG. 91
- P.B. 84 PG. 70



MEDITERRANEAN AVENUE
PB 60 PG 91 (60' ROW)

POINT OF COMMENCING

TRUE POINT OF BEGINNING

- ⊗ PK NAIL FOUND
- ⊙ IRON PIN FOUND
- IRON PIN SET WITH ID CAP

CERTIFICATION:

THIS DRAWING BASED ON A SURVEY PERFORMED BY WOOLPERT, INC. ON JANUARY 17, 2007.

WOOLPERT, INC.

STEVEN W. NEWELL DATE 03/14/07
OHIO REGISTERED PROFESSIONAL SURVEYOR NO. 7212

SURVEY EXHIBIT
PROPOSED LOT CONSOLIDATION
ZUMSTEIN DRIVE
1/4 TOWNSHIP 4, TOWNSHIP 2 NORTH, RANGE 18 WEST, USML
CITY OF COLUMBUS, FRANKLIN COUNTY, OHIO



WOOLPERT

2760 AIRPORT DRIVE
SUITE 140
COLUMBUS, OHIO 43219
PHONE: 614.476.6000
FAX: 614.476.6225

DES TMC PROJECT
DRT TMC NO. 66503
CKD SWN DATE 02/22/2007
SHEET 1 OF 1