

EMH&T
 Evans, Mechwart, Hambleton & Tilton, Inc.
 Engineers • Surveyors • Planners • Scientists
 5500 New Albany Road, Columbus, OH 43054
 Phone: 614.775.4500 Fax: 614.775.4800

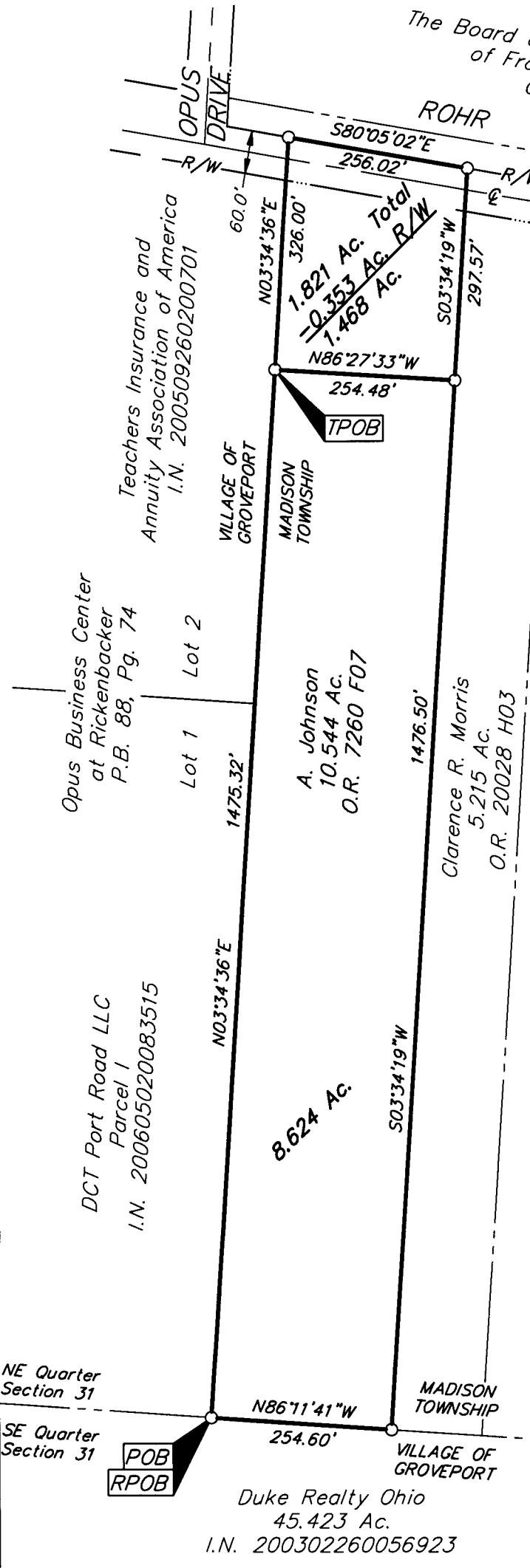
SURVEY OF ACREAGE PARCEL
SECTION 31 TOWNSHIP 11, RANGE 21
CONGRESS LANDS

MADISON TOWNSHIP AND VILLAGE OF GROVEPORT, FRANKLIN COUNTY, OHIO

Date: March 09, 2007

Job No. 2006-2241

Scale: 1" = 200'



- = STONE FND.
- = MON. FND.
- = I.P. FND.
- = I.P. SET
- = MAG. NAIL FND.
- = MAG. NAIL SET
- ▲ = R.R. SPK. FND.
- △ = R.R. SPK. SET
- ◆ = P.K. NAIL FND.

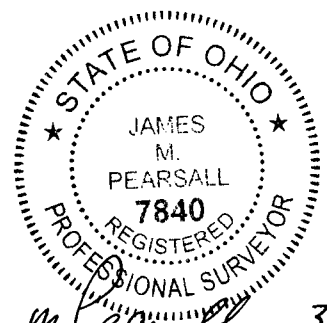
I.P. Set are 13/16" I.D. iron pipe with cap inscribed EMHT INC

BASIS OF BEARINGS:
 The bearings shown are based on the Ohio State Plane Coordinate System, South Zone, as per NAD 83 (1986 adjustment). Control for the bearings was from coordinates of Monuments "Hamilton" and "Hamilton Azimuth" established by the Franklin County Engineering Department, using Global Positioning System procedures and equipment, and establishes the bearing of the east right-of-way line of Opus Drive as North 03°39'34" East.

RECEIVED

MAR 09 2007

Franklin County Engineer
 Dean C. Ringle, P.E., P.S.



By *James M. Pearsall* 3/9/07
 Professional Surveyor No. 7840



GRAPHIC SCALE (IN FEET)

\\CMHDATA1\SURVEY\PROJECT\20062241\DWG\62241B\1.DWG<LEGAL PORTRAIT> - NO XREFS - LAST SAVED BY JMEYER [3/9/2007 1:48:30 PM] - PLOTTED BY PSINGLETON [3/9/2007 2:06:13 PM]