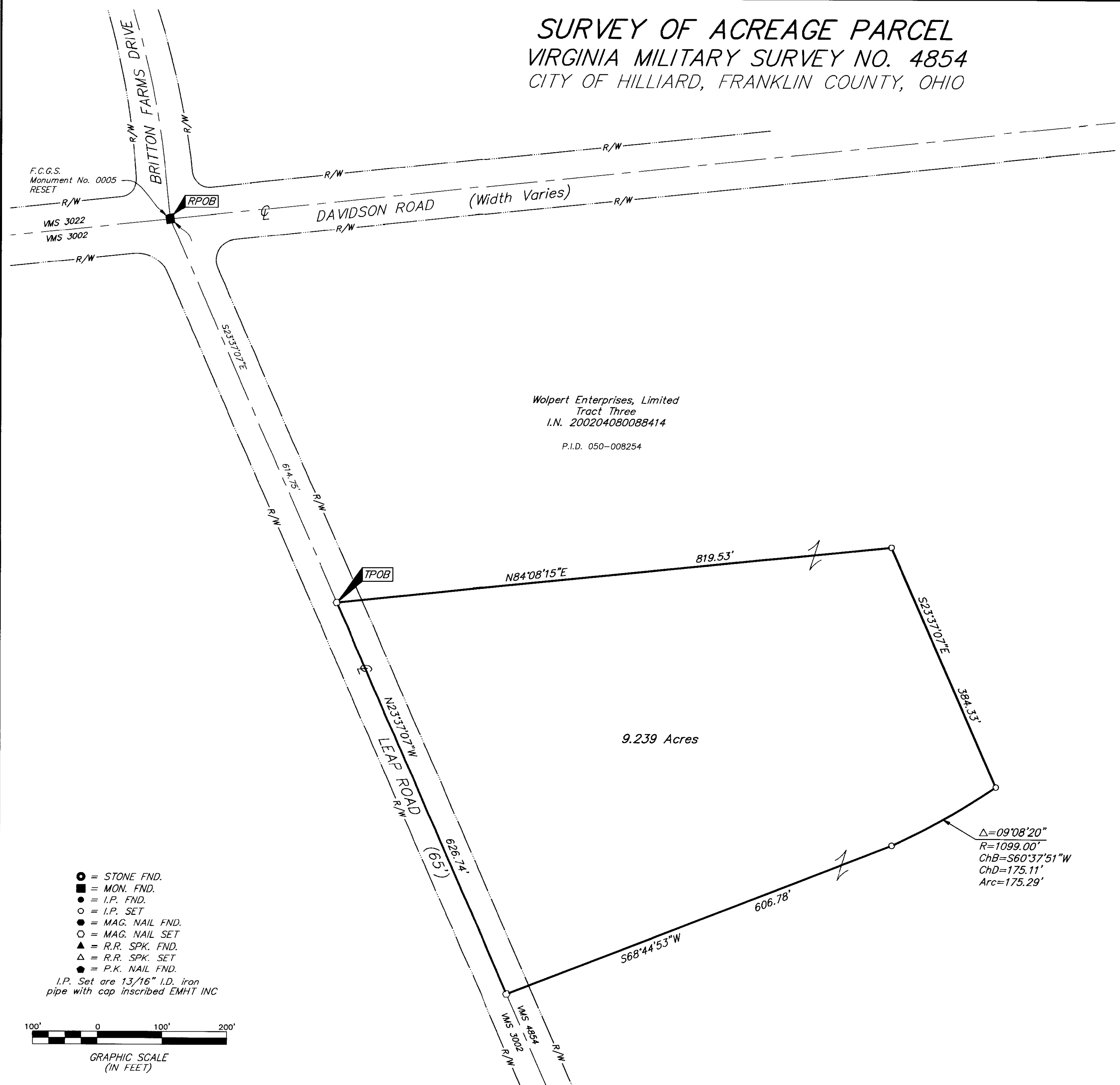


SURVEY OF ACREAGE PARCEL

VIRGINIA MILITARY SURVEY NO. 4854

CITY OF HILLIARD, FRANKLIN COUNTY, OHIO



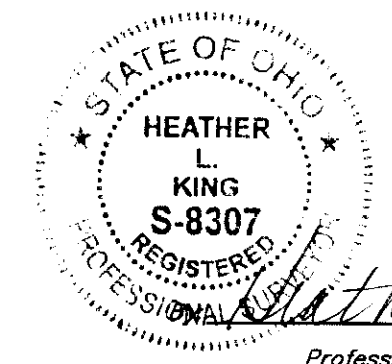
Wolpert Enterprises, Limited
Tract Three
I.N. 200204080088414
P.I.D. 050-008254

BASIS OF BEARINGS:
Bearings are based on the Ohio State Plane Coordinate System, South Zone, as per NAD83 (1986 Adjustment). Control for bearings was from coordinates of monuments FCGS 0005 RESET and FCGS 0006, having a bearing of North 23° 37' 07" West, established by the Franklin County Engineering Department, using Global Positioning System procedures and equipment.

NOTE:
This survey was prepared from existing records and an actual field survey performed in December, 2006.

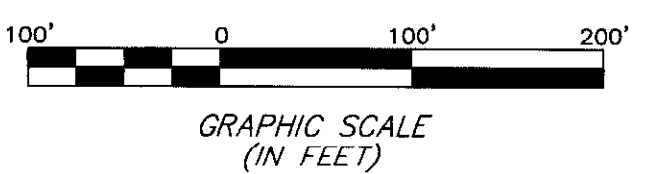
RECEIVED
Franklin County Engineer
Dean C. Ringle, P.E., P.S.

RECEIVED
Franklin County Engineer
Dean C. Ringle, P.E., P.S.



Heather L. King 1/19/07
Professional Surveyor No. 8307

- = STONE FND.
 - = MON. FND.
 - = I.P. FND.
 - = I.P. SET
 - = MAG. NAIL FND.
 - = MAG. NAIL SET
 - ▲ = R.R. SPK. FND.
 - △ = R.R. SPK. SET
 - = P.K. NAIL FND.
- I.P. Set are 13/16" I.D. iron pipe with cap inscribed EMHT INC



EMHT		Date: January 19, 2007	
Evans, Mechwart, Hambleton & Tilton, Inc. Engineers • Surveyors • Planners • Scientists 5500 New Albany Road, Columbus, OH 43254 Phone: 614.775.4500 Fax: 614.775.4800		Scale: 1" = 50'	
M C M X X V I		Job No: 2006-2116	
		Sheet: 1 of 1	
REVISIONS			
MARK	DATE	DESCRIPTION	

\\CMHDATA\1\SURVEY\PROJECT\20062116\DWG\62116BV3.DWG<18X24 LANDSCAPE> - NO XREFS - LAST SAVED BY HKING [1/19/2007 11:34:12 AM] - PLOTTED BY HKING [1/19/2007 11:34:12 AM]