

## SURVEY OF ACREAGE PARCEL

### QUARTER TOWNSHIP 4, TOWNSHIP 1, RANGE 16

### UNITED STATES MILITARY LANDS

### CITY OF COLUMBUS, FRANKLIN COUNTY, OHIO

Date: May 19, 2004

Scale: 1" = 200'

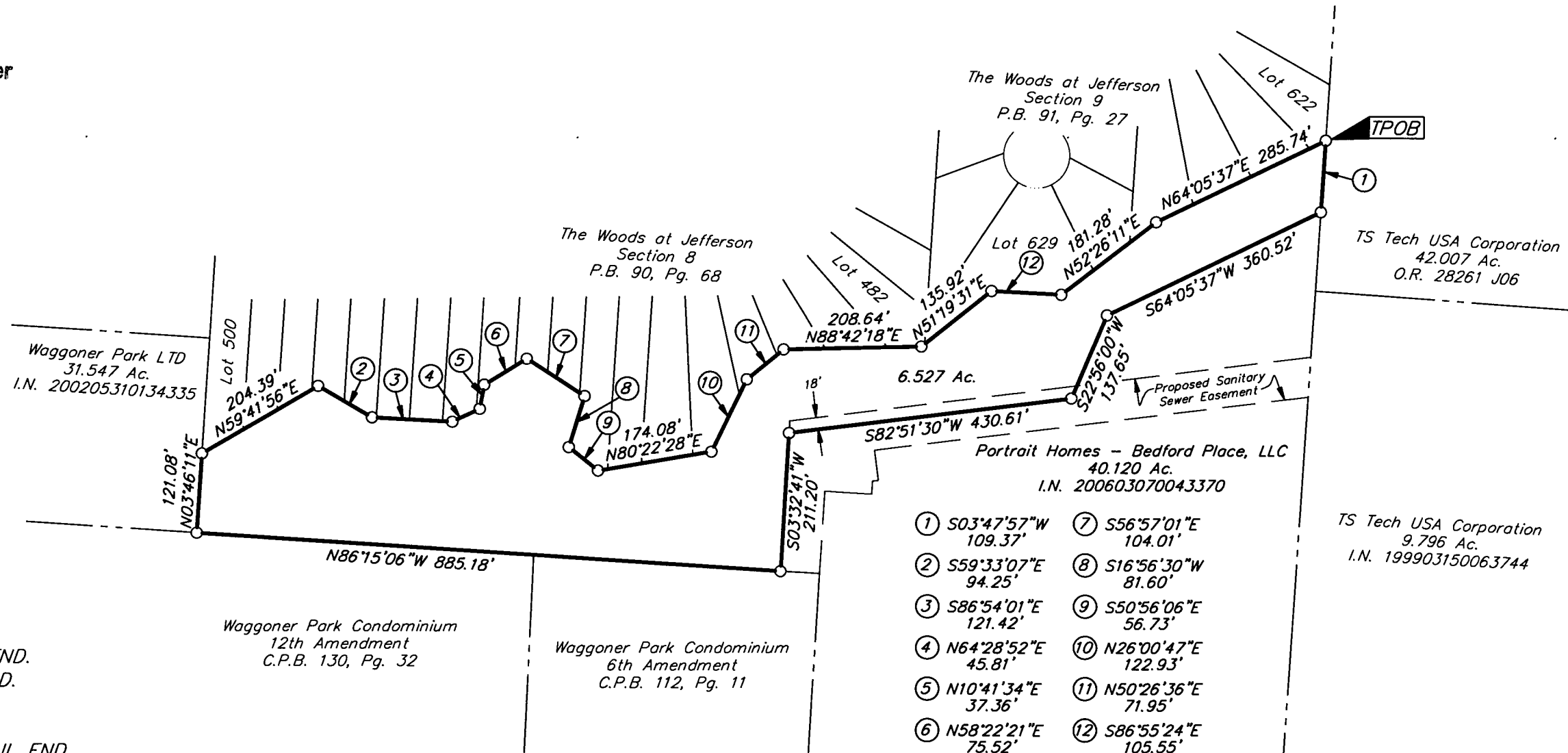
Job No: 2005-2354

# RECEIVED

JAN 30 2007

Franklin County Engineer  
 Dean C. Ringle, PE., PS.

J-9-C



- = STONE FND.
- = MON. FND.
- = I.P. FND.
- = I.P. SET
- = MAG. NAIL FND.
- = MAG. NAIL SET
- ▲ = R.R. SPK. FND.
- △ = R.R. SPK. SET
- ◆ = P.K. NAIL FND.

I.P. Set are 13/16" I.D. iron pipe with cap inscribed EMHT INC


① S03°47'57"W 109.37'	⑦ S56°57'01"E 104.01'
② S59°33'07"E 94.25'	⑧ S16°56'30"W 81.60'
③ S86°54'01"E 121.42'	⑨ S50°56'06"E 56.73'
④ N64°28'52"E 45.81'	⑩ N26°00'47"E 122.93'
⑤ N10°41'34"E 37.36'	⑪ N50°26'36"E 71.95'
⑥ N58°22'21"E 75.52'	⑫ S86°55'24"E 105.55'



GRAPHIC SCALE  
(IN FEET)

**BASIS OF BEARINGS:**  
 Bearings are based on North 82° 05' 45" East for a portion of the centerline of East Broad Street (State Route 16). Control for bearings was derived from the Ohio State Plane Coordinate System, NAD83 (1986 adjustment) coordinates of monuments Frank 48 & Frank 148, as established by the Franklin County Engineering Department using Global Positioning System procedures and equipment.



By   
 Professional Surveyor No. 8250