



Evans, Mechwart, Hambleton & Tilton, Inc.
 Engineers • Surveyors • Planners • Scientists
 5500 New Albany Road, Columbus, OH 43054
 Phone: 614.775.4500 Fax: 614.775.4800

SURVEY OF ACREAGE PARCEL
QUARTER TOWNSHIP 2, TOWNSHIP 1, RANGE 16
UNITED STATES MILITARY LANDS
CITY OF GAHANNA, FRANKLIN COUNTY, OHIO

M C M X X V I

Date: January 22, 2007

Job No. 2007-0001

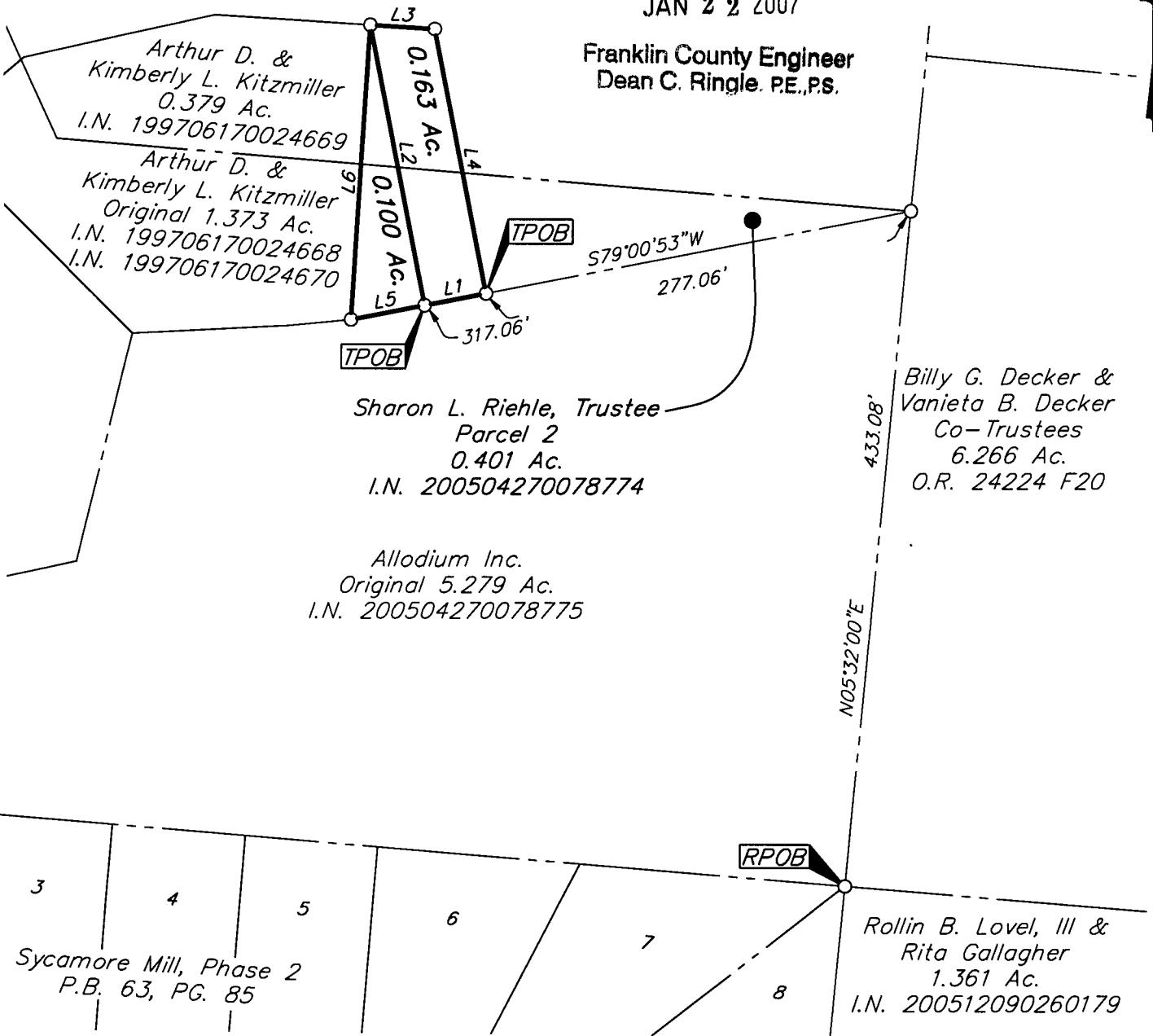
Scale: 1" = 100'

Sharon L. Riehle, Trustee
 Original 3.877 Ac.
 O.R. 27720 H07

RECEIVED

JAN 22 2007

Franklin County Engineer
 Dean C. Ringle, P.E., P.S.



\\CMHDATA1\SURVEY\PROJECT\20070001\DWG\70001BV.DWG<LEGAL PORTRAIT> - NO XREFS - LAST SAVED BY JMEYER [1/22/2007 8:55:47 AM] - PLOTTED BY JMEYER [1/22/2007 8:55:48 AM]

Sharon L. Riehle, Trustee
 Parcel 2
 0.401 Ac.
 I.N. 200504270078774

Allodium Inc.
 Original 5.279 Ac.
 I.N. 200504270078775

Billy G. Decker &
 Vanieta B. Decker
 Co-Trustees
 6.266 Ac.
 O.R. 24224 F20

433.08'

N05°32'00"E

3 4 5 6 7 8
 Sycamore Mill, Phase 2
 P.B. 63, PG. 85

Rollin B. Lovel, III &
 Rita Gallagher
 1.361 Ac.
 I.N. 200512090260179

LINE TABLE		
LINE	BEARING	DISTANCE
L1	S79°00'53"W	40.00'
L2	N11°05'45"W	182.36'
L3	S86°20'30"E	41.36'
L4	S11°05'45"E	171.90'
L5	S79°00'53"W	48.00'
L6	N03°39'30"E	188.48'

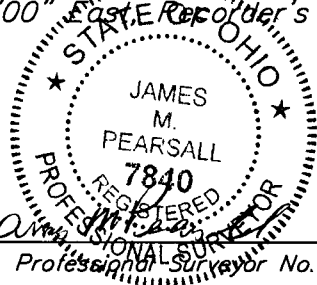
- = STONE FND.
- = MON. FND.
- = I.P. FND.
- = I.P. SET
- = MAG. NAIL FND.
- = MAG. NAIL SET
- ▲ = R.R. SPK. FND.
- △ = R.R. SPK. SET
- ◆ = P.K. NAIL FND.

I.P. Set are 13/16" I.D. iron pipe with cap inscribed EMHT INC

BASIS OF BEARINGS: The bearings shown hereon are based on the same meridian as the bearings of that 25.00 acre tract as conveyed to Irene E. Riehle by deed of record in Official Record 32350 B09, in which the centerline of Hamilton Road (Beacham Road) has a bearing of North 4°25'00" East.



GRAPHIC SCALE
 (IN FEET)



By *James M. Pearsall* 1/22/07
 Professional Surveyor No. 7840