



ms consultants, inc.

engineers, architects & planners

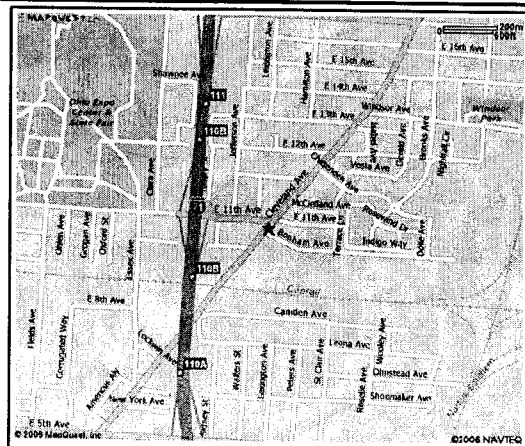
2221 Schrock Road
Columbus, Ohio 43229-547
www.msconsultants.com

F-9-A

Phone (614) 898-7100

Fax (614) 898-7570

Situated in the State of Ohio, County of Franklin, City of Columbus, Township 1, Range 18, United States Military Lands, being a 66 square foot area out of that Lot No. 159 as delineated on the plat of "Abram Dow's Amended Plat of A. Dow, et al, Centennial Park Place Addition", of record in Plat Book 4, Page 313 and being further described in a deed to Crosstown Building, LLC, of record in Instrument Number 200010170211276, all references to records are on file in the Recorder's Office, Franklin County, Ohio.



Location Map
not to scale

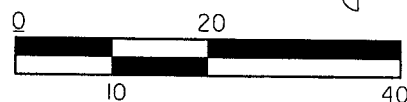
The basis of bearings for this description are based on a bearing of South 38°48'24" West on the centerline of Cleveland Avenue and is based on the Ohio State Plane Coordinate System, South Zone and the North American Datum of 1983.

- ① N86°57'12"W - 6.13'
- ② N01°32'03"W - 16.14'
- ③ N29°19'27"W - 11.28'
- ④ S45°44'43"E - 2.09'
- ⑤ S29°19'27"E - 13.04'
- ⑥ S17°18'27"E - 14.11'

11th Ave. (60')

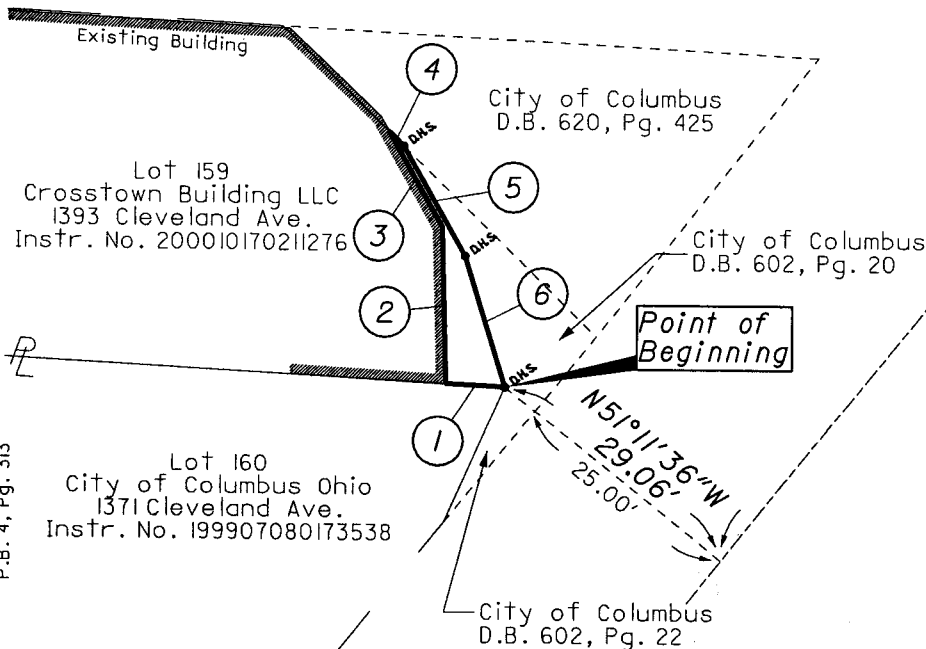
Point of Reference

S38°48'24"W 102.10'
Cleveland Ave. (55')



MONUMENT LEGEND

- ⊞ EXISTING 1" IRON PIN WITH NO CAP FOUND IN A MONUMENT BOX
- ⊙ P.P. IRON PIPE FOUND WITH NO CAP
- ⊞ D.H.S. DRILL HOLE SET



We hereby certify that the foregoing boundary survey was prepared from an actual field survey of the premises in October, 2006 by ms consultants, inc. under the direct supervision of John L. Price, Registered Professional Surveyor No. 7159.

ms consultants, inc.

John L. Price
Registered Professional Surveyor No. 7159



12/20/06

Plotted: 12/20/2006 04:07:21 PM
File: I:\drawing\24\06\715\324\dgn\Sheets\675\lth&cleveland.dgn