

EMH&T

Evans, Mechwart, Hambleton & Tilton, Inc.
Engineers • Surveyors • Planners • Scientists
5500 New Albany Road, Columbus, OH 43054
Phone: 614.775.4500 Fax: 614.775.4800

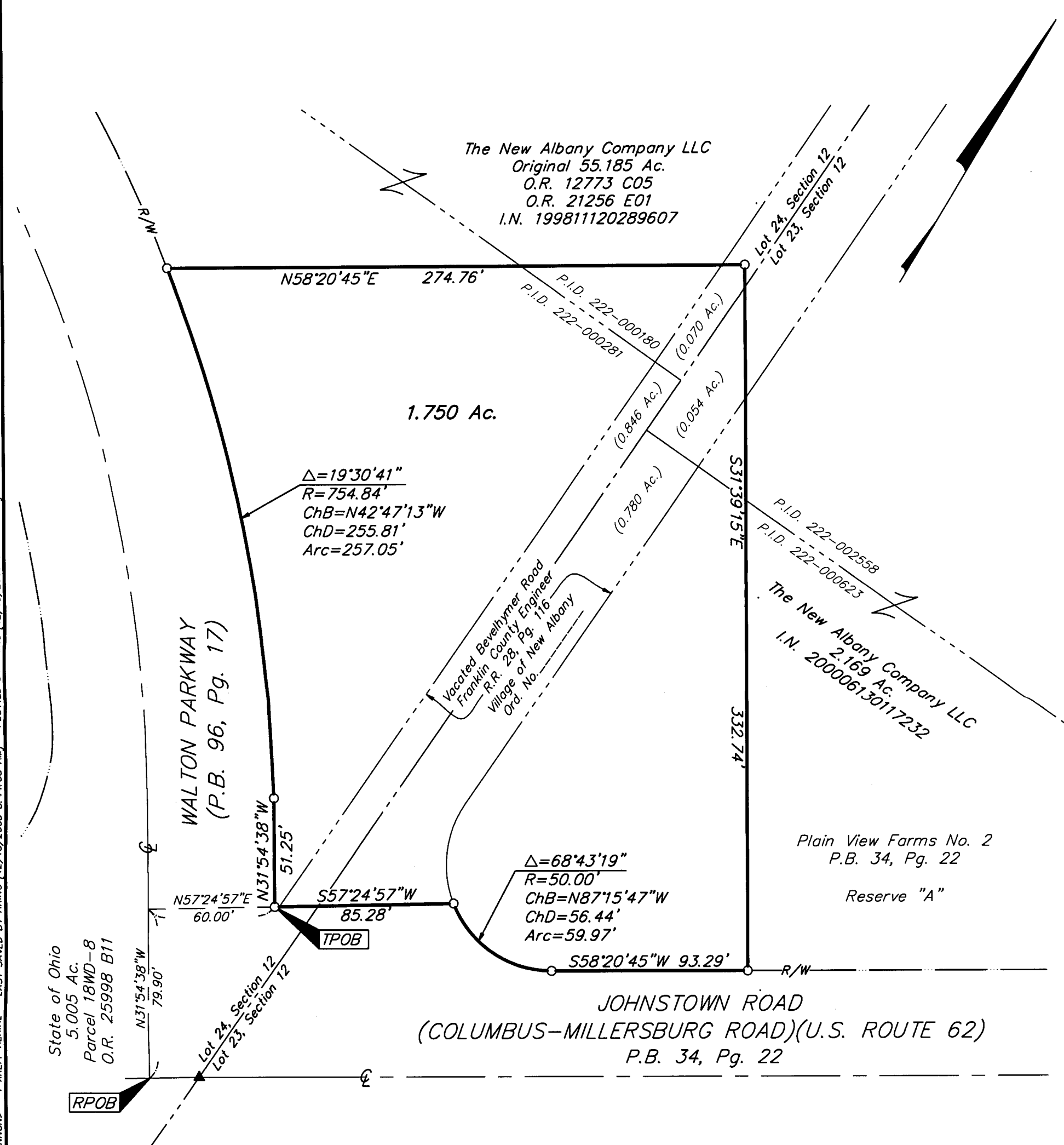
SURVEY OF ACREAGE PARCEL LOTS 23 AND 24, SECTION 12, QUARTER TOWNSHIP 1, TOWNSHIP 2, RANGE 16 UNITED STATES MILITARY LANDS VILLAGE OF NEW ALBANY, FRANKLIN COUNTY, OHIO

Date: December 18, 2006

Scale: 1" = 50'

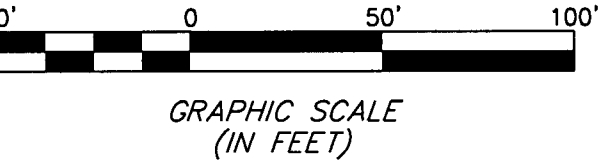
Job No: 2006-2500

M C M X X V I



\\CMHDATA1\SURVEY\PROJECT\20062500\DWG\62500BV.DWG-11X17 PORTRAIT CANNON - 1 XREF: AERIAL - LAST SAVED BY HKING [12/18/2006 8:44:58 AM] - PLOTTED BY HKING [12/18/2006 8:44:59 AM]

BASIS OF BEARINGS: Bearings are based on the Ohio State Plane Coordinate System as per NAD83, South Zone (1986 Adjustment). Control for bearings is a control traverse performed by EMH&T Inc. which determines the bearing of a portion of the centerline of Johnstown Road (Columbus-Millersburg Road)(US Route 62) as being North 58° 20' 45" East.



○ = I.P. SET
 ▲ = R.R. SPK. FND.
 I.P. Set are 13/16" I.D. iron pipe with cap inscribed EMHT INC



By *Heather L. King* 12/18/06
 Professional Surveyor No. 8307