



Evans, Mechwart, Hambleton & Tilton, Inc.  
 Engineers • Surveyors • Planners • Scientists  
 5500 New Albany Road, Columbus, OH 43054  
 Phone: 614.775.4500 Fax: 614.775.4800

M C M X X V I

**RIGHT-OF-WAY ACQUISITION**  
**VIRGINIA MILITARY SURVEY NO. 3012**  
**CITY OF COLUMBUS, FRANKLIN COUNTY, OHIO**

Date: December 11, 2006

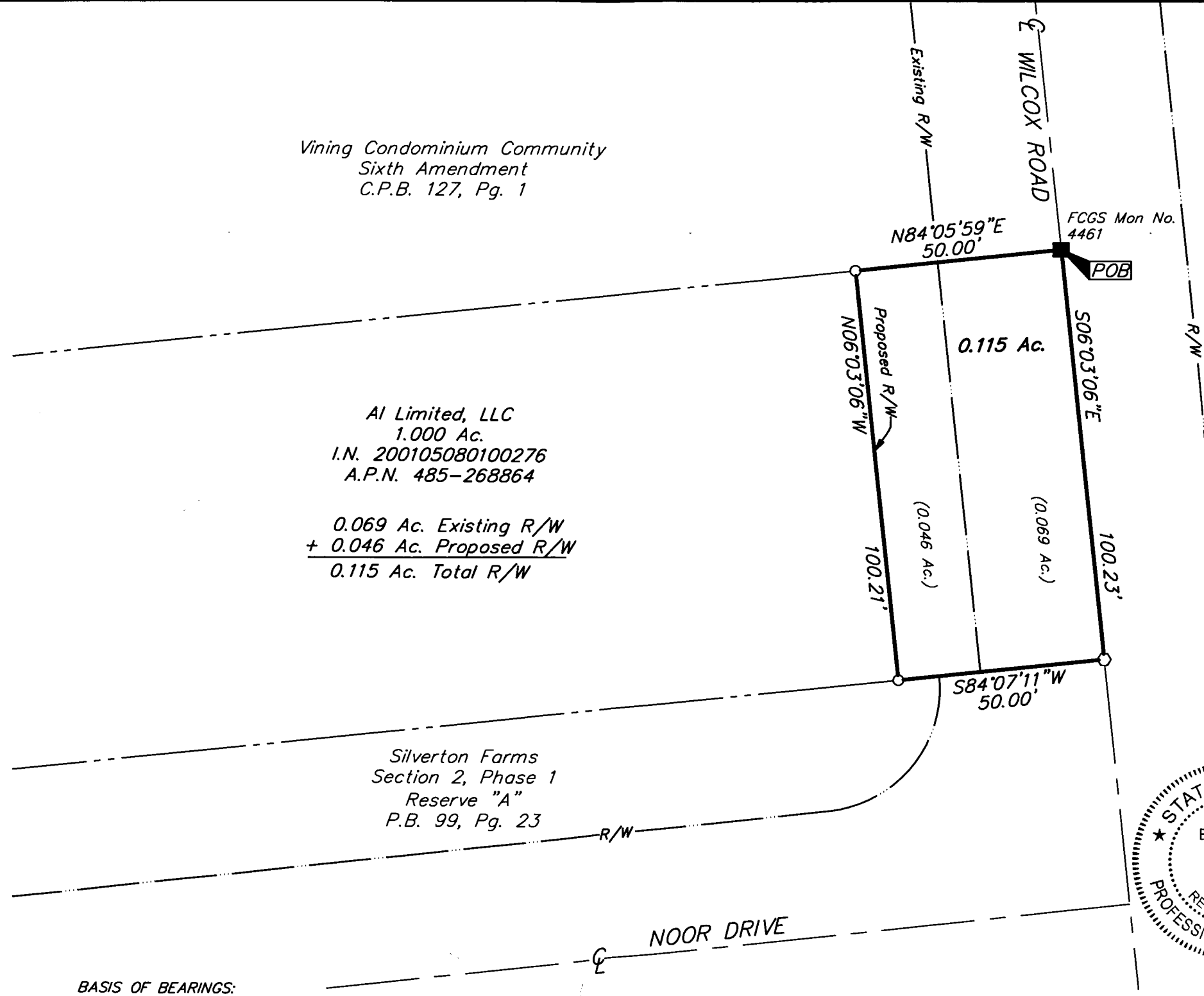
Scale: 1" = 30'

Job No: 2006-0428

**RECEIVED**

DEC 12 2006

Franklin County Engineer  
 Dean C. Ringle, P.E., P.S.



- = STONE FND.
- = MON. FND.
- = I.P. FND.
- = I.P. SET
- = MAG. NAIL FND.
- = MAG. NAIL SET
- ▲ = R.R. SPK. FND.
- △ = R.R. SPK. SET
- ◆ = P.K. NAIL FND.

I.P. Set are 13/16" I.D. iron pipe with cap inscribed EMHT INC




GRAPHIC SCALE  
 (IN FEET)

**BASIS OF BEARINGS:**

Bearings are based on the Ohio State Plane Coordinate System South Zone per NAD83 (1986 adjustment). Control for bearings was from coordinates of monuments 4461 and 5542, having a bearing of South 06° 03' 06" East for a portion of the centerline of Wilcox Road, established by the Franklin County Engineering Department.



By  12/12/06  
 Professional Surveyor No. 8250

I:\CHDATA\1\SURVEY\PROJECT\20060428\DWG\60428RW\DWG-11X17 LAND CANNONS - NO XREES - LAST SAVED BY TBAXTER [11/21/2006 10:02:11 AM] - PLOTTED BY TBAXTER [12/11/2006 2:13:39 PM]