



Evans, Mechwart, Hambleton & Tilton, Inc.
 Engineers • Surveyors • Planners • Scientists
 5500 New Albany Road, Columbus, OH 43054
 Phone: 614.775.4500 Fax: 614.775.4800

SURVEY OF ACREAGE PARCEL
VIRGINIA MILITARY SURVEY NO. 8231
CITY OF GROVE CITY, FRANKLIN COUNTY, OHIO

Date: November 27, 2006

Job No. 2006-2425

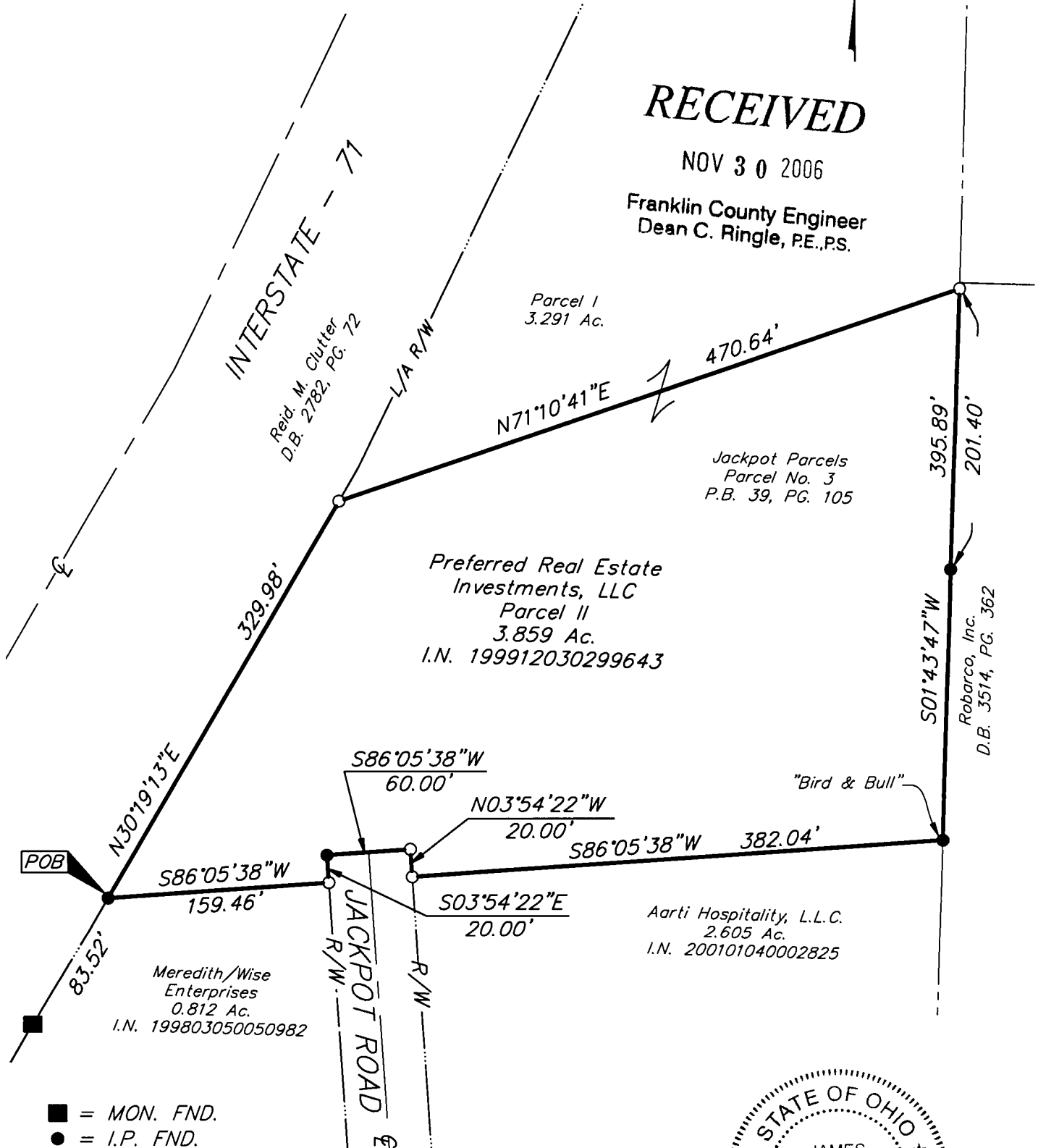
Scale: 1" = 100'

BASIS OF BEARINGS: Bearings are based on the Ohio State Plane Coordinate System—South Zone as per NAD83 (1986 adjustment). Control for bearings was from coordinates of monuments FRANK 25 and FRANK 125, establishing a bearing of North 25° 53' 56" East for the easterly right-of-way line of Interstate 71, as established by the Franklin County Engineering Department, using Global Positioning System procedures and equipment.

RECEIVED

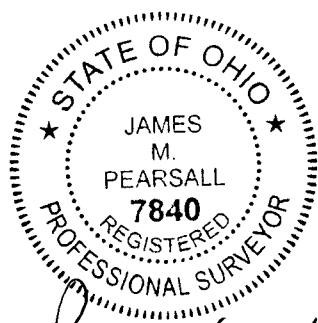
NOV 30 2006

Franklin County Engineer
 Dean C. Ringle, P.E., P.S.



- = MON. FND.
- = I.P. FND.
- = I.P. SET

I.P. Set are 13/16" I.D. iron pipe with cap inscribed EMHT INC



By *James M. Pearsall* 11/30/06
 Professional Surveyor No. 7840



GRAPHIC SCALE
(IN FEET)

\\CMHDATA\PROJECT\20062425\DWG\62425BVI.DWG<LEGAL PORTRAIT> - NO XREFS - LAST SAVED BY TMEBB [11/29/2006 2:01:51 PM] - PLOTTED BY TMEBB [11/29/2006 2:01:52 PM]