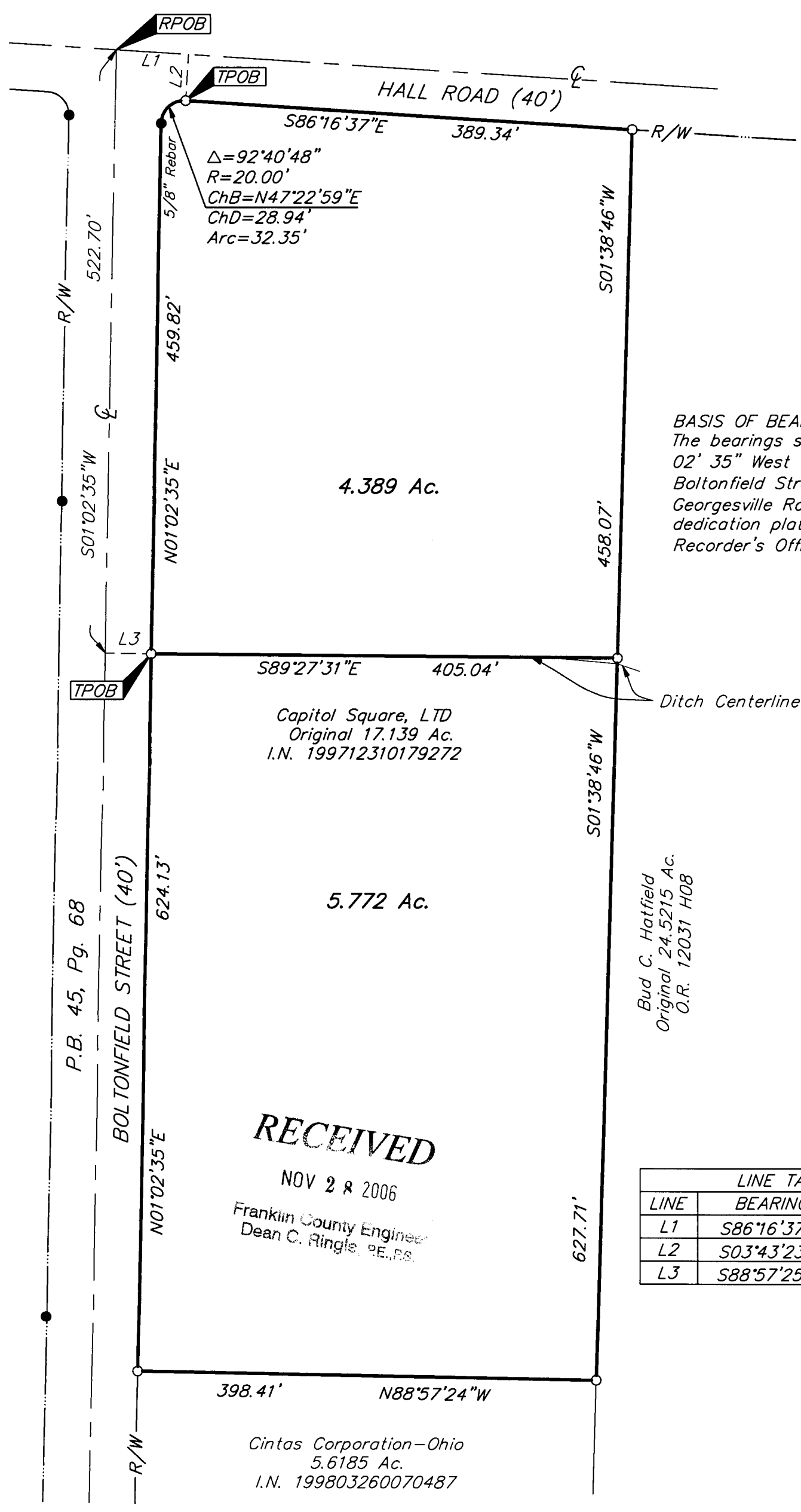


**SURVEY OF ACREAGE PARCEL**  
**VIRGINIA MILITARY SURVEY NO. 1462**  
**CITY OF COLUMBUS, FRANKLIN COUNTY, OHIO**

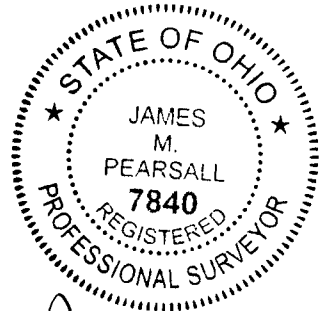
Date: September 29, 2006  
 Scale: 1" = 100'  
 Job No: 2006-2028



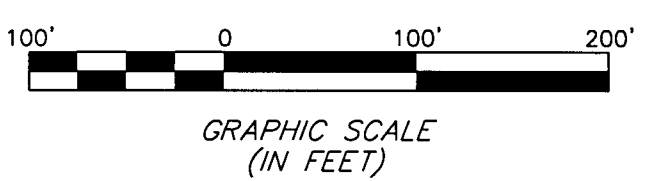
**BASIS OF BEARINGS:**  
 The bearings shown hereon are based on South 01' 02' 35" West for a portion of the centerline of Boltonfield Street, as shown in "Dedication of Georgesville Road, Hall Road & Boltonfield Street", a dedication plat of record in Plat Book 45, Page 68, Recorder's Office, Franklin County, Ohio.

**RECEIVED**  
 NOV 28 2006  
 Franklin County Engineer  
 Dean C. Ringle, P.E., P.S.

LINE	BEARING	DISTANCE
L1	S86°16'37"E	62.87'
L2	S03°43'23"W	40.00'
L3	S88°57'25"E	40.00'



By *James M. Pearsall* 9/29/06  
 Professional Surveyor No. 7840



\\CMHDATA1\SURVEY\PROJECT\20062028\DWG\62028BV.DWG<11X17 PORTRAIT CANNON> - NO XREFS - LAST SAVED BY JMEYER [9/29/2006 10:46:03 AM] - PLOTTED BY JMEYER [9/29/2006 10:46:04 AM]