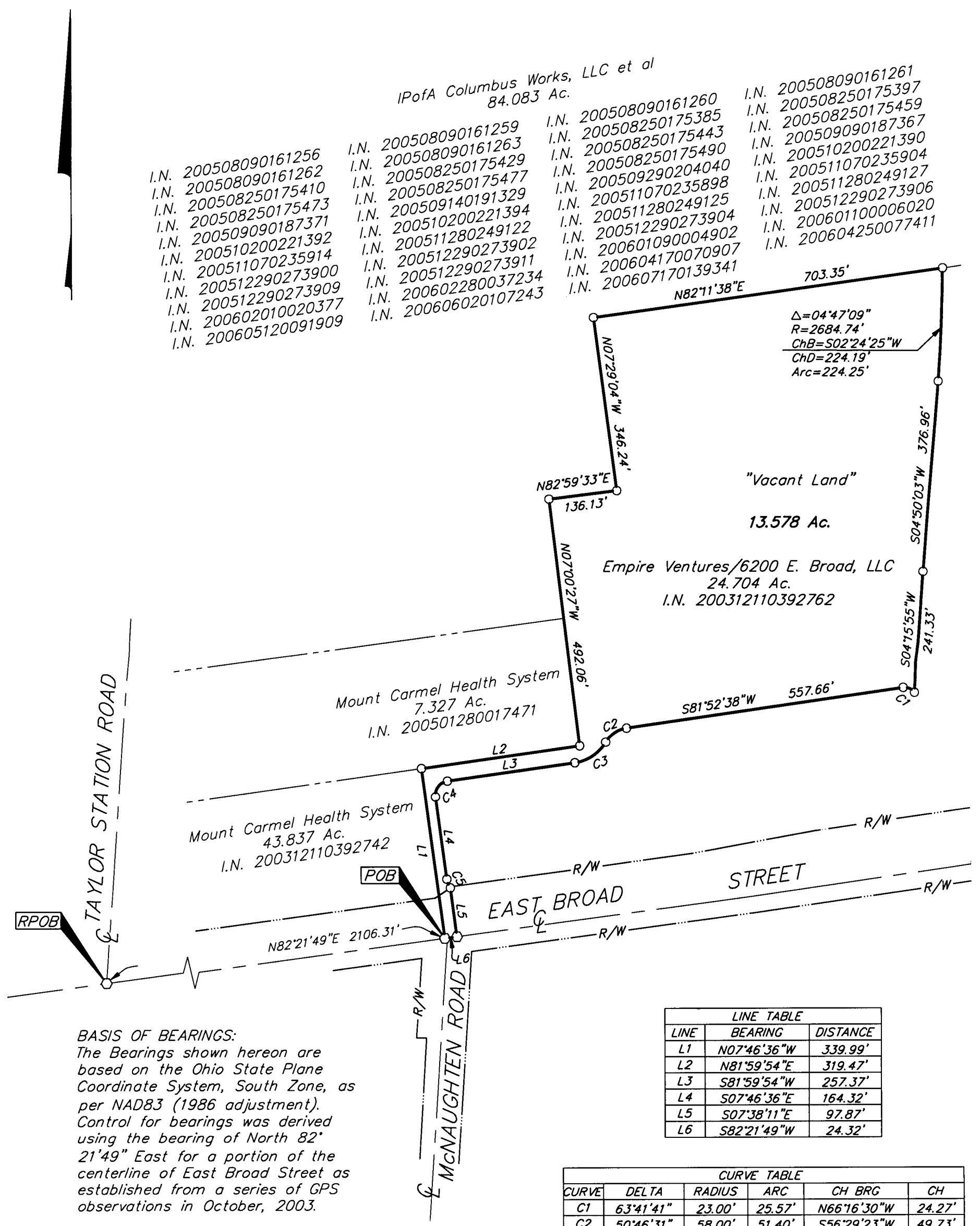


- I.PofA Columbus Works, LLC et al
 84.083 Ac.
- I.N. 200508090161256
 - I.N. 200508090161262
 - I.N. 200508250175410
 - I.N. 200508250175473
 - I.N. 200509090187371
 - I.N. 200510200221392
 - I.N. 200511070235914
 - I.N. 200512290273900
 - I.N. 200512290273909
 - I.N. 200512290273909
 - I.N. 200602010020377
 - I.N. 200605120091909
 - I.N. 200508090161259
 - I.N. 200508090161263
 - I.N. 200508250175429
 - I.N. 200508250175477
 - I.N. 200509140191329
 - I.N. 200510200221394
 - I.N. 200511280249122
 - I.N. 200512290273902
 - I.N. 200512290273911
 - I.N. 200602280037234
 - I.N. 200606020107243
 - I.N. 200508090161260
 - I.N. 200508250175385
 - I.N. 200508250175443
 - I.N. 200508250175490
 - I.N. 200509290204040
 - I.N. 200511070235898
 - I.N. 200511280249125
 - I.N. 200512290273904
 - I.N. 200601090004902
 - I.N. 200604170070907
 - I.N. 200607170139341
 - I.N. 200508090161261
 - I.N. 200508250175397
 - I.N. 200508250175459
 - I.N. 200509090187367
 - I.N. 200510200221390
 - I.N. 200511070235904
 - I.N. 200511280249127
 - I.N. 200512290273906
 - I.N. 200601100006020
 - I.N. 200604250077411



BASIS OF BEARINGS:
 The Bearings shown hereon are based on the Ohio State Plane Coordinate System, South Zone, as per NAD83 (1986 adjustment). Control for bearings was derived using the bearing of North 82° 21'49" East for a portion of the centerline of East Broad Street as established from a series of GPS observations in October, 2003.

LINE TABLE		
LINE	BEARING	DISTANCE
L1	N07°46'36"W	339.99'
L2	N81°59'54"E	319.47'
L3	S81°59'54"W	257.37'
L4	S07°46'36"E	164.32'
L5	S07°38'11"E	97.87'
L6	S82°21'49"W	24.32'

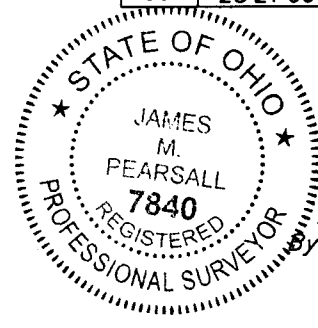
CURVE TABLE					
CURVE	DELTA	RADIUS	ARC	CH BRG	CH
C1	63°41'41"	23.00'	25.57'	N66°16'30"W	24.27'
C2	50°46'31"	58.00'	51.40'	S56°29'23"W	49.73'
C3	50°53'46"	86.00'	76.39'	S56°33'01"W	73.91'
C4	89°46'30"	28.00'	43.87'	S37°06'39"W	39.52'
C5	28°21'06"	38.00'	18.80'	S21°57'09"E	18.61'

- = I.P. SET
- = MAG. NAIL SET

I.P. Set are 13/16" I.D. iron pipe with cap inscribed EMHT INC



GRAPHIC SCALE (IN FEET)



James M. Pearsall 11/27/06
 Professional Surveyor No. 7840

I:\CMHDATA1\SURVEY\PROJECT\20041116\DWG\41116BV7.DWG-11X17 PORTRAIT CANNON - NO XREFS - LAST SAVED BY JMEYER [11/27/2006 8:31:34 AM] - PLOTTED BY JMEYER [11/27/2006 8:31:34 AM]