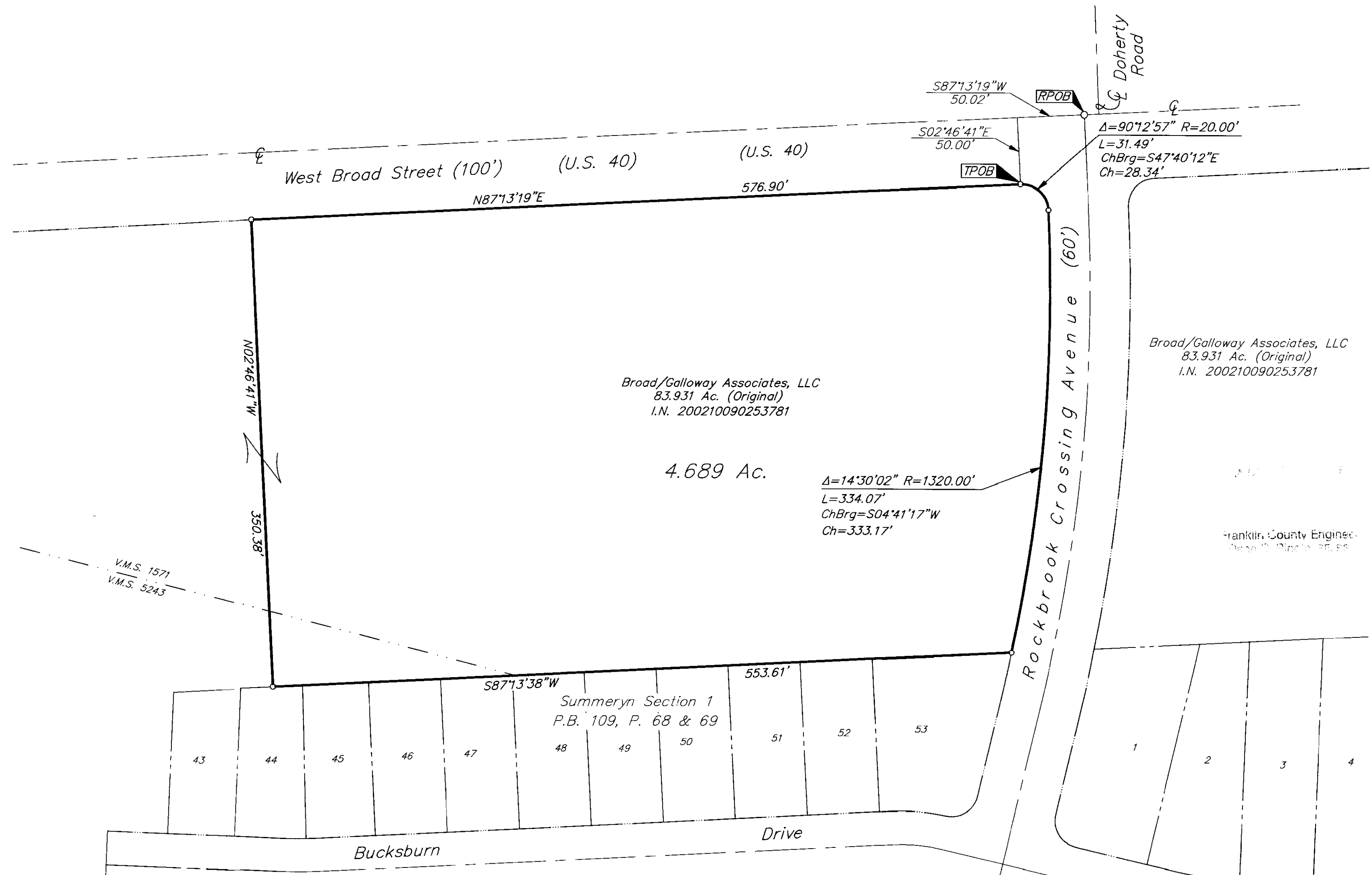


# SURVEY OF ACREAGE PARCEL

## VIRGINIA MILITARY SURVEY NUMBERS 1571 AND 5243

### CITY OF COLUMBUS, FRANKLIN COUNTY, OHIO



Broad/Galloway Associates, LLC  
83.931 Ac. (Original)  
I.N. 200210090253781

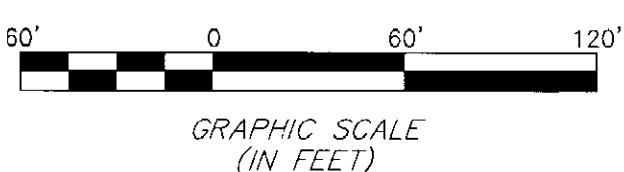
4.689 Ac.

$\Delta=14^{\circ}30'02''$   $R=1320.00'$   
 $L=334.07'$   
 $ChBrg=S04^{\circ}41'17''W$   
 $Ch=333.17'$

Broad/Galloway Associates, LLC  
83.931 Ac. (Original)  
I.N. 200210090253781

Franklin County Engineer  
Deputy Director

- = STONE FND.
  - = MON. FND.
  - = I.P. FND.
  - = I.P. SET
  - = MAG. NAIL FND.
  - = MAG. NAIL SET
  - ▲ = R.R. SPK. FND.
  - △ = R.R. SPK. SET
  - ◆ = P.K. NAIL FND.
- I.P. Set are 13/16" I.D. iron pipe with cap inscribed EMHT INC



**BASIS OF BEARINGS:** Bearings shown hereon were transferred from a field traverse originating from and tying to Franklin County Survey Control Monuments Frank 39 and Frank 139, with a bearing of South 89°56'04" West between said monuments, as established by the Franklin County Engineers Department and are based on the Ohio State Plane Coordinate System, South Zone as per NAD 83, 1986 adjustment.

By:   
Professional Surveyor No. 8250

 Evans, Mechwart, Hambleton & Tilton, Inc. Engineers • Surveyors • Planners • Scientists 5500 New Albany Road, Columbus, OH 43054 Phone: 614.775.4500 Fax: 614.775.4800	Date: September 21, 2006	
	Scale: 1" = 60'	
	Job No: 2006-2029	
	Sheet: 1 of 1	
<b>REVISIONS</b>		
MARK	DATE	DESCRIPTION

C:\MIDATA1\SURVEY\PROJECT\20062029\DWG\BOUNDARY\62029B.VI.DWG<18X24 LANDSCAPE> - NO XREFS - LAST SAVED BY JMASTON [10/13/2006 1:01:08 PM] - PLOTTED BY JMASTON [10/13/2006 1:46:55 PM]