

**SURVEY OF ACREAGE PARCEL**  
**SURVEY NUMBER 469**  
**VIRGINIA MILITARY DISTRICT**  
**CITY OF GROVE CITY, FRANKLIN COUNTY, OHIO**

**RECEIVED**

OCT 10 2006

Franklin County Engineer  
 Dean C. Ringle, P.E., P.S.

Parkway Centre East, LLC  
 I.N. 200509290203973  
 37.012 Ac

All iron pins set are 3/4" diameter, 30" long iron pipe with plastic cap inscribed "Advanced 7661".

Bearings were transferred from a GPS survey of Franklin County Monuments "Frank 25" and "Frank 125" performed by the Franklin County Engineer's Office, and is based upon the NAD83 Ohio State Plane Coordinate System, South Zone, 1986 Adjustment, and determines the bearing between said monuments as S 87° 46' 00" E.

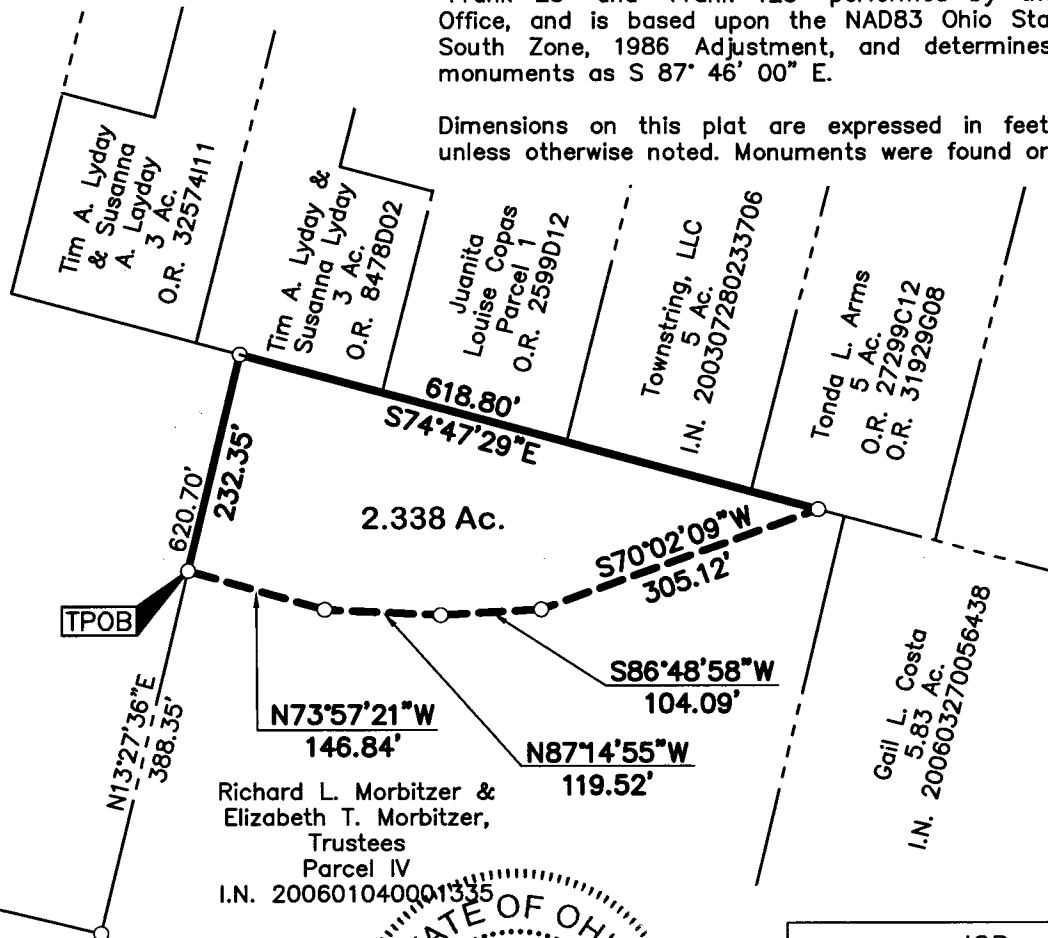
Dimensions on this plat are expressed in feet and decimal parts thereof unless otherwise noted. Monuments were found or set where indicated.

R/W  
**BUCKEYE PARKWAY**  
 P.B. 105, Pg. 69-70

LAMPLIGHTER DRIVE (60')  
 P.B. 105, Pg. 69

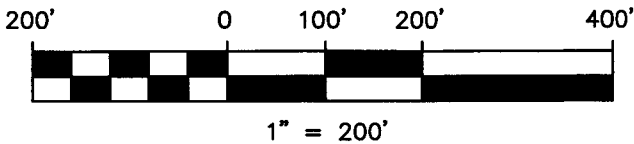
Epcon Fountainview, LLC  
 I.N. 200403220061658

A.P.N. 040-012669

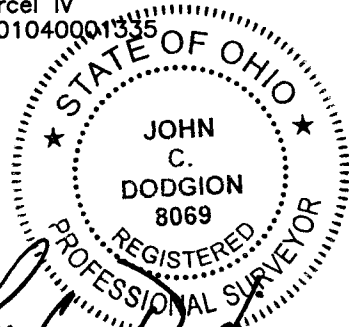


**LEGEND**

- Iron Pin Set W / Cap
- ⊗ PK Nail Set
- △ RR Spike Set
- ⊕ Monument
- Iron Pin Found
- ⊗ PK Nail Found
- ▲ RR Spike Found
- ⊠ Monument Box



Richard L. Morbitzer &  
 Elizabeth T. Morbitzer,  
 Trustees  
 Parcel IV  
 I.N. 200601040001335



10/10/06  
 John C. Dodgion  
 Professional Surveyor No. 8069

DRAWN BY: JCD	JOB NO.: 05-0012-11
DATE: 09/29/06	CHECKED BY: DRH

**ADVANCED**  
 CIVIL DESIGN  
 ENGINEERS SURVEYORS

422 Beecher Road  
 Gahanna, Ohio 43230  
 ph 614.428.7750  
 fax 614.428.7755