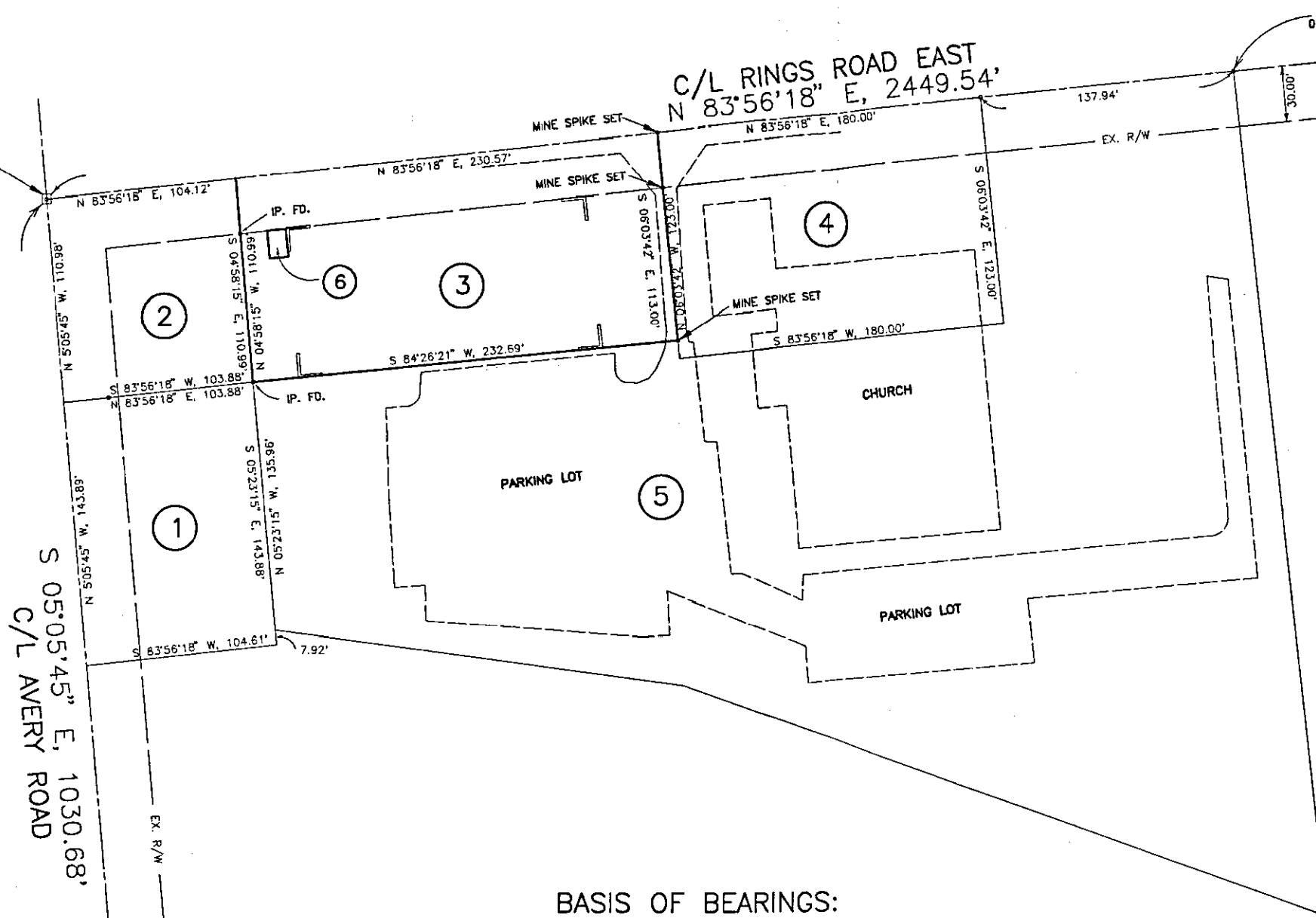


SURVEY PLAT SANDY CORNERS CEMETERY VMS 3004, WASHINGTON TOWNSHIP

FCGS 4412
MON. BOX ASSEMBLY



FCGS 2229
MON. BOX ASSEMBLY



- ① ST. JOHN'S LUTHERAN CHURCH
0.345 AC. (1880)
- ② ST. JOHN'S LUTHERAN CHURCH
0.265 AC. (1946)
- ③ WASHINGTON TOWNSHIP (SANDY CORNERS CEMETERY)
0.596 AC. (1854)
- ④ TRUSTEES OF THE EVANGELICAL LUTHERAN ST. JOHN'S CHURCH
0.508 AC. (1900)
- ⑤ ST. JOHN'S EVANGELICAL LUTHERAN CHURCH
3.13 AC. (1906)
- ⑥ PROPOSED AMERITECH EASEMENT (10' * 15')
(INITIAL EASEMENT OBTAINED FROM CHURCH, NOT TOWNSHIP)

BASIS OF BEARINGS:

BEARINGS WERE ESTABLISHED FROM A GPS CONTROL SURVEY, OCCUPYING SURVEY MONUMENTS "FCGS 2229" AND "FCGS 4412", PERFORMED BY THE FRANKLIN COUNTY ENGINEER'S OFFICE IN 1991, AND ARE BASED ON THE OHIO PLANE COORDINATE SYSTEM, SOUTH ZONE AND THE NORTH AMERICAN DATUM OF 1983.

THIS PLAT WAS PREPARED FROM AN ACTUAL FIELD SURVEY PERFORMED BY THE FRANKLIN COUNTY ENGINEER'S OFFICE, ALONG WITH PUBLIC RECORDS ON FILE IN THE FRANKLIN COUNTY RECORDER'S OFFICE AND THE FRANKLIN COUNTY ENGINEER'S OFFICE

THIS PLAT WAS PREPARED FOR THE WASHINGTON TOWNSHIP TRUSTEES BY THE SURVEY DEPARTMENT OF THE FRANKLIN COUNTY ENGINEER ON THE 26TH DAY OF SEPTEMBER, 1995 AND UPDATED OCTOBER 23, 1995 TO DEPICT SPIKES SET.

FCGS 8847
MON. BOX ASSEMBLY

Dean C. Ringle Nov 21, 1995
DEAN C. RINGLE DATE
REGISTERED PROFESSIONAL SURVEYOR #7017

C/L RINGS ROAD WEST
C/L CARA ROAD