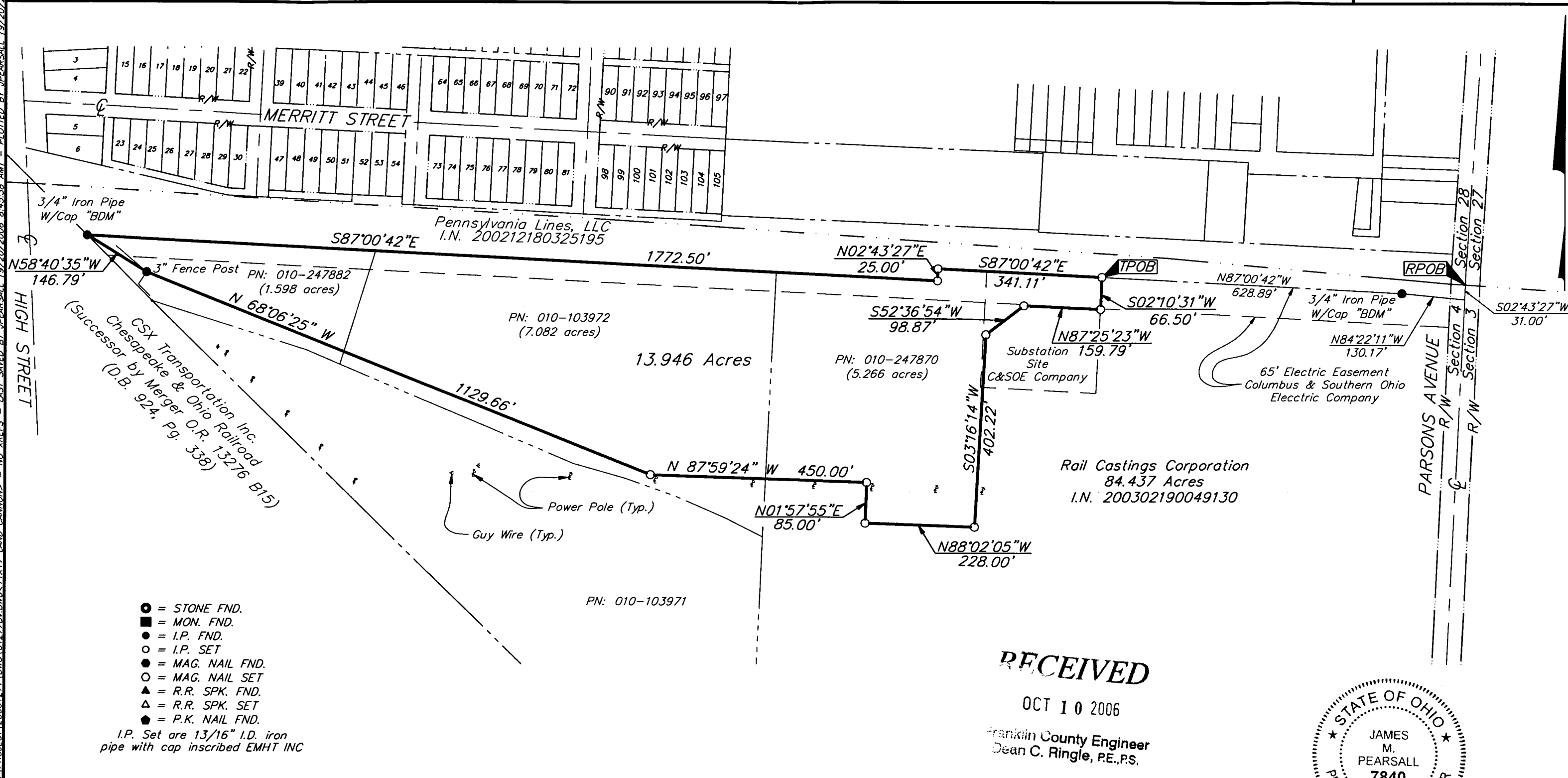


EMH&T
 Evans, Mechwart, Hambleton & Tilton, Inc.
 Engineers • Surveyors • Planners • Scientists
 5500 New Albany Road, Columbus, OH 43054
 Phone: 614.775.4500 Fax: 614.775.4800

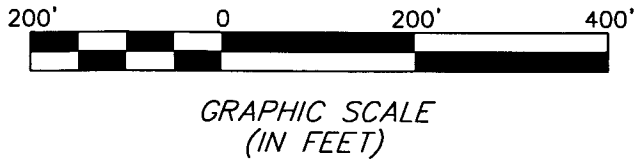
SURVEY OF ACREAGE PARCEL
SECTION 4, TOWNSHIP 4, RANGE 22
CONGRESS LANDS
 CITY OF COLUMBUS, FRANKLIN COUNTY, OHIO

Date: September 22, 2006
 Scale: 1" = 200'
 Job No: 2006-1277

I:\CMHDATA\1\SURVEY\PROJECT\20061277\DWG\61277BV.DWG-11X17 LAND CANNON- NO XREFS - LAST SAVED BY JPEARSALL [9/20/2006 8:45:38 AM] - PLOTTED BY JPEARSALL [9/20/2006 8:45:41 AM]

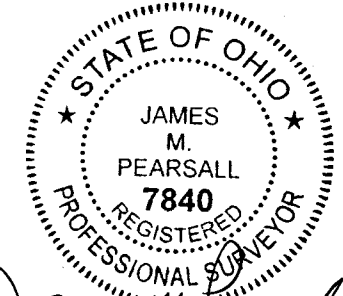


- = STONE FND.
 - = MON. FND.
 - = I.P. FND.
 - = I.P. SET
 - = MAG. NAIL FND.
 - = MAG. NAIL SET
 - ▲ = R.R. SPK. FND.
 - △ = R.R. SPK. SET
 - ◆ = P.K. NAIL FND.
- I.P. Set are 13/16" I.D. iron pipe with cap inscribed EMHT INC



BASIS OF BEARINGS: The bearings herein are based on a portion of the centerline of Hosack Street, being South 87°00'00" East, as shown on the subdivision entitled "Karch and Lyons Subdivision" of record in Plat Book 5, Page 228, Recorder's Office, Franklin County, Ohio.

RECEIVED
 OCT 10 2006
 Franklin County Engineer
 Dean C. Ringle, P.E., P.S.



By *James M. Pearsall* 10/9/06
 Professional Surveyor No. 7840