

# RIGHT OF WAY DEDICATION PLAT

## McCUTCHEON ROAD

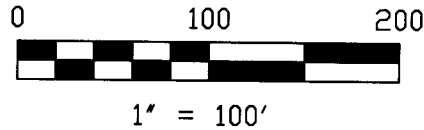
### 0.414 ACRES

SITUATED IN THE STATE OF OHIO, COUNTY OF FRANKLIN, CITY OF COLUMBUS,  
 QUARTER TOWNSHIP 2, TOWNSHIP 1, RANGE 17, UNITED STATES MILITARY LANDS,  
 AND BEING OUT OF AN ORIGINAL 13.538 ACRE TRACT AS CONVEYED TO CHRIST  
 COMMUNITY CHURCH OF OHIO IN INST. No. 200407220170030, FRANKLIN COUNTY  
 RECORDER'S OFFICE, FRANKLIN COUNTY, OHIO.

**RECEIVED**

OCT 13 2006

Franklin County Engineer  
 Dean C. Ringle, P.E., P.S.



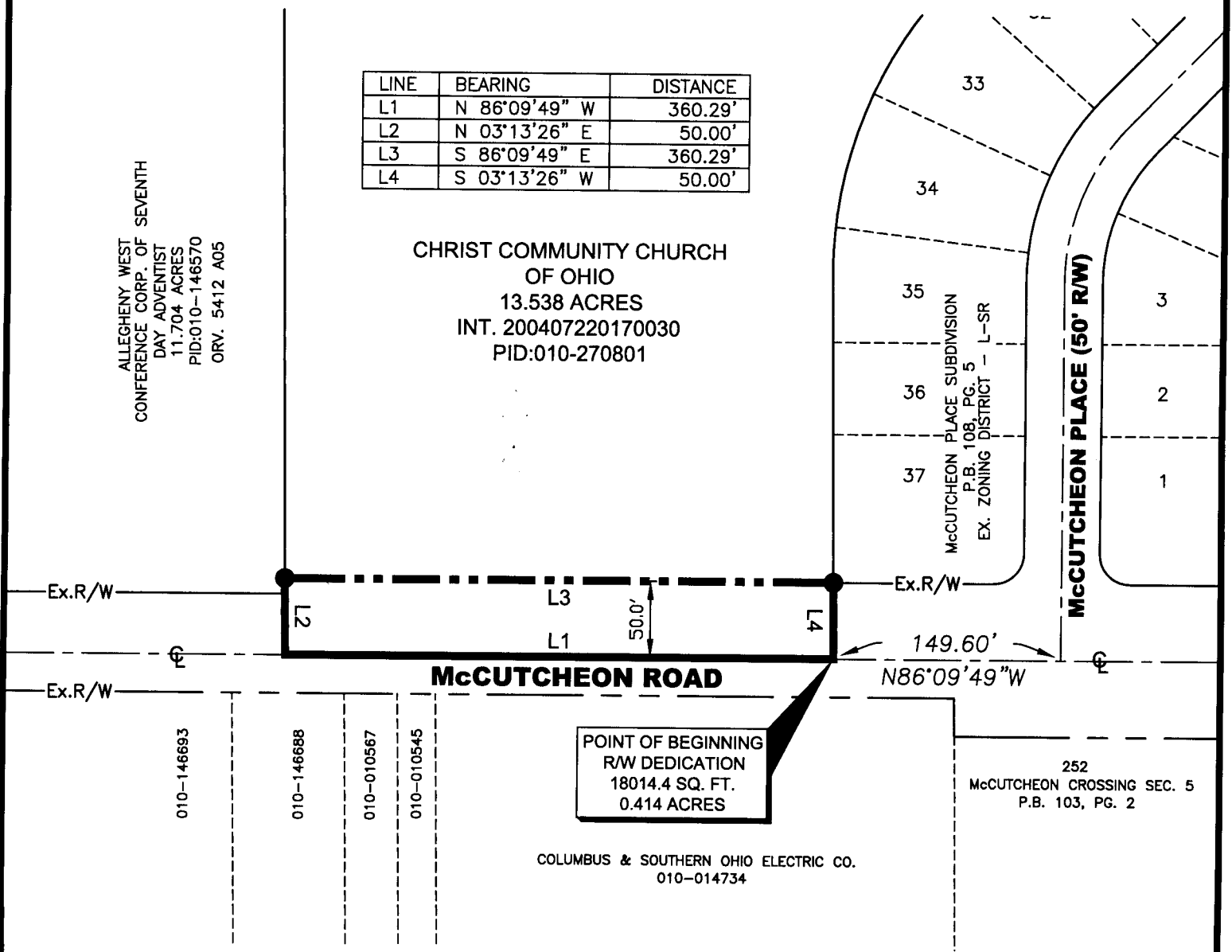
LINE	BEARING	DISTANCE
L1	N 86°09'49" W	360.29'
L2	N 03°13'26" E	50.00'
L3	S 86°09'49" E	360.29'
L4	S 03°13'26" W	50.00'

ALLEGHENY WEST  
 CONFERENCE CORP. OF SEVENTH  
 DAY ADVENTIST  
 11.704 ACRES  
 PID:010-146570  
 ORV. 5412 A05

CHRIST COMMUNITY CHURCH  
 OF OHIO  
 13.538 ACRES  
 INT. 200407220170030  
 PID:010-270801

McCUTCHEON PLACE SUBDIVISION  
 P.B. 108, PG. 5  
 EX. ZONING DISTRICT - L-SR

McCUTCHEON PLACE (50' R/W)



POINT OF BEGINNING  
 R/W DEDICATION  
 18014.4 SQ. FT.  
 0.414 ACRES

COLUMBUS & SOUTHERN OHIO ELECTRIC CO.  
 010-014734

252  
 McCUTCHEON CROSSING SEC. 5  
 P.B. 103, PG. 2

**LEGEND**

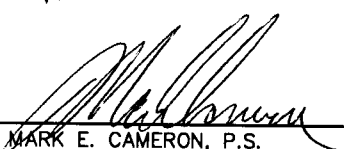
- 3/4" IRON PIPE SET
- Note: All iron pins (set) are 3/4" Iron Pipe, 30 inches long and bearing an Orange cap imprinted with "CPS Consulting".

**BASIS OF BEARINGS:**  
 THE BEARINGS SHOWN ON THIS PLAT WERE TRANSFERRED FROM A FIELD TRAVERSE ORIGINATING FROM AND TYING TO FRANKLIN COUNTY SURVEY CONTROL MONUMENTS, INCLUDING FRANK 164 AND FRANK 64 - OHIO STATE PLANE COORDINATE SYSTEM, SOUTH ZONE - NAD 83 (1986 ADJ.), HAVING A BEARING OF NORTH 54°15'02" WEST.

**CERTIFICATION:**  
 WE DO HEREBY STATE THAT WE HAVE SURVEYED THE PREMISES, PREPARED THE ATTACHED PLAT, AND TO THE BEST OF MY KNOWLEDGE AND BELIEF, SAID PLAT IS CORRECT. ALL DIMENSIONS ARE SHOWN IN FEET AND DECIMAL PARTS THEREOF.



**ENGINEERS & SURVEYORS**  
 1495 OLD HENDERSON ROAD  
 COLUMBUS, OHIO 43220  
 614-459-6992  
 Fax: 614-459-6987

  
 MARK E. CAMERON, P.S.      Date October 6<sup>th</sup>, 2006  
 Professional Surveyor No. 7395