

EMH&T

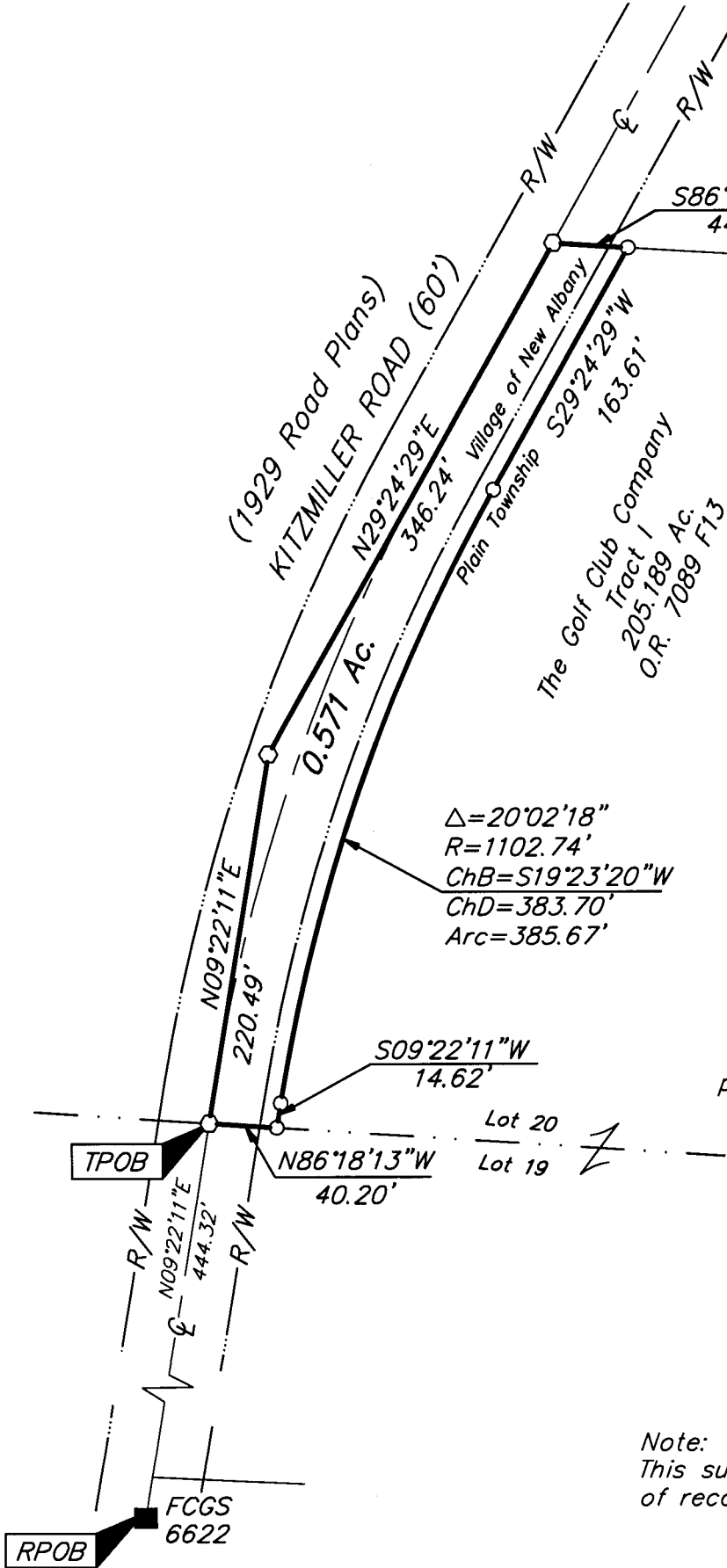
Evans, Mechwart, Hambleton & Tilton, Inc.
Engineers • Surveyors • Planners • Scientists
5500 New Albany Road, Columbus, OH 43054
Phone: 614.775.4500 Fax: 614.775.4800

SURVEY OF ACREAGE PARCEL LOT 20, QUARTER TOWNSHIP 4, TOWNSHIP 2, RANGE 16 UNITED STATES MILITARY LANDS VILLAGE OF NEW ALBANY & TOWNSHIP OF PLAIN, FRANKLIN COUNTY, OHIO

Date: October 3, 2006

Job No. 2004-0658

Scale: 1" = 100'



- = STONE FND.
- = MON. FND.
- = I.P. FND.
- = I.P. SET
- = MAG. NAIL FND.
- = MAG. NAIL SET
- ▲ = R.R. SPK. FND.
- △ = R.R. SPK. SET
- ◆ = P.K. NAIL FND.

I.P. Set are 13/16" I.D. iron pipe with cap inscribed EMHT INC

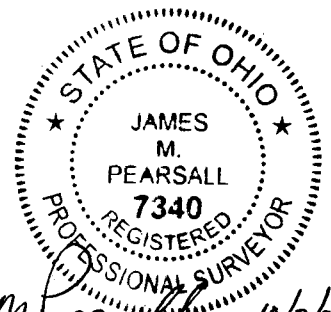
RECEIVED

OCT 03 2006

Franklin County Engineer
Dean C. Ringle, PE., PS.

Note:
This survey was prepared using documents of record, and prior plats of survey.

BASIS OF BEARINGS: Bearings are based on the Ohio State Plane Coordinate System (South Zone) as per NAD83 (1986 Adjustment). Control for bearings was from coordinates of monuments 7708 & 6622, established by the Franklin County Engineering Department, using Global Positioning System procedures and equipment, and showing a bearing of North 09° 22' 11" East for a portion of the centerline of Kitzmiller Road.



By *James M. Pearsall* 10/3/06
Professional Surveyor No. 7840



GRAPHIC SCALE
(IN FEET)

\\CMHDATA1\SURVEY\PROJECT\20040658\DWG\40658B\1.DWG<LEGAL PORTRAITS> - NO XREFS - LAST SAVED BY TMEBB [10/3/2006 11:02:02 AM] - PLOTTED BY TMEBB [10/3/2006 11:02:02 AM]