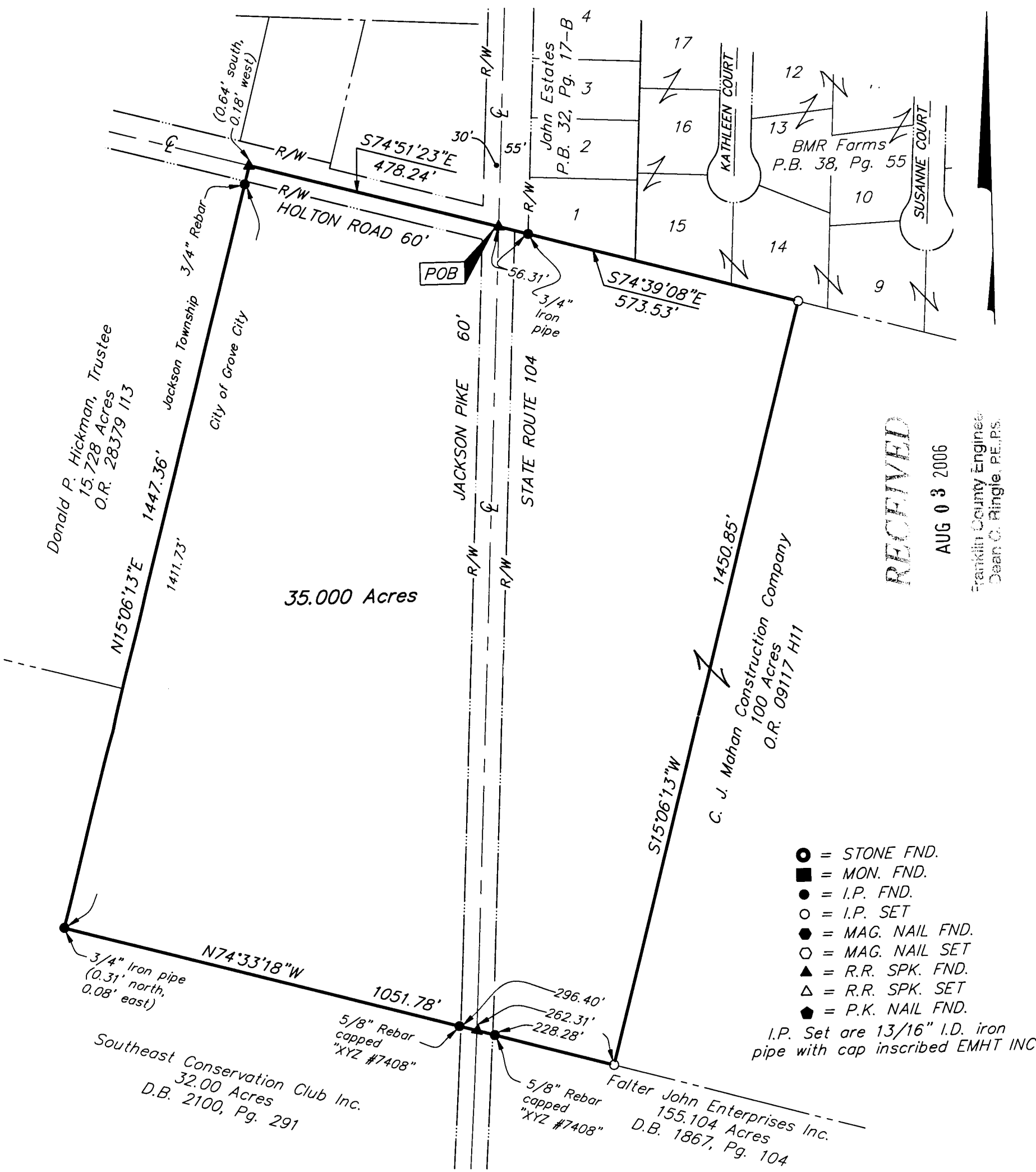


SURVEY OF ACREAGE PARCEL
VIRGINIA MILITARY SURVEY 478
UNITED STATES MILITARY LANDS
CITY OF GROVE CITY, FRANKLIN COUNTY, OHIO

Date: August 2, 2006
 Scale: 1" = 200'
 Job No: 2006-0588

I:\CMH\DATA1\PROJECT\20060588\DWG\60588BV2.DWG<11X17 PORTRAIT CANNON> - NO XREFS - LAST SAVED BY JMEYER [8/2/2006 4:36:49 PM] - PLOTTED BY JMEYER [8/2/2006 4:36:50 PM]

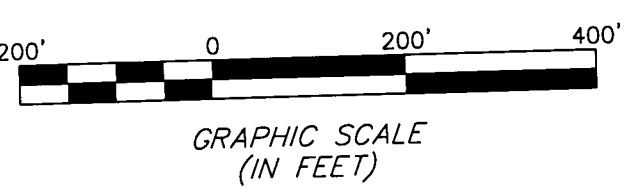


RECEIVED
 AUG 03 2006
 Franklin County Engineer
 Dean C. Ringle, PE, PS.

- = STONE FND.
 - = MON. FND.
 - = I.P. FND.
 - = I.P. SET
 - = MAG. NAIL FND.
 - = MAG. NAIL SET
 - ▲ = R.R. SPK. FND.
 - △ = R.R. SPK. SET
 - ◆ = P.K. NAIL FND.
- I.P. Set are 13/16" I.D. iron pipe with cap inscribed EMHT INC

Note:
 This survey was prepared using documents of record, prior plats of survey, and observable field evidence.

BASIS OF BEARINGS:
 Bearings are based on the Ohio State Plane Coordinate System—South Zone as per NAD83 (1986 adjustment). Control for bearings was from coordinates of monuments FRANK 25 and FRANK 125, having a bearing of South 92° 14' 00" East, established by the Franklin County Engineering Department, using Global Positioning System procedures and equipment.



By *James M. Pearsall* 8/2/06
 Professional Surveyor No. 7840

STATE OF OHIO
 JAMES M. PEARSALL
 7840
 REGISTERED PROFESSIONAL SURVEYOR