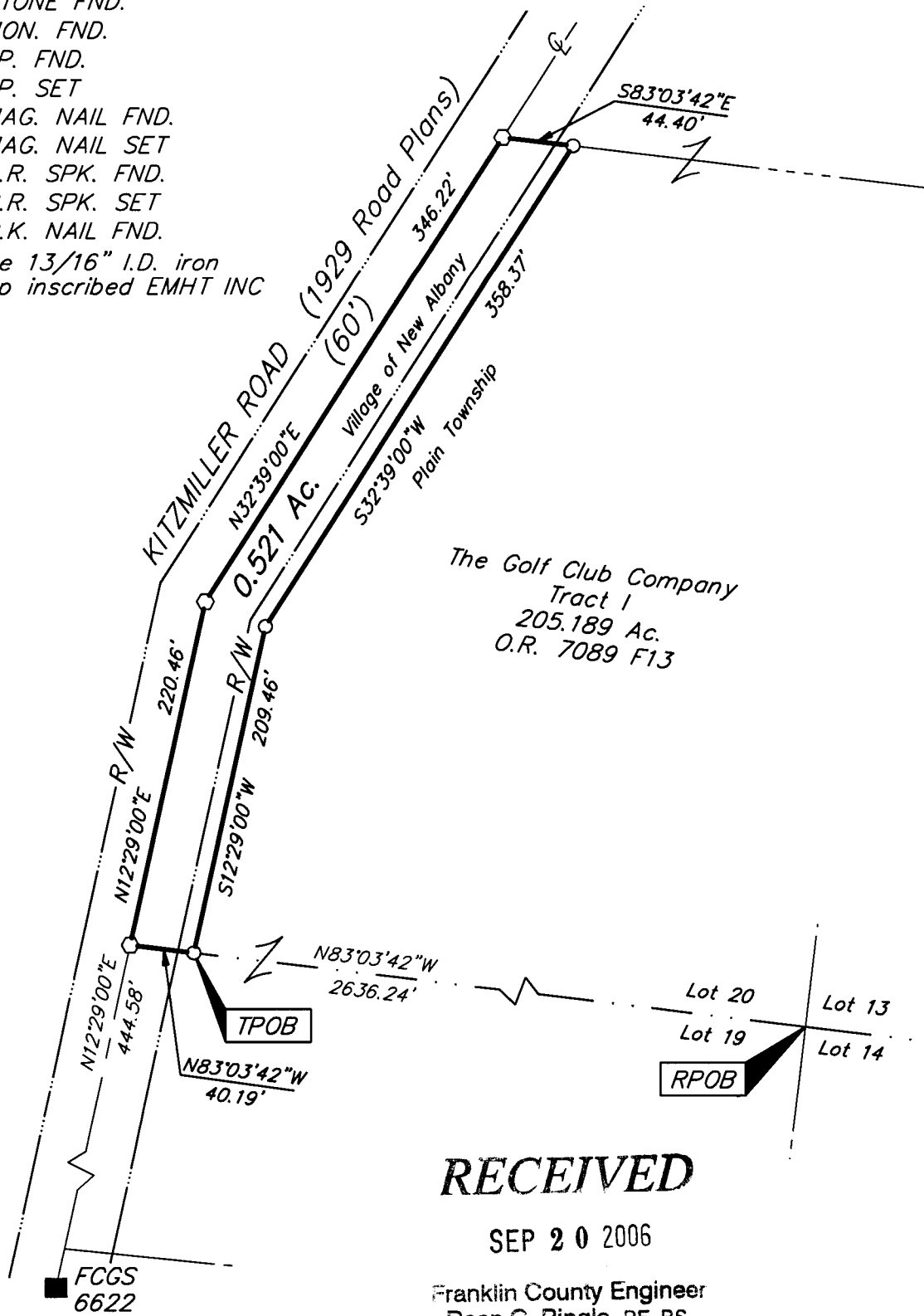


M C M X X V I

- = STONE FND.
- = MON. FND.
- = I.P. FND.
- = I.P. SET
- = MAG. NAIL FND.
- = MAG. NAIL SET
- ▲ = R.R. SPK. FND.
- △ = R.R. SPK. SET
- ◆ = P.K. NAIL FND.

I.P. Set are 13/16" I.D. iron pipe with cap inscribed EMHT INC



The Golf Club Company
 Tract 1
 205.189 Ac.
 O.R. 7089 F13

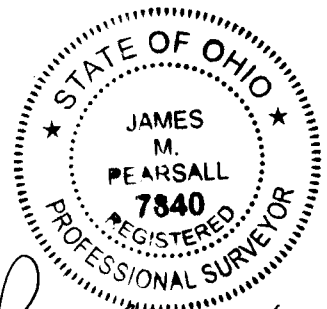
RECEIVED

SEP 20 2006

Franklin County Engineer
 Dean C. Ringle, PE, PS.

Note:
 This survey was prepared using documents of record,
 and prior plats of survey.

BASIS OF BEARINGS: Bearings are based on North
 32°39'00" East for a portion of the centerline of
 Kitzmiller Road, as shown in the deed of record in
 Official Record 7089 F13.



By James M. Pearsall 9/19/06
 Professional Surveyor No. 7840



GRAPHIC SCALE
 (IN FEET)

\\CMHDATA1\SURVEY\PROJECT\20040658\DWG\40658BV.DWG-LEGAL PORTRAITS - NO XREFS - LAST SAVED BY TWEBB [9/19/2006 3:14:06 PM] - PLOTTED BY TWEBB [9/19/2006 3:14:06 PM]