



Evans, Mechwart, Hambleton & Tilton, Inc.
 Engineers • Surveyors • Planners • Scientists
 5500 New Albany Road, Columbus, OH 43054
 Phone: 614.775.4500 Fax: 614.775.4800

SURVEY OF ACREAGE PARCEL
LOT 20, QUARTER TOWNSHIP 4, TOWNSHIP 2, RANGE 16
UNITED STATES MILITARY LANDS

VILLAGE OF NEW ALBANY & TOWNSHIP OF PLAIN, FRANKLIN COUNTY, OHIO

Date: September 19, 2006

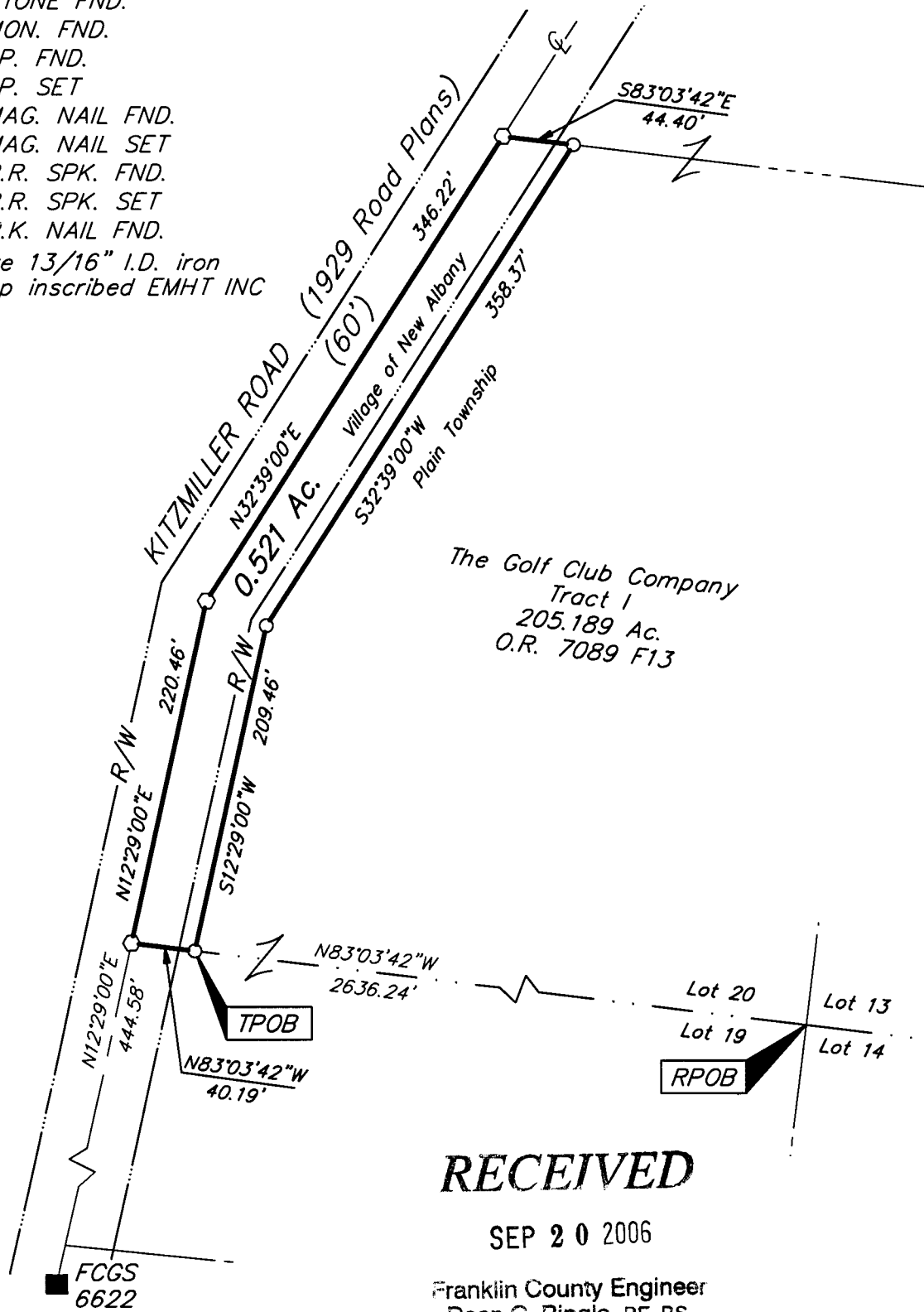
Job No. 2004-0658

Scale: 1" = 100'

M C M X X V I

- = STONE FND.
- = MON. FND.
- = I.P. FND.
- = I.P. SET
- = MAG. NAIL FND.
- = MAG. NAIL SET
- ▲ = R.R. SPK. FND.
- △ = R.R. SPK. SET
- ◆ = P.K. NAIL FND.

I.P. Set are 13/16" I.D. iron pipe with cap inscribed EMHT INC



RECEIVED

SEP 20 2006

Franklin County Engineer
 Dean C. Ringle, P.E., P.S.

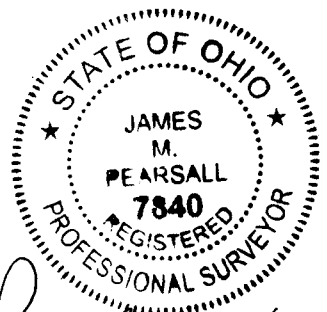
Note:

This survey was prepared using documents of record, and prior plats of survey.

BASIS OF BEARINGS: Bearings are based on North 32°39'00" East for a portion of the centerline of Kitzmiller Road, as shown in the deed of record in Official Record 7089 F13.



GRAPHIC SCALE (IN FEET)



By *James M. Pearsall* 9/19/06
 Professional Surveyor No. 7840

\\CMHDATA1\SURVEY\PROJECT\20040658\DWG\40658BV.DWG-LEGAL PORTRAIT> - NO XREFS - LAST SAVED BY TWEBB [9/19/2006 3:14:06 PM] - PLOTTED BY TWEBB [9/19/2006 3:14:06 PM]