

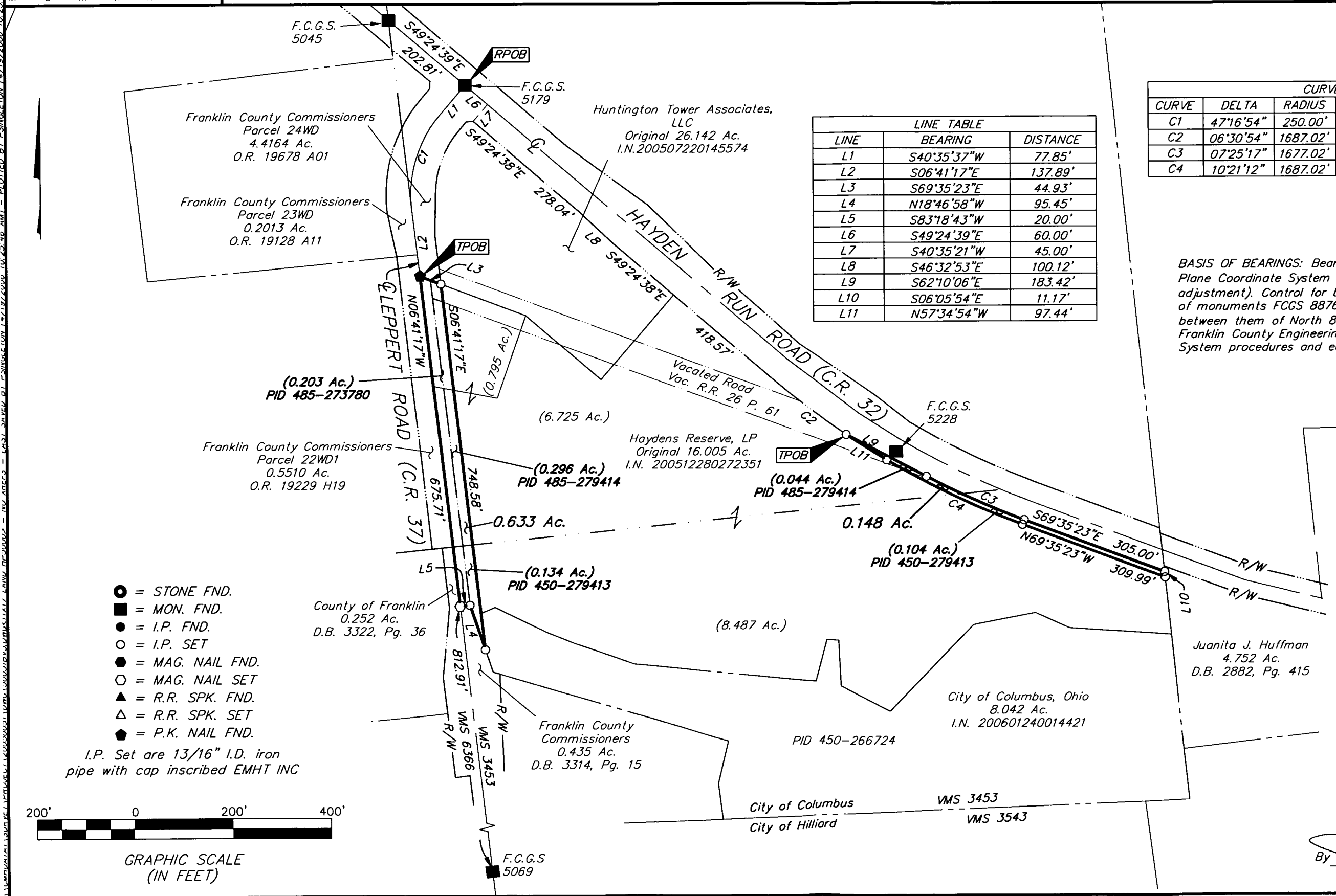
SURVEY OF ACREAGE PARCELS
VIRGINIA MILITARY SURVEY No. 3453
CITY OF COLUMBUS, FRANKLIN COUNTY, OHIO

Date: May 20, 2005

Scale: 1" = 200'

Job No: 2005-0051

Revised: November 22, 2005
 Revised: April 20, 2006



LINE	BEARING	DISTANCE
L1	S40°35'37"W	77.85'
L2	S06°41'17"E	137.89'
L3	S69°35'23"E	44.93'
L4	N18°46'58"W	95.45'
L5	S83°18'43"W	20.00'
L6	S49°24'39"E	60.00'
L7	S40°35'21"W	45.00'
L8	S46°32'53"E	100.12'
L9	S62°10'06"E	183.42'
L10	S06°05'54"E	11.17'
L11	N57°34'54"W	97.44'

CURVE	DELTA	RADIUS	CH BRG	CH	ARC
C1	47°16'54"	250.00'	S16°57'10"W	200.50'	206.31'
C2	06°30'54"	1687.02'	S52°40'09"E	191.72'	191.83'
C3	07°25'17"	1677.02'	S65°52'45"E	217.07'	217.22'
C4	10°21'12"	1687.02'	N64°24'47"W	304.43'	304.84'

BASIS OF BEARINGS: Bearings are based on the Ohio State Plane Coordinate System - South Zone per NAD83 (1986 adjustment). Control for bearings was derived from coordinates of monuments FCGS 8876 & FCGS 2221, having a bearing between them of North 88°53'20" East, established by the Franklin County Engineering Department using Global Positioning System procedures and equipment.

- = STONE FND.
- = MON. FND.
- = I.P. FND.
- = I.P. SET
- = MAG. NAIL FND.
- = MAG. NAIL SET
- ▲ = R.R. SPK. FND.
- △ = R.R. SPK. SET
- ◆ = P.K. NAIL FND.

I.P. Set are 13/16" I.D. iron pipe with cap inscribed EMHT INC



GRAPHIC SCALE (IN FEET)



By 4/27/06
 Professional Surveyor No. 8250