



Evans, Mechwart, Hambleton & Tilton, Inc.
 Engineers • Surveyors • Planners • Scientists
 5500 New Albany Road, Columbus, OH 43054
 Phone: 614.775.4500 Fax: 614.775.4800

SURVEY OF ACREAGE PARCEL
SECTIONS 24 & 25, TOWNSHIP 11, RANGE 21
CONGRESS LANDS

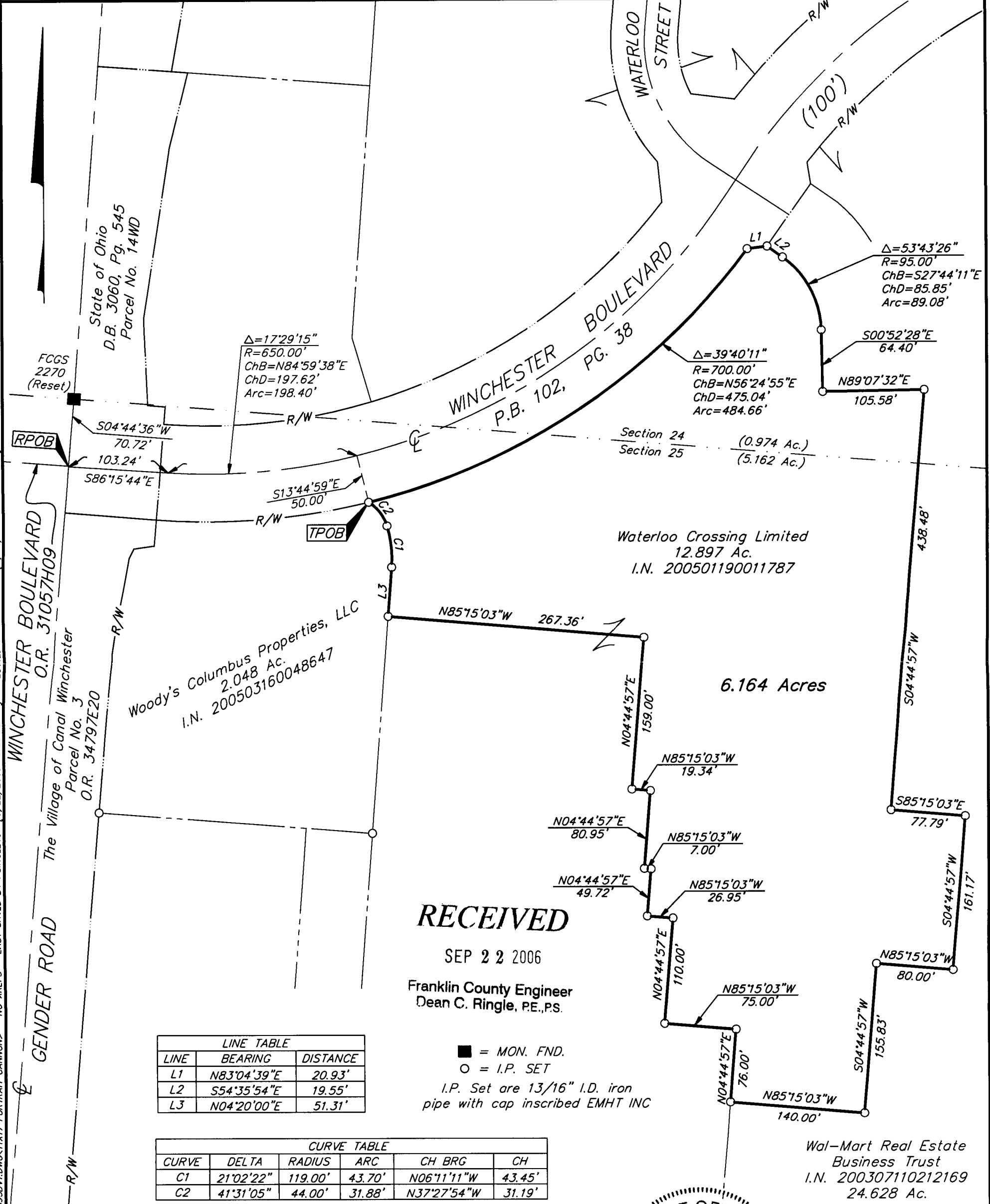
VILLAGE OF CANAL WINCHESTER, FRANKLIN COUNTY, OHIO

Date: September 22, 2006

Scale: 1" = 100'

Job No: 2006-0895

M C M X X V I



LINE TABLE		
LINE	BEARING	DISTANCE
L1	N83°04'39"E	20.93'
L2	S54°35'54"E	19.55'
L3	N04°20'00"E	51.31'

CURVE TABLE					
CURVE	DELTA	RADIUS	ARC	CH BRG	CH
C1	21°02'22"	119.00'	43.70'	N06°11'11"W	43.45'
C2	41°31'05"	44.00'	31.88'	N37°27'54"W	31.19'

RECEIVED
 SEP 22 2006
 Franklin County Engineer
 Dean C. Ringle, PE., PS.

■ = MON. FND.
 ○ = I.P. SET
 I.P. Set are 13/16" I.D. iron pipe with cap inscribed EMHT INC

BASIS OF BEARINGS: Bearings are based on the Ohio State Plane Coordinate System per NAD83 South Zone (1986 Adjustment). Control for bearings was from coordinates of monuments FCGS 2270 (Reset) & FCGS 4452, having a bearing of North 04° 44' 36" East, as established by the Franklin County Engineering Department.



GRAPHIC SCALE (IN FEET)



By *Heather L. King* 9/22/06
 Professional Surveyor No. 8307

\\CAMHDA1\SURVEY\PROJECT\20060895\DWG\60895BV1.DWG<11X17 PORTRAIT CANNON> - NO XREFS - LAST SAVED BY PSINGLETON [9/22/2006 12:23:12 PM] - PLOTTED BY PSINGLETON [9/22/2006 12:23:13 PM]