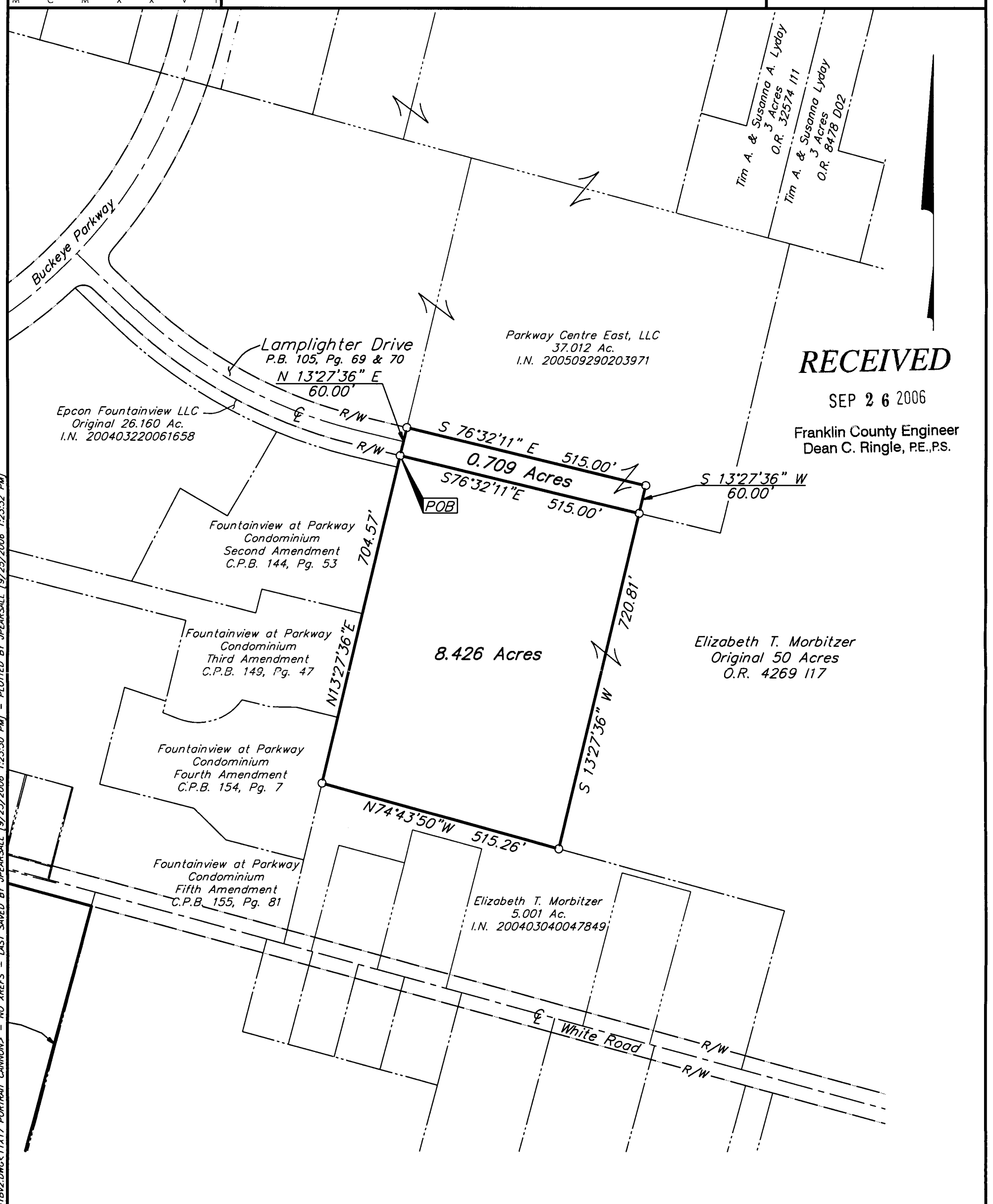


**SURVEY OF ACREAGE PARCEL**  
**VIRGINIA MILITARY SURVEY NO. 469**  
 TOWNSHIP OF JACKSON, FRANKLIN COUNTY, OHIO

Date: September 25, 2006  
 Scale: 1" = 200'  
 Job No: 2006-1851



**RECEIVED**  
 SEP 26 2006  
 Franklin County Engineer  
 Dean C. Ringle, P.E., P.S.

\\CMHDATA\1\SURVEY\PROJECT\20061851\DWG\61851BV2.DWG<11X17 PORTRAIT CANNON> - NO XREFS - LAST SAVED BY JPEARSALL [9/25/2006 1:23:30 PM] - PLOTTED BY JPEARSALL [9/25/2006 1:23:32 PM]

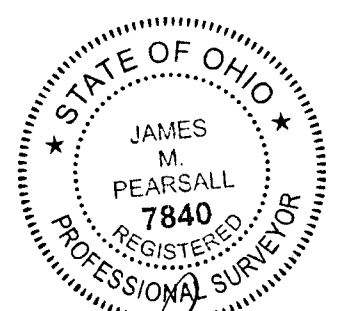
**BASIS OF BEARINGS:** Bearings shown hereon are based on the Ohio State Plane Coordinate System as per NAD 83 South Zone (1986 Adjustment). Control for bearings was from coordinates of monuments Frank 25 and Frank 125, having a bearing of South 87° 45' 00" East, established by the Franklin County Engineering Department, using Global Positioning System procedures and equipment



GRAPHIC SCALE  
(IN FEET)

- = STONE FND.
- = MON. FND.
- = I.P. FND.
- = I.P. SET
- = MAG. NAIL FND.
- = MAG. NAIL SET
- ▲ = R.R. SPK. FND.
- △ = R.R. SPK. SET
- ◆ = P.K. NAIL FND.

I.P. Set are 13/16" I.D. iron pipe with cap inscribed EMHT INC



By *James M. Pearsall* 9/25/06  
 Professional Surveyor No. 7840