

RECEIVED

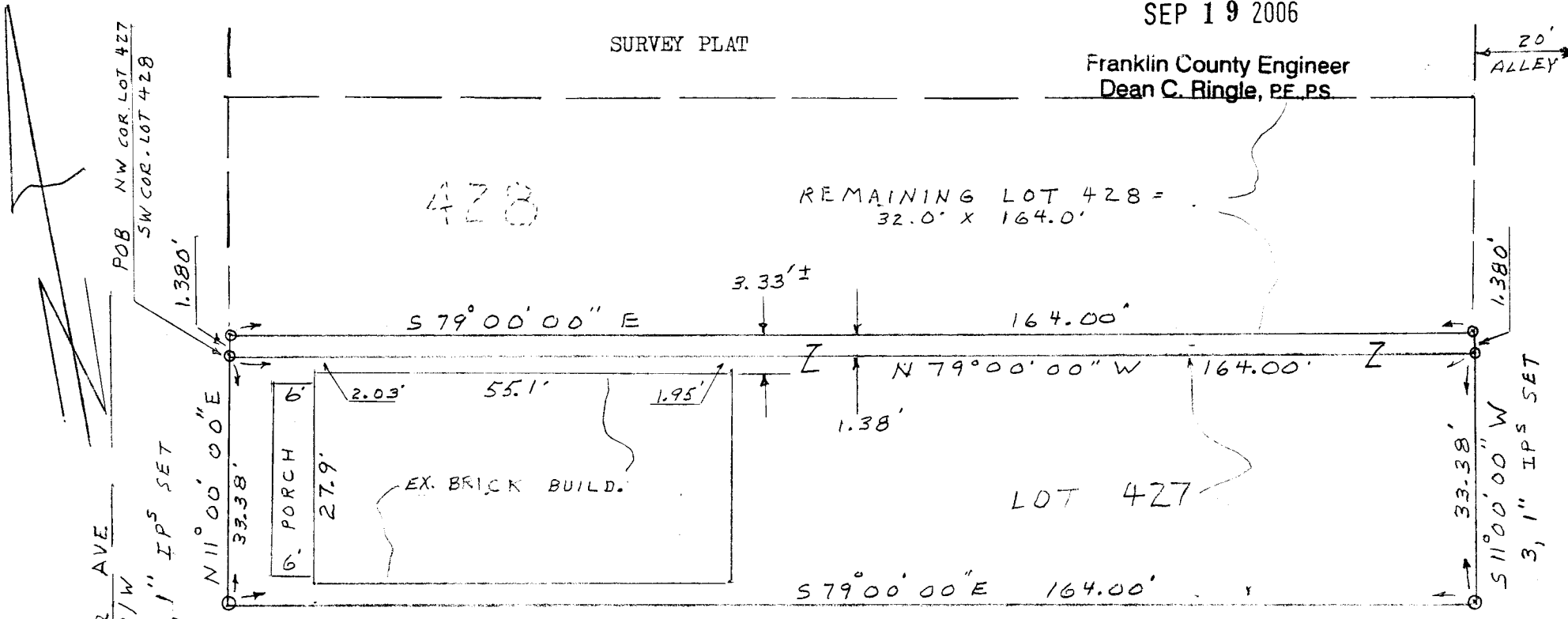
SEP 19 2006

Franklin County Engineer
Dean C. Ringle, PE, PS

SCALE: 1" = 20'

SURVEY PLAT

20'
ALLEY



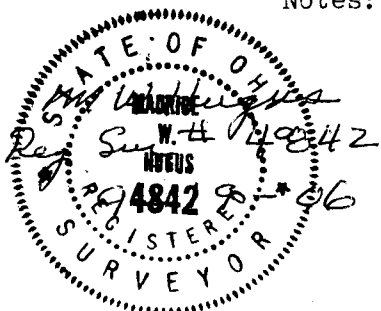
Being all of Lot 427 and a 1.380 foot wide strip of ground off of the entire South side of Lot 428 and said 1.380 foot wide strip of ground being 0.00519 acres more or less and being out of the Miller, Joyce, Gray and Others Subdivision as the same is numbered and delineated upon therecorded plat thereof in Plat Book 4, Pages 5-8, Records Office, Franklin County, Ohio (formerly incorrectly referred to as Plat Book 7, pages 212 and 213 in Deed referenced 200207120170965 as granted by James A. Karnes, Sheriff of Franklin County, Ohio, and presently owned by B.W. Eddy Trust.

Surveyed for ; J.R. Haller by : M.W. Hugus - Reg. Sur. # 4842
 o = heavy wall 1" iron pipe by 30" long pipe

9 -1-06
 Scale: 1" = 20'

Notes:

1. Bearing N 79° 00' 00" W established by use of a transit compass on North line of LOT 427;
2. This plat represents the minimum standards as per code chapter 4733-37 ;
3. Yellow caps on iron pins per M.W. Hugus' NAME.
4. This plat prepared from an actual field survey by M.W. Hugus
 Reg. Sur. # 4842 .
5. Yellow caps have a 1" long stem, being 1" diameter at the top and one half inch at the end of the stem.



ST. CLAIR AVE
 60' R/W
 3, 1" IPS SET
 30'
 2ND AVE