

\\CMH\DATA1\SURVEY\PROJECT\20060588\DWG\60588BVI.DWG<LEGAL LAND> - NO XREFS - LAST SAVED BY JMC FARLAND [4/21/2006 2:50:10 PM] - PLOTTED BY JMC FARLAND [4/21/2006 2:50:12 PM]



Evans, Mechwart, Hambleton & Tilton, Inc.
 Engineers • Surveyors • Planners • Scientists
 5500 New Albany Road, Columbus, OH 43054
 Phone: 614.775.4500 Fax: 614.775.4800

M C M X X V I

SURVEY OF ACREAGE PARCEL

SURVEY No. 478

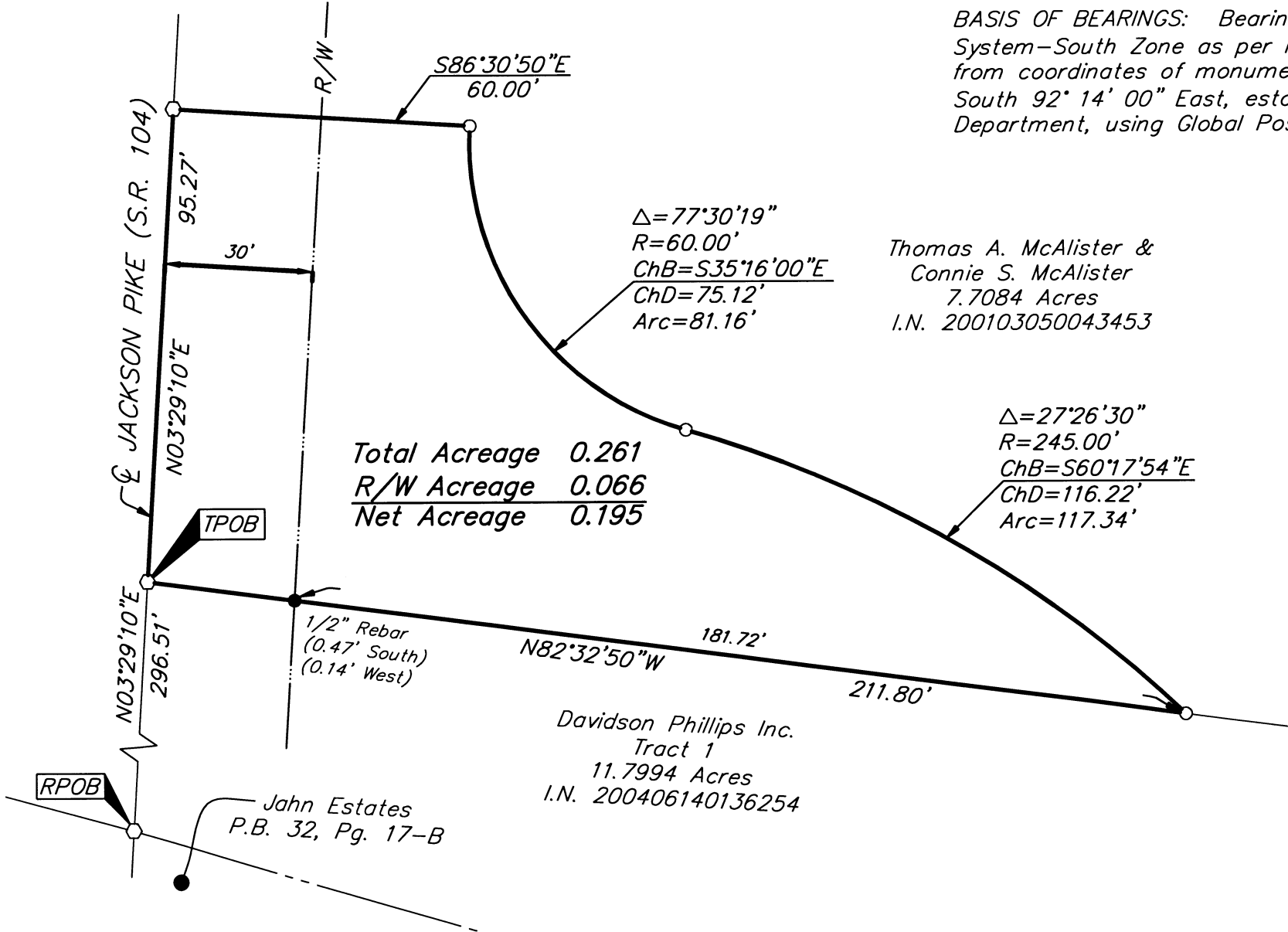
VIRGINIA MILITARY DISTRICT

CITY OF COLUMBUS, FRANKLIN COUNTY, OHIO

Date: April 20, 2006

Scale: 1" = 30'

Job No: 2006-0588

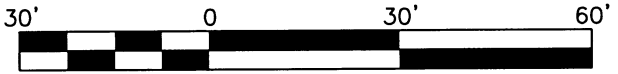


BASIS OF BEARINGS: Bearings are based on the Ohio State Plane Coordinate System—South Zone as per NAD83 (1986 adjustment). Control for bearings was from coordinates of monuments FRANK 25 & FRANK 125, having a bearing of South 92° 14' 00" East, established by the Franklin County Engineering Department, using Global Positioning System procedures and equipment.

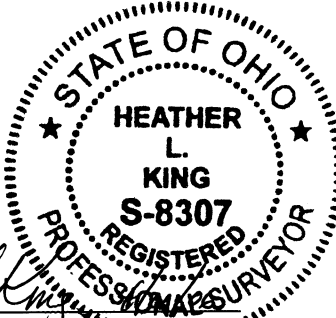
Thomas A. McAlister &
 Connie S. McAlister
 7.7084 Acres
 I.N. 200103050043453

- = STONE FND.
- = MON. FND.
- = I.P. FND.
- = I.P. SET
- = MAG. NAIL FND.
- = MAG. NAIL SET
- ▲ = R.R. SPK. FND.
- △ = R.R. SPK. SET
- ◆ = P.K. NAIL FND.

I.P. Set are 13/16" I.D. iron pipe with cap inscribed EMHT INC



GRAPHIC SCALE (IN FEET)



By *Heather L. King*
 Professional Surveyor No. 8507