

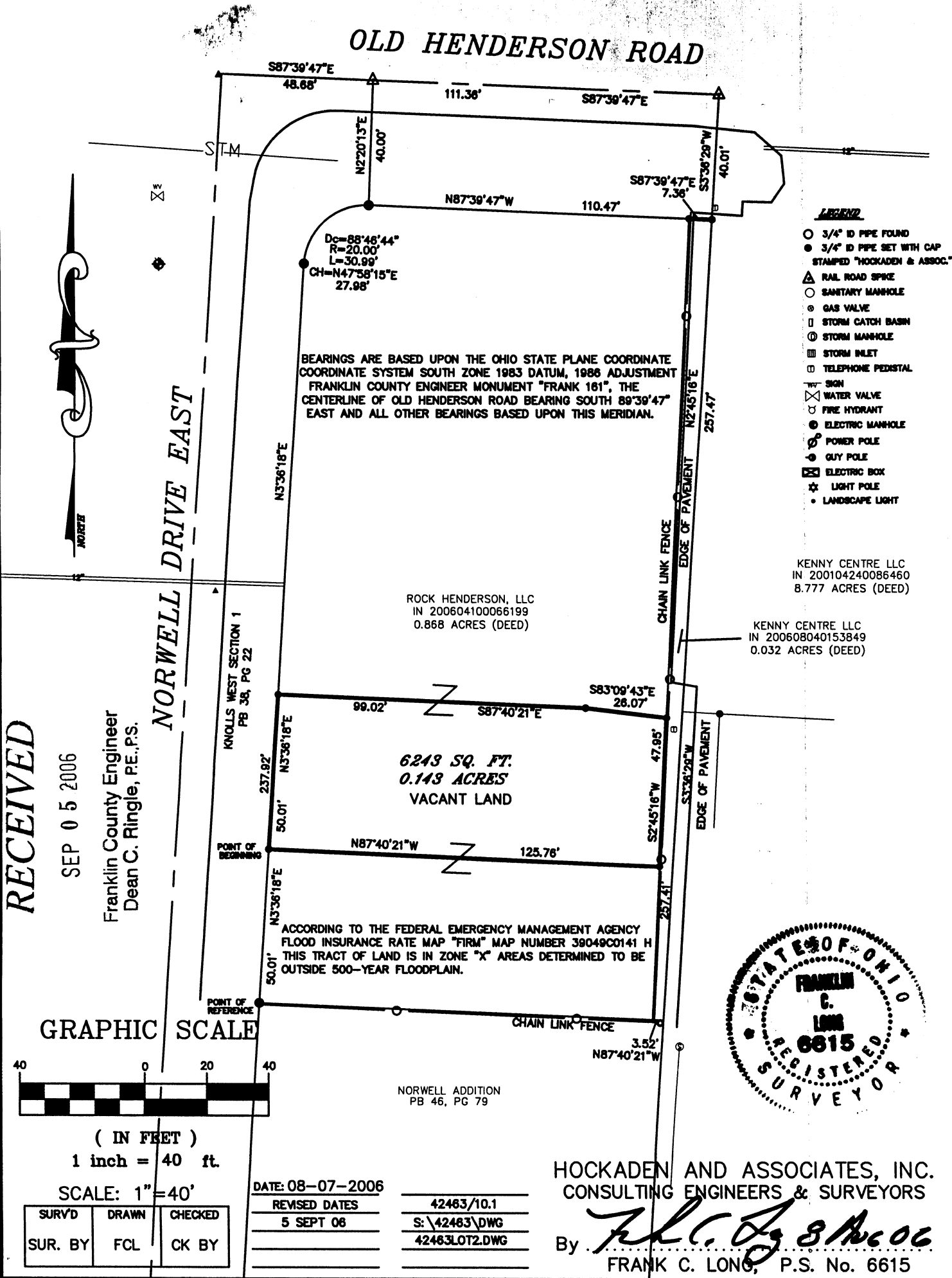


PREPARED BY:
HOCKADEN AND ASSOCIATES, INC.
 Consulting Engineers & Surveyors
 883 North Cassady Avenue
 Columbus, Ohio 43219
 Telephone: (614) 252-0993
 Fax: (614) 252-0444

BOUNDARY SURVEY

SITUATED IN THE STATE OF OHIO, COUNTY OF FRANKLIN, CITY OF COLUMBUS,
 BEING IN SECTION 1, TOWNSHIP 1 NORTH, RANGE 19 WEST,
 UNITED STATES MILITARY LANDS.

OLD HENDERSON ROAD



- LEGEND**
- 3/4" ID PIPE FOUND
 - 3/4" ID PIPE SET WITH CAP STAMPED "HOCKADEN & ASSOC."
 - ▲ RAIL ROAD SPIKE
 - SANITARY MANHOLE
 - ⊙ GAS VALVE
 - STORM CATCH BASIN
 - ⊕ STORM MANHOLE
 - ⊖ STORM INLET
 - ⊞ TELEPHONE PEDISTAL
 - ⊞ SIGN
 - ⊞ WATER VALVE
 - ⊞ FIRE HYDRANT
 - ⊞ ELECTRIC MANHOLE
 - ⊞ POWER POLE
 - ⊞ GUY POLE
 - ⊞ ELECTRIC BOX
 - ⊞ LIGHT POLE
 - ⊞ LANDSCAPE LIGHT

BEARINGS ARE BASED UPON THE OHIO STATE PLANE COORDINATE COORDINATE SYSTEM SOUTH ZONE 1983 DATUM, 1986 ADJUSTMENT FRANKLIN COUNTY ENGINEER MONUMENT "FRANK 161", THE CENTERLINE OF OLD HENDERSON ROAD BEARING SOUTH 89°39'47" EAST AND ALL OTHER BEARINGS BASED UPON THIS MERIDIAN.

ROCK HENDERSON, LLC
 IN 200604100066199
 0.868 ACRES (DEED)

KENNY CENTRE LLC
 IN 200104240086460
 8.777 ACRES (DEED)

KENNY CENTRE LLC
 IN 200608040153849
 0.032 ACRES (DEED)

6243 SQ. FT.
 0.143 ACRES
 VACANT LAND

ACCORDING TO THE FEDERAL EMERGENCY MANAGEMENT AGENCY FLOOD INSURANCE RATE MAP "FIRM" MAP NUMBER 39049C0141 H THIS TRACT OF LAND IS IN ZONE "X" AREAS DETERMINED TO BE OUTSIDE 500-YEAR FLOODPLAIN.

NORWELL ADDITION
 PB 46, PG 79



RECEIVED

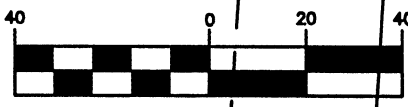
SEP 05 2006

Franklin County Engineer
 Dean C. Ringle, P.E., P.S.

NORWELL DRIVE EAST

KNOLLS WEST SECTION 1
 PB 36, PG 22

GRAPHIC SCALE



(IN FEET)
 1 inch = 40 ft.

SCALE: 1" = 40'

SURV'D	DRAWN	CHECKED
SUR. BY	FCL	CK BY

DATE: 08-07-2006

REVISED DATES	42463/10.1
5 SEPT 06	S:\42463\DWG
	42463LOT2.DWG

HOCKADEN AND ASSOCIATES, INC.
 CONSULTING ENGINEERS & SURVEYORS

By *Frank C. Long*
 FRANK C. LONG, P.S. No. 6615