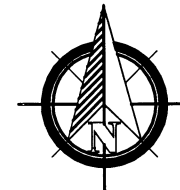
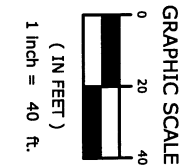




635 Brookside Boulevard  
 Westerville, OH 43081  
 Contact: Dave Chiesa  
 614-818-4900 ext. 225  
 Fax: 614-818-4902  
 www.mecompanies.com

**RIGHT-OF-WAY  
 DEDICATION EXHIBIT**  
 GENDER ROAD & REFUGEE ROAD  
 COLUMBUS, OHIO



**RECEIVED**

SEP 11 2006

Franklin County Engineer  
 Dean C. Ringle, P.E., P.S.

**GENDER ROAD**

**REFERENCE POINT**

**TRUE PLACE OF BEGINNING**

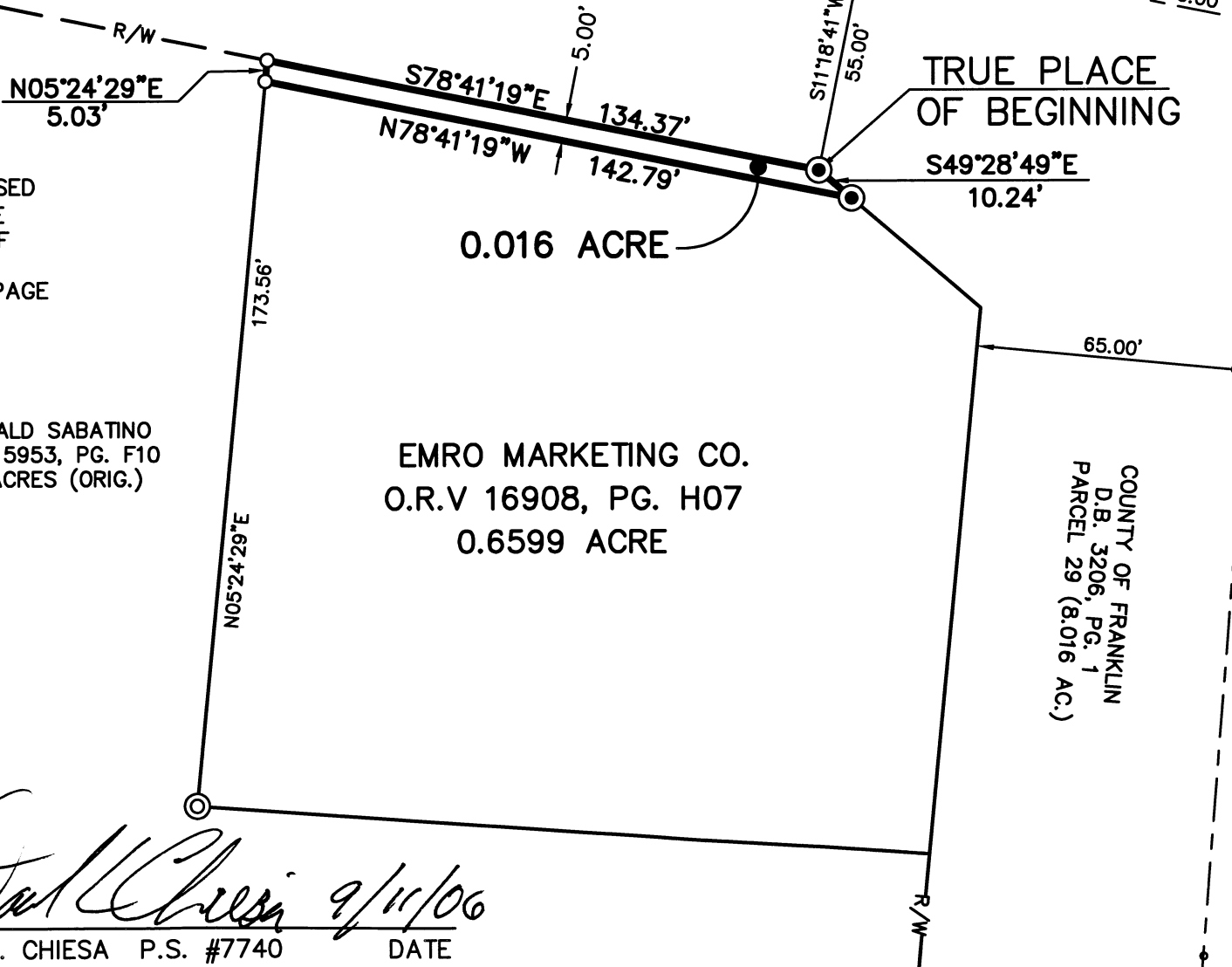
**REFUGEE ROAD**

COUNTY OF FRANKLIN  
 D.B. 3206, PG. 1  
 PARCEL 29 (0.643 AC.)

COUNTY OF FRANKLIN  
 D.B. 3206, PG. 1  
 PARCEL 29 (8.016 AC.)

**EMRO MARKETING CO.**  
 O.R.V 16908, PG. H07  
 0.6599 ACRE

0.016 ACRE



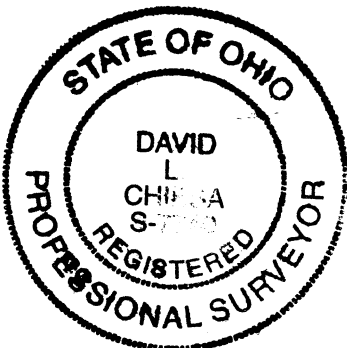
**BEARING REFERENCE**

BEARINGS SHOWN HEREON ARE BASED ON SOUTH 78°41'19" EAST FOR THE SOUTHERLY RIGHT-OF-WAY LINE OF REFUGEE ROAD AS REFERENCE IN OFFICIAL RECORD VOLUME 16908, PAGE H07.

**LEGEND**

- ⊙ IRON PIN FOUND
- ⊙ IRON PIN SET  
1" O.D. PIPE 30" LONG  
"M-E COMPANIES/S-6872"
- MAG NAIL SET

P. RONALD SABATINO  
 O.R.V. 15953, PG. F10  
 5.791 ACRES (ORIG.)



BY *David Chiesa* 9/11/06  
 DAVID L. CHIESA P.S. #7740 DATE