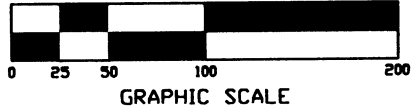
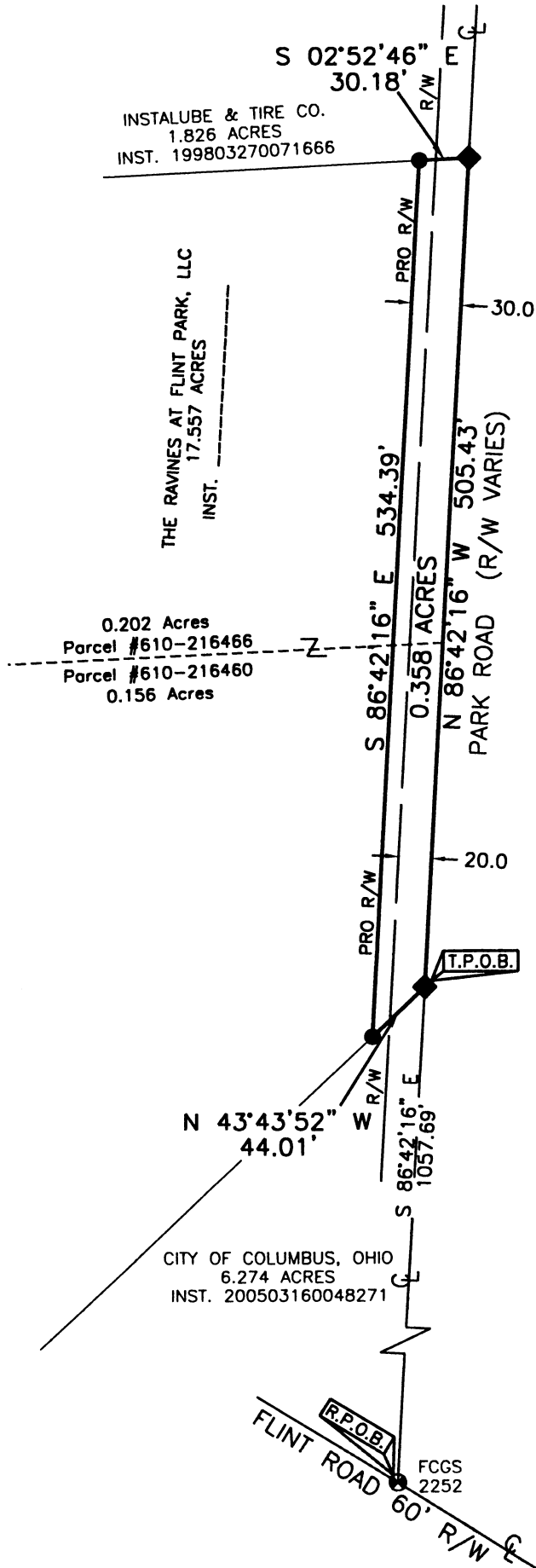




# Civil & Environmental Consultants, Inc.

8740 Orion Place, Suite 100 Columbus, Oh. 43240  
 (614) 540-6633 (888)598-6808 FAX(614)540-6638  
 CHICAGO, IL. • CINCINNATI, OH. • EXPORT, PA • INDIANAPOLIS, IN.  
 NASHVILLE, TN. • PITTSBURGH, PA. • ST. LOUIS, MO.

## Right-of-Way Dedication



### Situate

Situate in the State of Ohio, County of Franklin, City of Columbus, lying in, Section 2, Township 2, Range 18, United States Military District

### Basis of Bearings

The bearings shown above are determined between Franklin County Monuments N64-94 and N67-94 based on the State Plane Coordinate System, Ohio, South Zone, NAD 83 (1986 adjustment), which said monuments having a bearing of North 86°19'36" West between them.

### Surveyor's Certificate

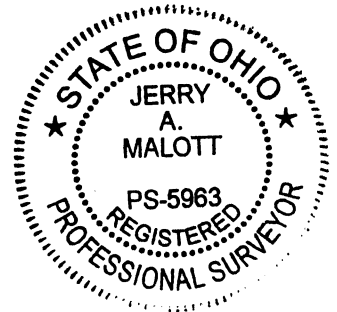
This exhibit was based on an actual field survey by Civil & Environmental Consultants, Inc. in April, 2006.

### Boundary Survey Note

This plat constitutes a boundary survey as set forth in the minimum standards for boundary surveying in the State of Ohio, Administrative Code Chapter 4733-37 and promulgated by the Board of Registration for Professional Engineers and Surveyors of the State of Ohio pursuant to Chapter 4733.

### Legend of Symbols & Abbreviations

- ◆ Set Railroad Spike  
Set 3/4" Iron Pipe,  
30' in Length with  
an ID Cap stamped  
"CEC PROP COR"
- FCGS Found



*Jerry A. Malott* 9-08-06  
 Jerry A. Malott P.S. 5963

REVISION RECORD		DRAWN BY: NW	JOB NUMBER 051229
DATE	DESCRIPTION	FIELD WORK BY: TS / SR	
8-11-06	UPDATED OWNER INFO.	DATE: 6-01-06	
9-8-06	Parcel Number Added JB	SCALE: 1" = 100'	