

EMHT

Evans, Mechwart, Hambleton & Tilton, Inc.
Engineers • Surveyors • Planners • Scientists
5500 New Albany Road, Columbus, OH 43054
Phone: 614.775.4500 Fax: 614.775.4800

M C M X X V I

SURVEY OF ACREAGE PARCEL

SECTION 14, QUARTER TOWNSHIP 2, TOWNSHIP 2, RANGE 16

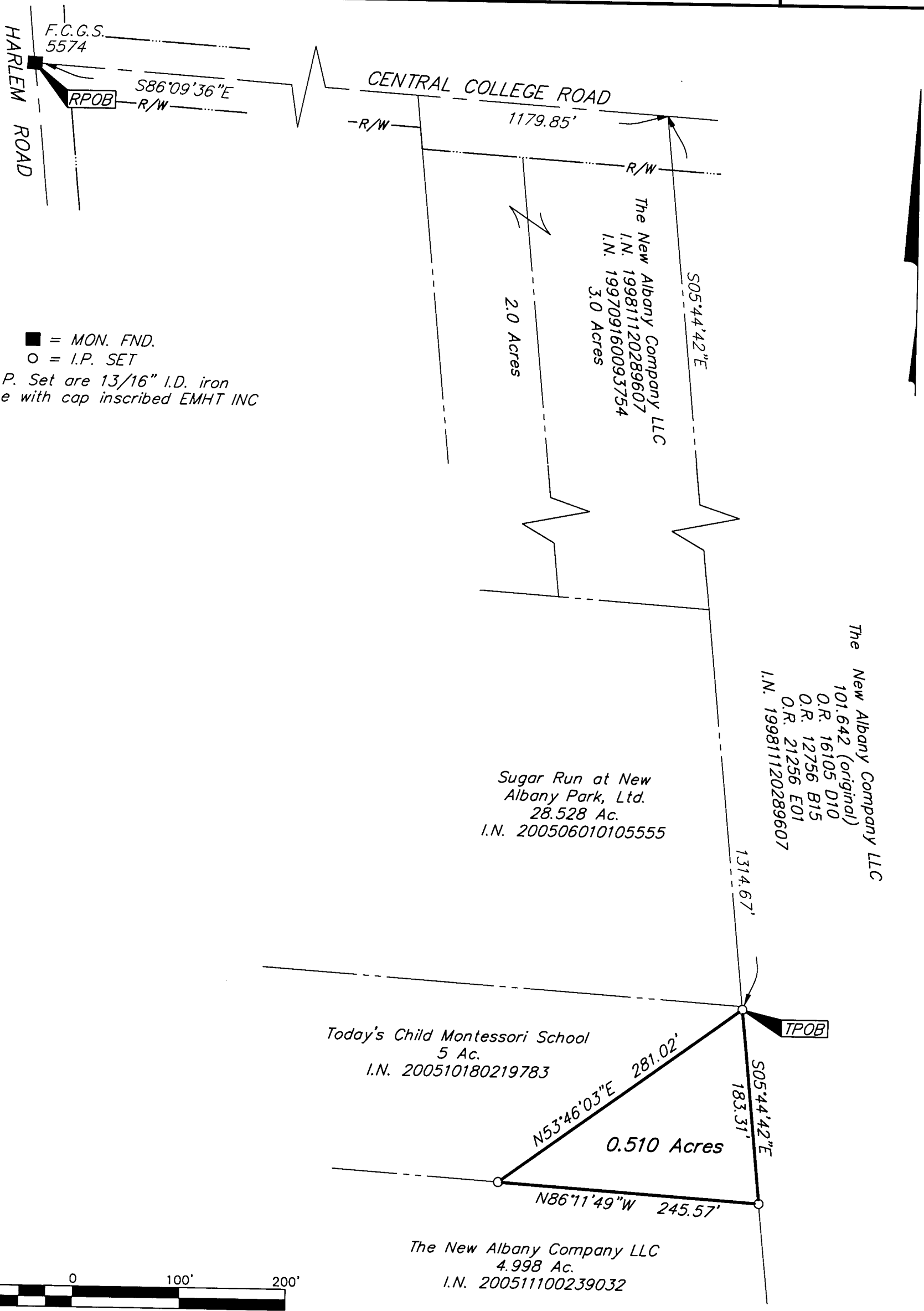
UNITED STATES MILITARY LANDS

CITY OF COLUMBUS, FRANKLIN COUNTY, OHIO

Date: August 10, 2006

Scale: 1" = 100'

Job No: 2006-1695



[C:\MHDATA1\SURVEY\PROJECT\20061695\DWG\16955V.DWG<11X17 PORTRAIT CANNON> - NO XREFS - LAST SAVED BY HKING [8/10/2006 9:48:14 AM] - PLOTTED BY HKING [8/10/2006 9:48:14 AM]



GRAPHIC SCALE (IN FEET)

RECEIVED

AUG 10 2006

Franklin County Engineer
Dean C. Ringle, P.E., P.S.



By *Heather L. King* 8/10/06
Professional Surveyor No. 8307

BASIS OF BEARINGS: Bearings are based on the Ohio State Plane Coordinate System as per NAD83 South Zone (1986 Adjustment). Control for bearings was from coordinates of monuments Frank 5574 and Frank 5113, with Central College Road having a bearing of South 86° 09' 36" East, established by the Franklin County Engineering Department, using Global Positioning System procedures and equipment.