

RECEIVED

AUG 04 2006

Franklin County Engineer
Dean C. Ringle, P.E., P.S.

LEGEND

- IPF Iron Pin Found
- IPS Iron Pin Set
- ▲ RRSF Railroad Spike Found
- △ RRSS Railroad Spike Set
- PKNF PK Nail Found
- MON Monument Box Found
- CMF Concrete Right-of-way Monument Found
- STONE Stone Found



SCALE IN FEET

EXHIBIT OF
**0.946 ACRE FOR
RIGHT-OF-WAY**

LYING IN

STATE OF OHIO, FRANKLIN COUNTY, CITY OF COLUMBUS
SECTION 4, TOWNSHIP 2, RANGE 17
UNITED STATES MILITARY LANDS

Scale: 1 inch = 80 Feet

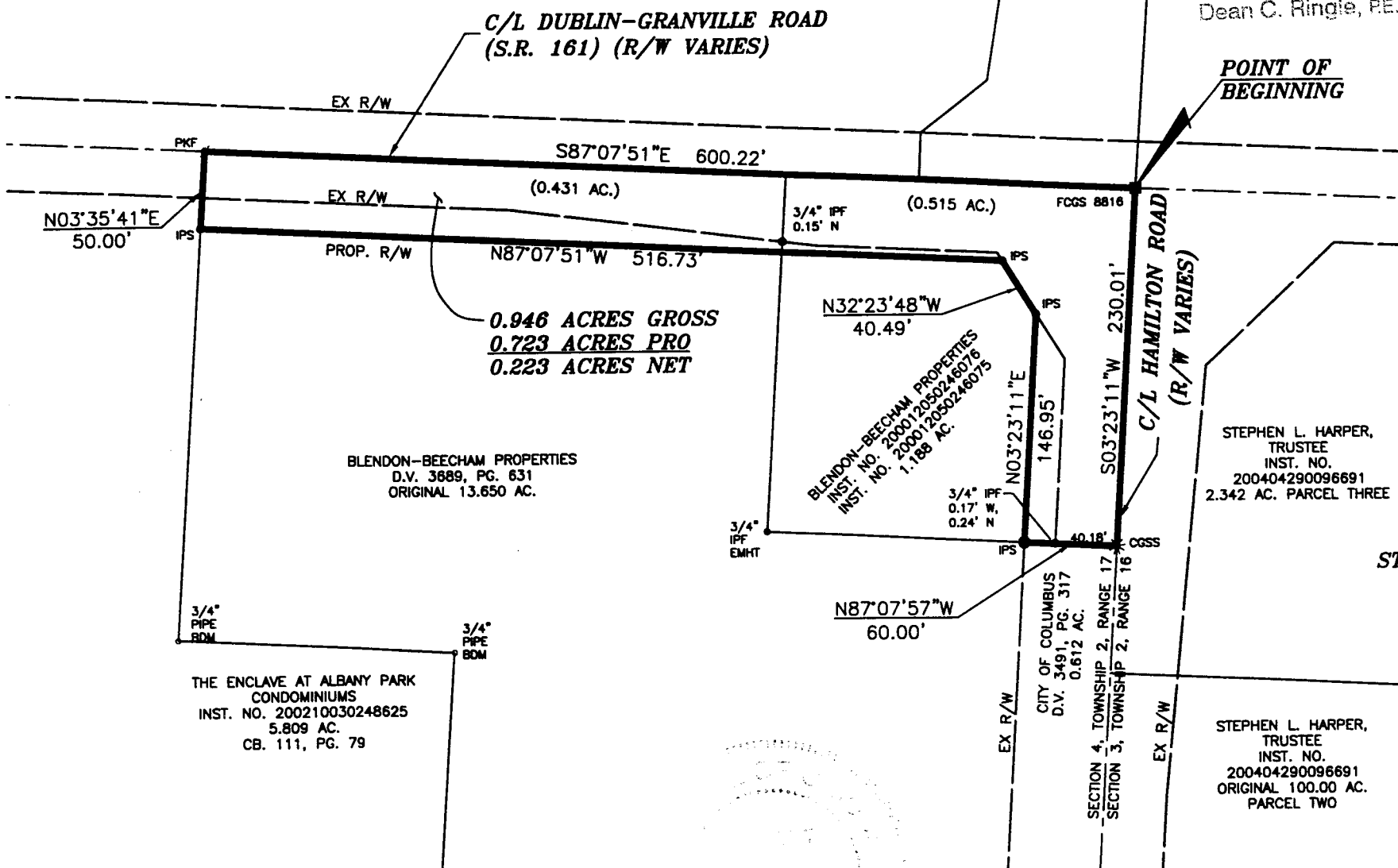
PREPARED BY:
R.D.Zande & Associates

1500 LAKE SHORE DRIVE
SUITE 100
COLUMBUS, OHIO 43204

(614) 486-4383 1-800-340-2743
FAX (614) 486-4387

COPYRIGHT © 2006 R.D. ZANDE & ASSOCIATES, INC.

ALL RIGHTS RESERVED. ALL REPORTS, PLANS, SPECIFICATIONS, COMPUTER FILES, FIELD DATA, NOTES, DOCUMENTS, AND OTHER ITEMS PREPARED BY R. D. ZANDE & ASSOCIATES, INC. ("ZANDE") ARE INSTRUMENTS OF SERVICE AND REMAIN ITS PROPERTY. THE USE OF THESE ITEMS BY ZANDE'S CLIENT IS SUBJECT TO ALL OF THE TERMS, CONDITIONS AND LIMITATIONS SET FORTH IN THE AGREEMENT BETWEEN SUCH CLIENT AND ZANDE. ADDITIONAL USE IS PROHIBITED WITHOUT THE WRITTEN CONSENT OF ZANDE.



BASIS OF BEARINGS:

Bearings shown hereon are based on the bearing North 03° 12' 47" East for the centerline of Hamilton Road between Franklin County Geodetic Control Monument 8814 and 8815 Ohio State Plane Coordinate System, South Zone, 1986 Adjustment

R. D. ZANDE & ASSOCIATES, INC.

Robert J. Zande 06/15/06
ROBERT J. ZANDE DATE
Professional Surveyor No. S-8053