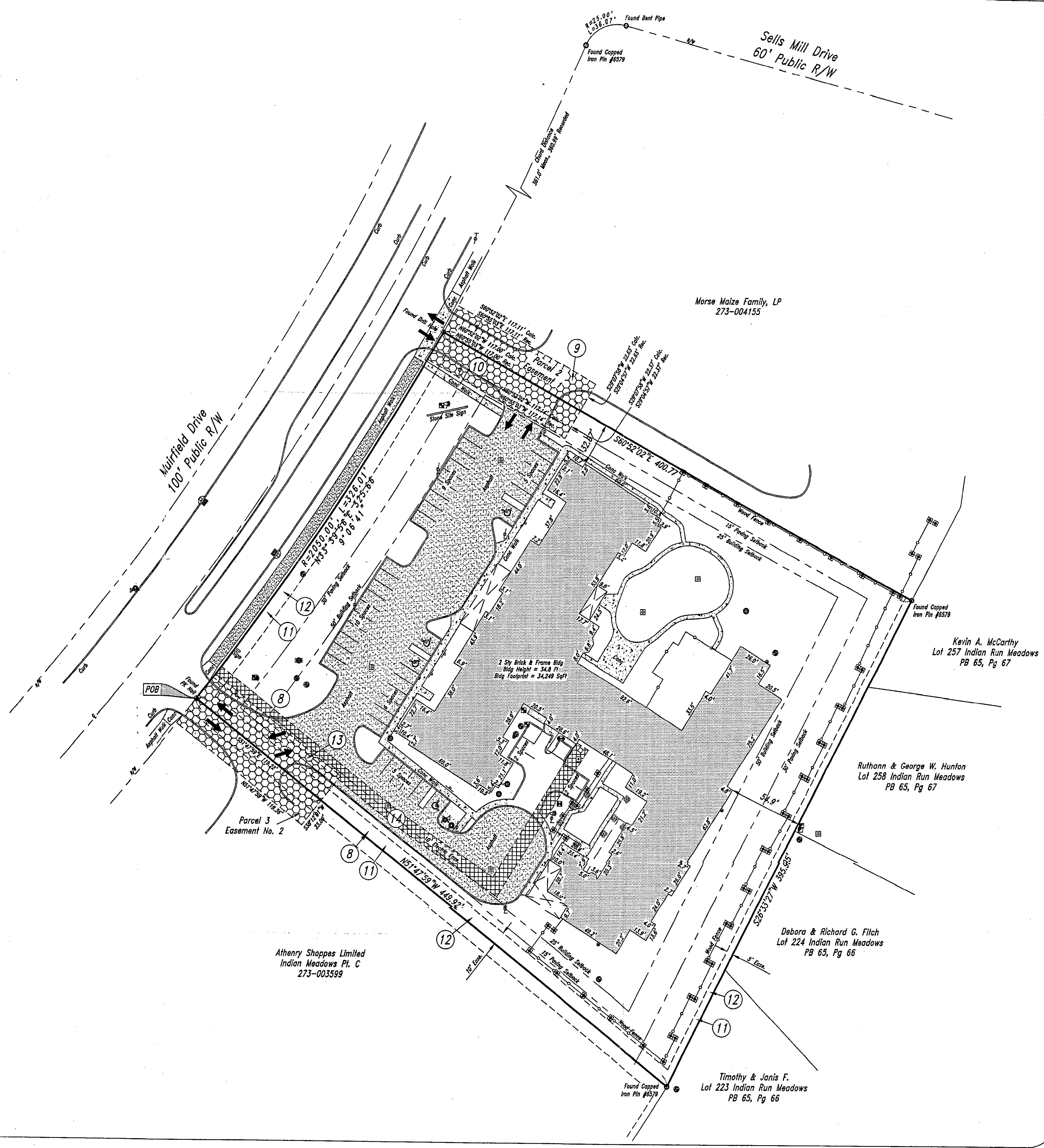




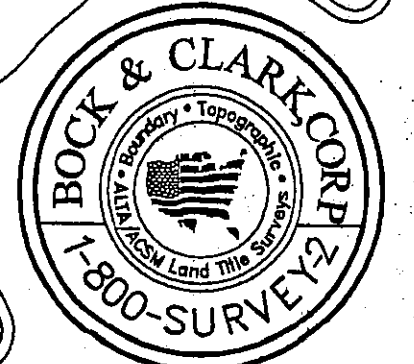
Legend of Symbols & Abbreviations

- | | | |
|--------------------|-------------------------------|----------------------|
| Light Pole | Sign (As Noted) | Storm Manhole |
| Traffic Pole | Water Valve | Storm Inlet (Square) |
| Lamp Post | Fire Hydrant | Curb Storm Inlet |
| Ground Light | Slamless Fire Hydrant | Sanitary Clean Out |
| Telephone Box | Irregular Control Valve | Gas Meter |
| Electric Generator | Concrete Column | Cast-iron |
| Electric Box | Indicates Handicapped Parking | R/W Right of Way |
| Transformer | Set Iron Pin | |
| Found Iron Pin | Found Pit Hole | |
| Found Drill Hole | | |



SCALE : 1" = 40'

ALTA/ACSM LAND TITLE SURVEY
 PREPARED FOR:
 American SL
 Date: October 24, 2005
 Project No. 20051133-0017



Bock & Clark's National Surveyors Network
 National Coordinators of ALTA/ACSM Land Title Surveys
 537 North Cleveland-Massillon Road Akron, Ohio 44333
 Phone: (800) Survey7, Fax: (330) 666-3808 www.bock-clark.com