

SURVEY OF ACREAGE PARCEL VIRGINIA MILITARY SURVEY NUMBER 478 CITY OF GROVE CITY, FRANKLIN COUNTY, OHIO

M C M X X V I

Date: July 24, 2006

Job No. 2004-0336

Scale: 1" = 100'



GRAPHIC SCALE
(IN FEET)

- = STONE FND.
- = MON. FND.
- = I.P. FND.
- = I.P. SET
- ◆ = MAG. NAIL FND.
- = MAG. NAIL SET
- ▲ = R.R. SPK. FND.
- △ = R.R. SPK. SET
- ◆ = P.K. NAIL FND.

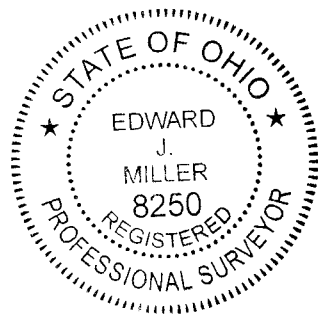
I.P. Set are 13/16" I.D. iron pipe with cap inscribed EMHT INC

BASIS OF BEARINGS: Bearings are based on the westerly line of Jackson Pike, as dedicated in "Buckeye Parkway, Jackson Pike, and Pinnacle Club Drive Dedication and Easements" of record in Plat Book 104, Page 99, being South 03° 29' 10" West.

RECEIVED

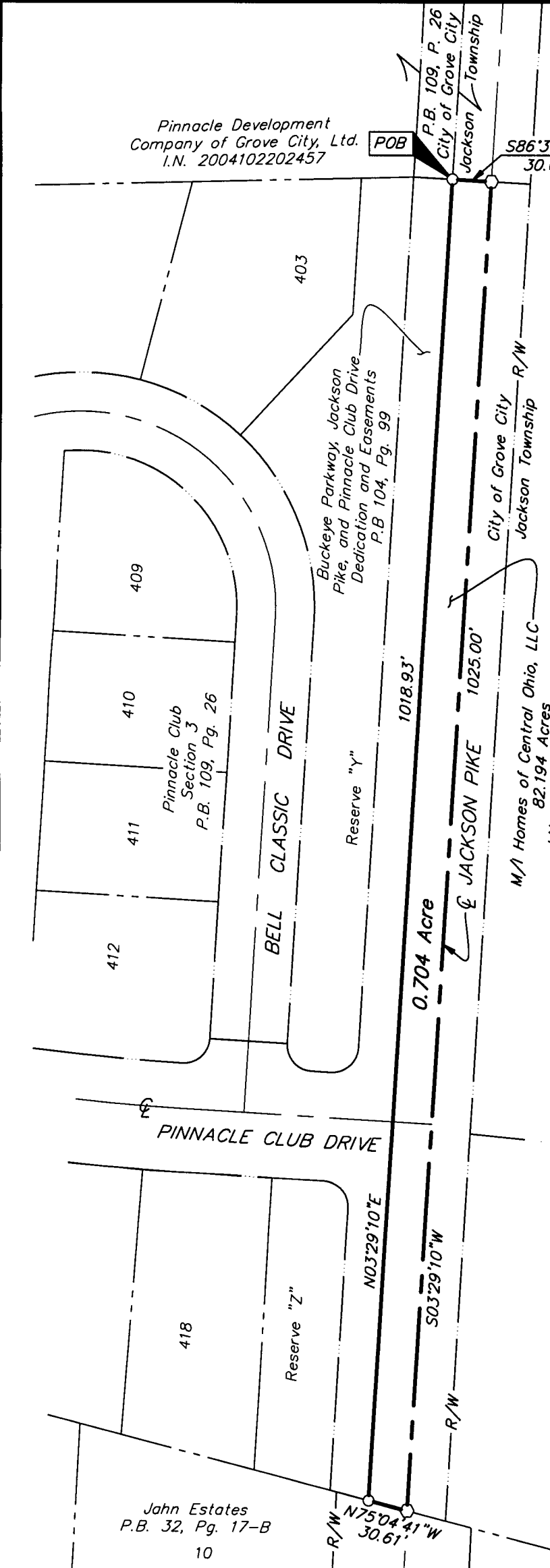
JUL 26 2006

Franklin County Engineer
 Dean C. Ringle, PE, PS



By 7/26/06
 Professional Surveyor No. 8250

\\CMHDATA1\SURVEY\PROJECT\20040336\DWG\40336BVI.DWG<LEGAL PORTRAIT> - NO XREFS - LAST SAVED BY MRSISSLER [7/26/2006 8:12:25 AM] - PLOTTED BY MRSISSLER [7/26/2006 8:12:26 AM]



Jahn Estates
 P.B. 32, Pg. 17-B
 10