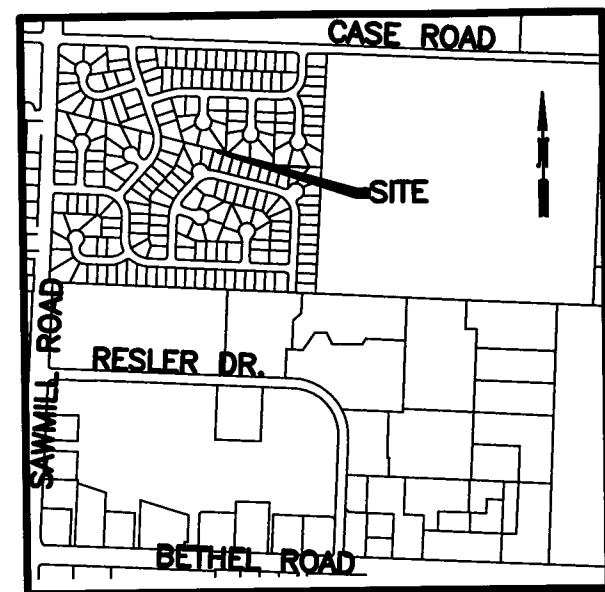


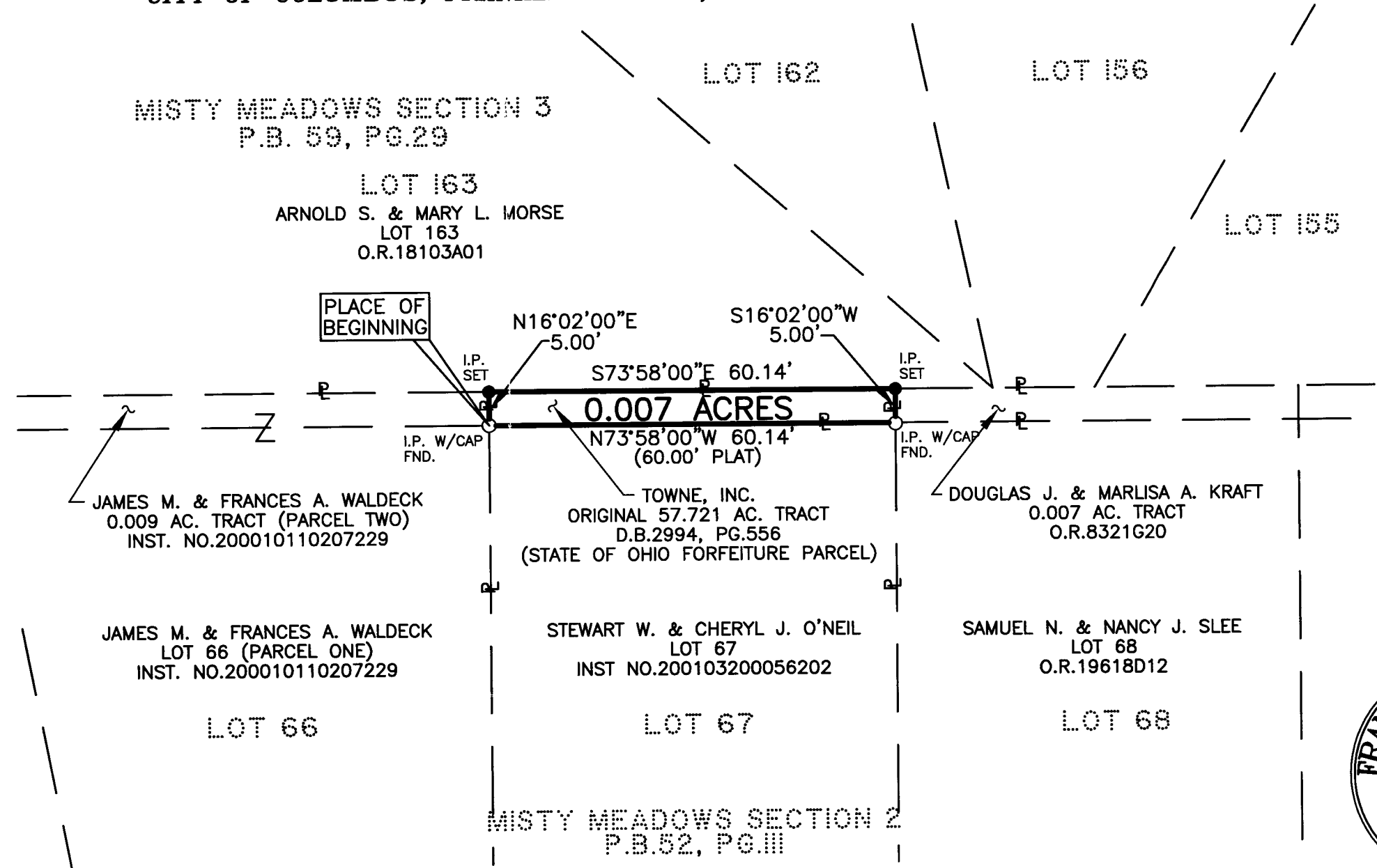
**SURVEY OF A 0.007 ACRE TRACT
SECTION 4, TOWNSHIP 2 NORTH,
RANGE 19 WEST,
UNITED STATES MILITARY LANDS
CITY OF COLUMBUS, FRANKLIN COUNTY, OHIO**



GRID NORTH



LOCATION MAP
SCALE: NONE



RECEIVED

JUL 25 2006

Franklin County Engineer
Dean C. Ringle, P.E., P.S.

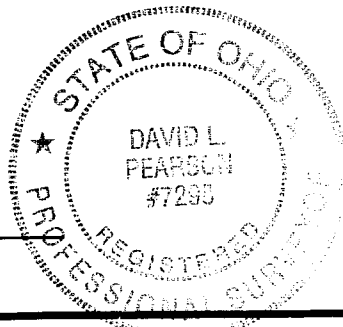
BASIS OF BEARINGS:

BEARINGS ARE BASED ON THE BEARING (S73°58'00"E) AS SHOWN ALONG THE NORTHERLY LINE OF LOT 67 OF MISTY MEADOWS SECTION 2, AS RECORDED IN PLAT BOOK 52, PAGE 111, RECORDER'S OFFICE, FRANKLIN COUNTY, OHIO.

THIS PLAT WAS PREPARED FROM AN ACTUAL FIELD SURVEY PERFORMED BY THE FRANKLIN COUNTY ENGINEER'S OFFICE, ALONG WITH PUBLIC RECORDS ON FILE IN THE FRANKLIN COUNTY RECORDER'S OFFICE AND THE FRANKLIN COUNTY ENGINEER'S OFFICE

David L. Pearson
DAVID L. PEARSON
OHIO REGISTERED SURVEYOR NO.7298

7/14/2006
DATE



NOTE:
I.P.'S SET ARE 5/8" REBAR WITH YELLOW PLASTIC CAPS STAMPED "FRANKLIN COUNTY ENGINEER".



DATE: 05-09-06 DRAWING: 590158958WES
DRAWN BY: DKT

REVISIONS		
DATE	DESCRIPTION	BY