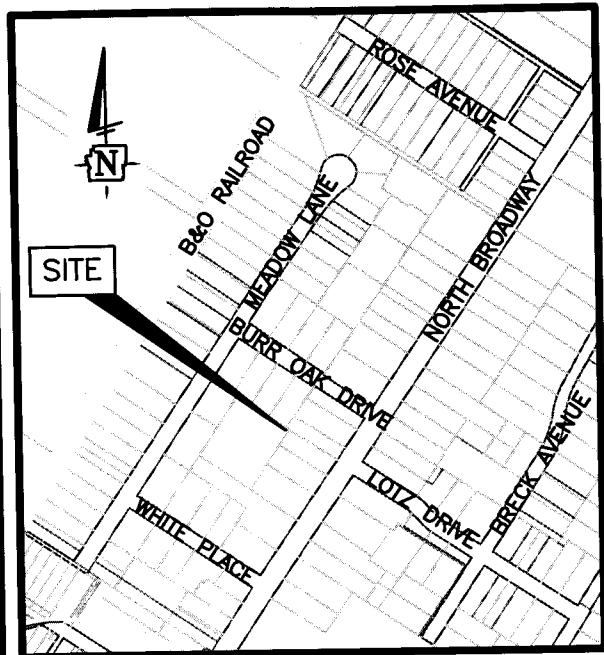
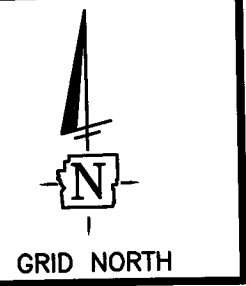


SURVEY OF A 0.002 ACRE TRACT

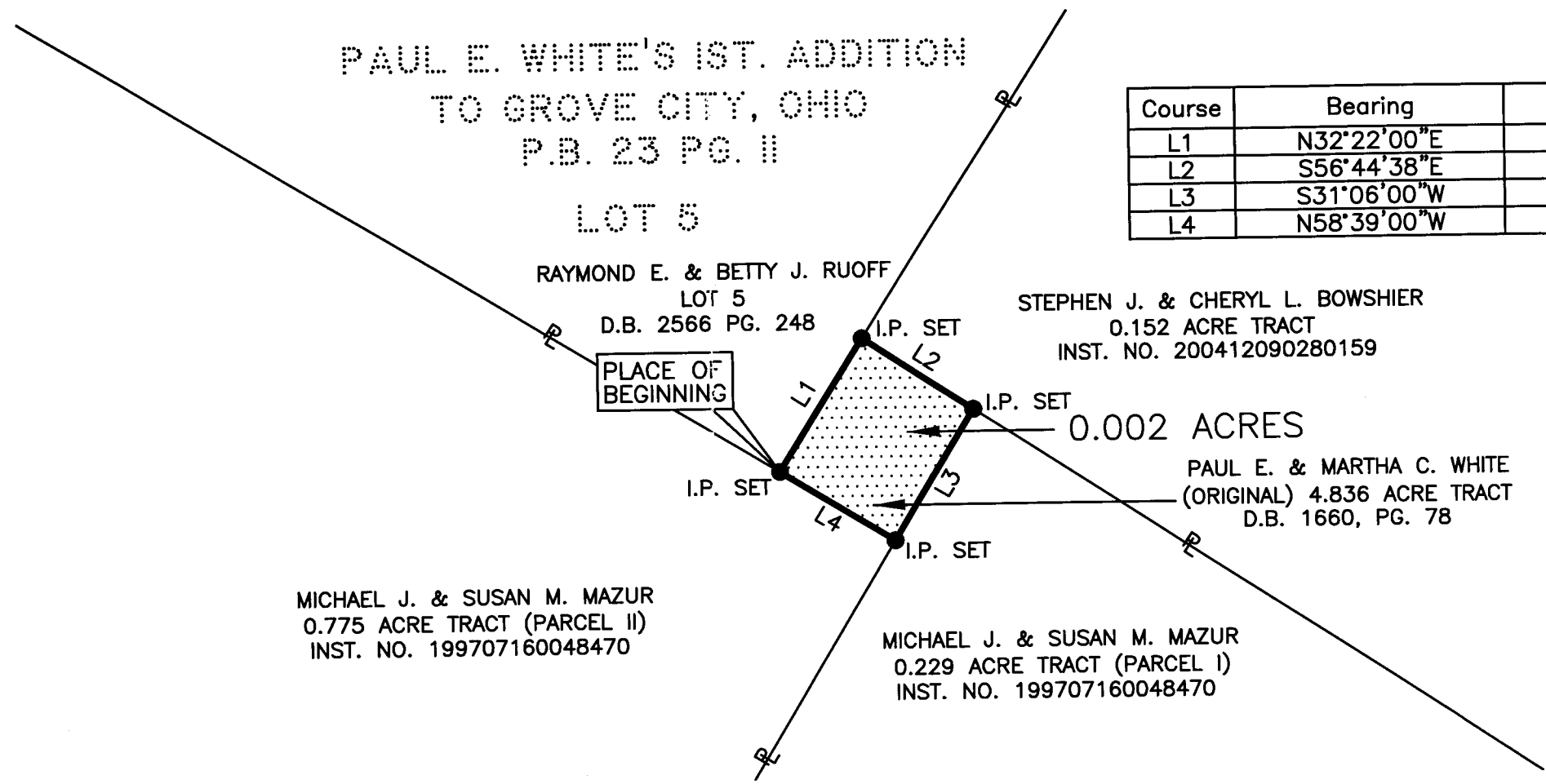
VIRGINIA MILITARY SURVEY NO. 1388

CITY OF GROVE CITY, FRANKLIN COUNTY, OHIO



LOCATION MAP
SCALE: NONE

Course	Bearing	Distance
L1	N32°22'00"E	9.99'
L2	S56°44'38"E	8.36'
L3	S31°06'00"W	9.71'
L4	N58°39'00"W	8.57'



RECEIVED

JUL 25 2006

Franklin County Engineer's Office
David L. Pearson

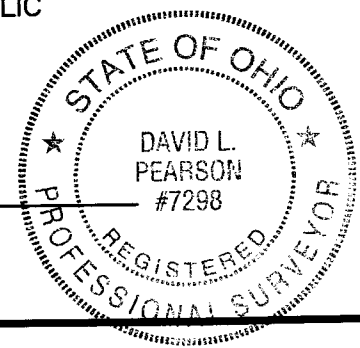
BASIS OF BEARINGS:

BEARINGS ARE BASED ON THE BEARING (N58°39'00"W) AS SHOWN ALONG THE SOUTH WESTERLY LINE OF LOT 5 OF PAUL E. WHITE'S 1ST. ADDITION TO GROVE CITY, OHIO, AS RECORDED IN PLAT BOOK 23, PAGE 11, RECORDER'S OFFICE, FRANKLIN COUNTY, OHIO.

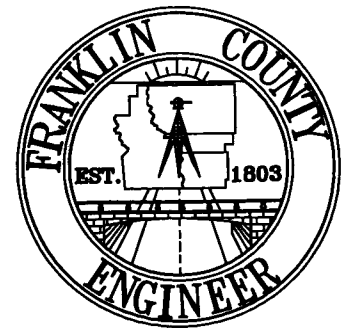
THIS PLAT WAS PREPARED FROM AN ACTUAL FIELD SURVEY PERFORMED IN MAY 2006, BY THE FRANKLIN COUNTY ENGINEER'S OFFICE, ALONG WITH PUBLIC RECORDS ON FILE IN THE FRANKLIN COUNTY RECORDER'S OFFICE AND THE FRANKLIN COUNTY ENGINEER'S OFFICE

David L. Pearson
DAVID L. PEARSON
OHIO REGISTERED SURVEYOR NO. 7298

7/14/2006
DATE



NOTE:
I.P.'S SET ARE 5/8" REBAR WITH YELLOW PLASTIC CAPS STAMPED "FRANKLIN COUNTY ENGINEER".



DATE: 06-22-06 DRAWING: 040-000616
DRAWN BY: ACK

REVISIONS		
DATE	DESCRIPTION	BY