

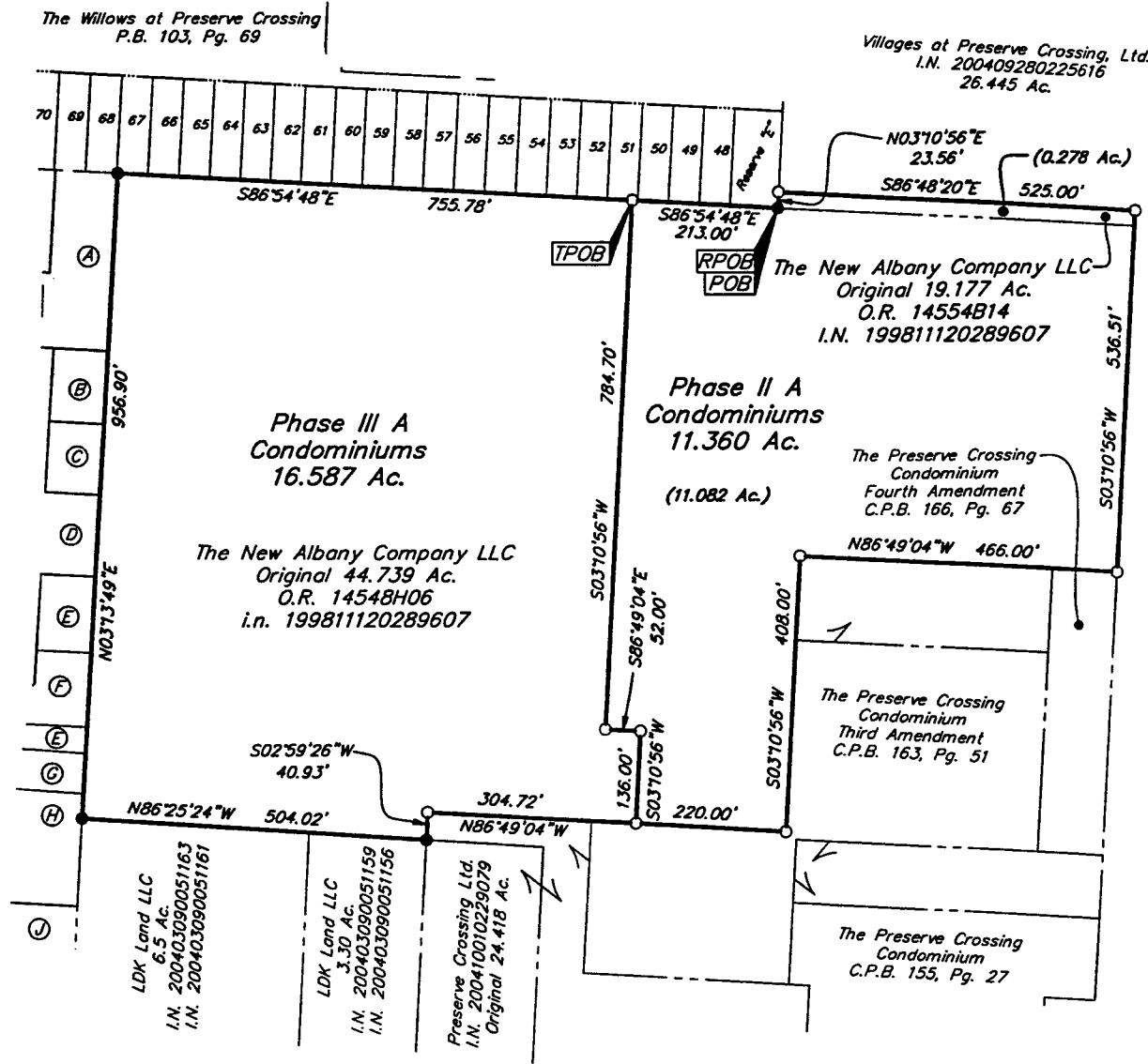
## SURVEY OF ACREAGE PARCEL QUARTER TOWNSHIP 3, TOWNSHIP 2, RANGE 16 UNITED STATES MILITARY LANDS CITY OF COLUMBUS, FRANKLIN COUNTY, OHIO

Date: June 7, 2006

Scale: 1" = 200'

Job No: 2006-1184

- Ⓐ Homestead at The Preserve Condominium  
Fourteenth Amendment Part "B"  
C.P.B. 129, Pg. 34
- Ⓑ Homestead at The Preserve Condominium  
22d Amendment  
C.P.B. 155, Pg. 33
- Ⓒ Homestead at The Preserve Condominium  
23d Amendment Part "D"  
C.P.B. 166, Pg. 90
- Ⓓ Homestead at The Preserve Condominium  
Fourteenth Amendment Part "A"  
C.P.B. 129, Pg. 34
- Ⓔ Tuckerman Home Group, Inc.  
I.N. 200510260225231
- Ⓕ Homestead at The Preserve Condominium  
23d Amendment Part "C"  
C.P.B. 166, Pg. 90
- Ⓖ Homestead at The Preserve Condominium  
Sixth Amendment Part "D"  
C.P.B. 100, Pg. 65
- Ⓗ Homestead at The Preserve Condominium  
Eleventh Amendment Part "A"  
C.P.B. 117, Pg. 96
- Ⓙ Homestead at The Preserve Condominium  
C.P.B. 89, Pg. 29

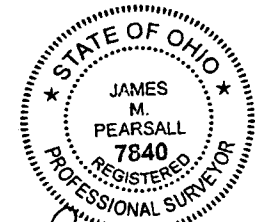


○ = I.P. SET  
 ● = 3/4" I.P. FND.  
 I.P. Set are 13/16" I.D. iron pipe with cap inscribed EMHT INC



GRAPHIC SCALE  
(IN FEET)

**BASIS OF BEARINGS:**  
 Bearings are based on the Ohio State Plane Coordinate System—South Zone per NAD83 (1986 adjustment). Control for bearings was from coordinates of monuments FCGS 6666 and 6667, having a bearing of South  $86^{\circ}56'02''$  East, established by the Franklin County Engineering Department using Global Positioning System procedures and equipment.



By James M. Pearsall  
 Professional Surveyor No. 7840

EXHIBIT "A"  
(Page 5 of 5)