



Evans, Mechwart, Hambleton & Tilton, Inc.  
 Engineers • Surveyors • Planners • Scientists  
 5500 New Albany Road, Columbus, OH 43054  
 Phone: 614.775.4500 Fax: 614.775.4800

**SURVEY OF ACREAGE PARCEL**  
**QUARTER TOWNSHIP 4, TOWNSHIP 2, RANGE 16**  
**UNITED STATES MILITARY LANDS**  
**VILLAGE OF NEW ALBANY, FRANKLIN COUNTY, OHIO**

Date: June 5, 2006

Job No. 2005-2489

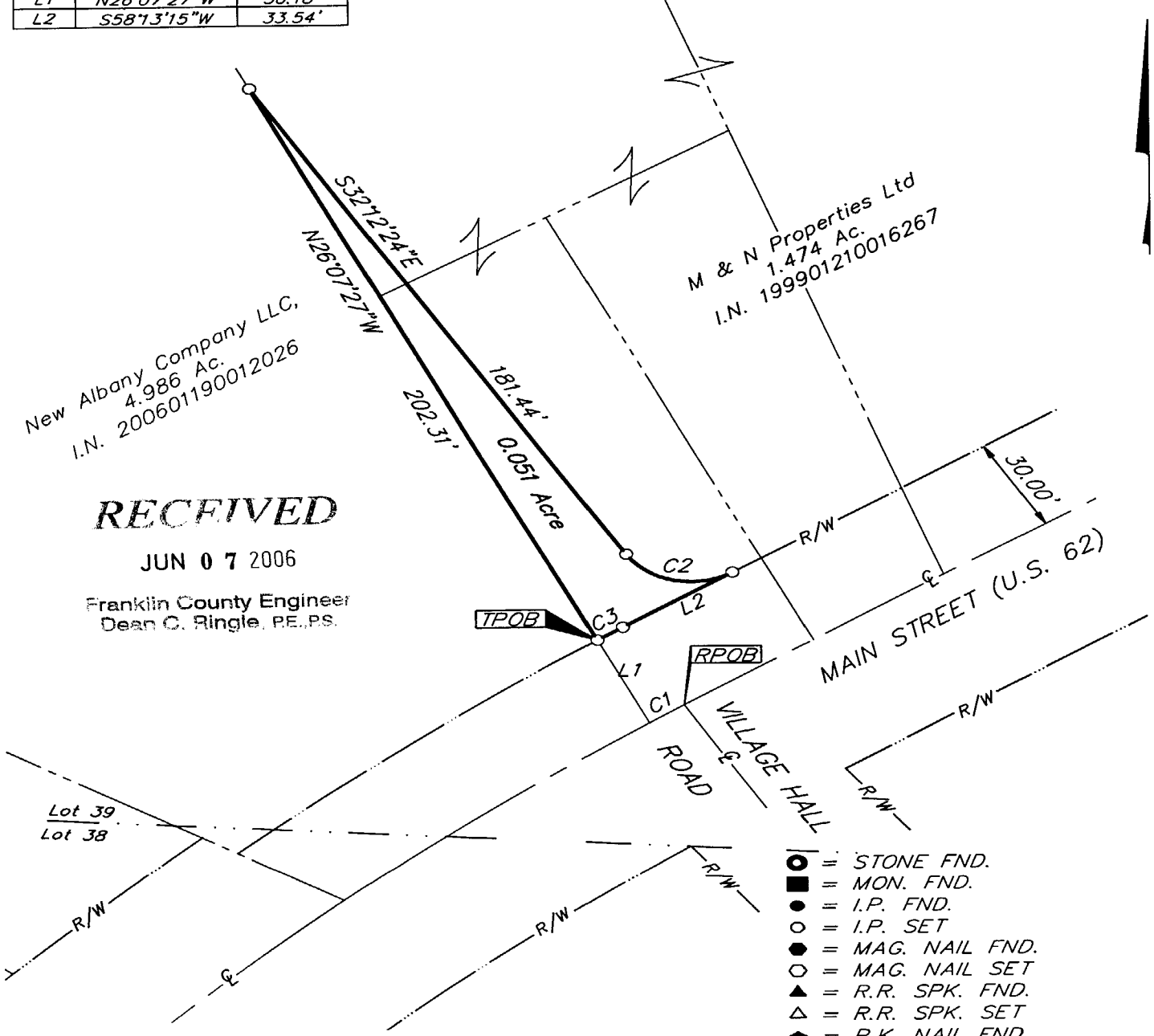
Scale: 1" = 40'

CURVE TABLE					
CURVE	DELTA	RADIUS	ARC	CH BRG	CH
C1	00°45'09"	816.69'	10.73'	S57°50'41"W	10.73'
C2	89°34'21"	20.00'	31.27'	S76°59'34"E	28.18'
C3	00°31'29"	846.69'	7.75'	S57°57'40"W	7.75'

LINE TABLE		
LINE	BEARING	DISTANCE
L1	N26°07'27"W	30.18'
L2	S58°13'15"W	33.54'

**BASIS OF BEARINGS:**

Bearings are based on the Ohio State Plane Coordinate System—South Zone as per NAD83 (1986 adjustment). Control for bearings was from coordinates of monuments FRANK 80 & FRANK 180, established by the Franklin County Engineering Department using Global Positioning System procedures and equipment, which determined a bearing of North 44° 25' 19" East for a portion of the centerline of U.S. 62.



**RECEIVED**

JUN 07 2006

Franklin County Engineer  
 Dean C. Ringle, PE, PS.

- = STONE FND.
- = MON. FND.
- = I.P. FND.
- = I.P. SET
- = MAG. NAIL FND.
- = MAG. NAIL SET
- ▲ = R.R. SPK. FND.
- △ = R.R. SPK. SET
- ◆ = P.K. NAIL FND.

I.P. Set are 13/16" I.D. iron pipe with cap inscribed EMHT INC

Note:  
 This survey was prepared using documents of record, prior plats of survey, and observable field evidence.



GRAPHIC SCALE (IN FEET)

By *James M. Pearsall* 6/6/06  
 Professional Surveyor No. 7840  
 STATE OF OHIO  
 JAMES M. PEARSALL  
 PROFESSIONAL SURVEYOR

\\CHIDA1\1\SURVEY\PROJECT\20052489\DWG\52489BV.DWG - LEGAL PORTRAIT - NO XREFS - LAST SAVED BY JMEYER [5/6/2006 4:32:04 PM] - PLOTTED BY JMEYER [6/6/2006 4:32:05 PM]