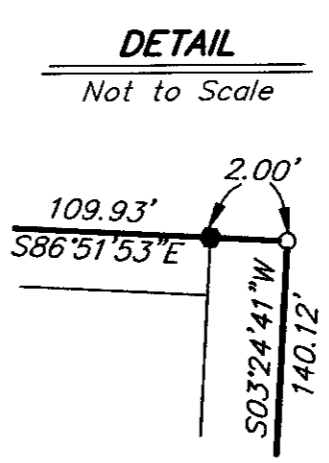
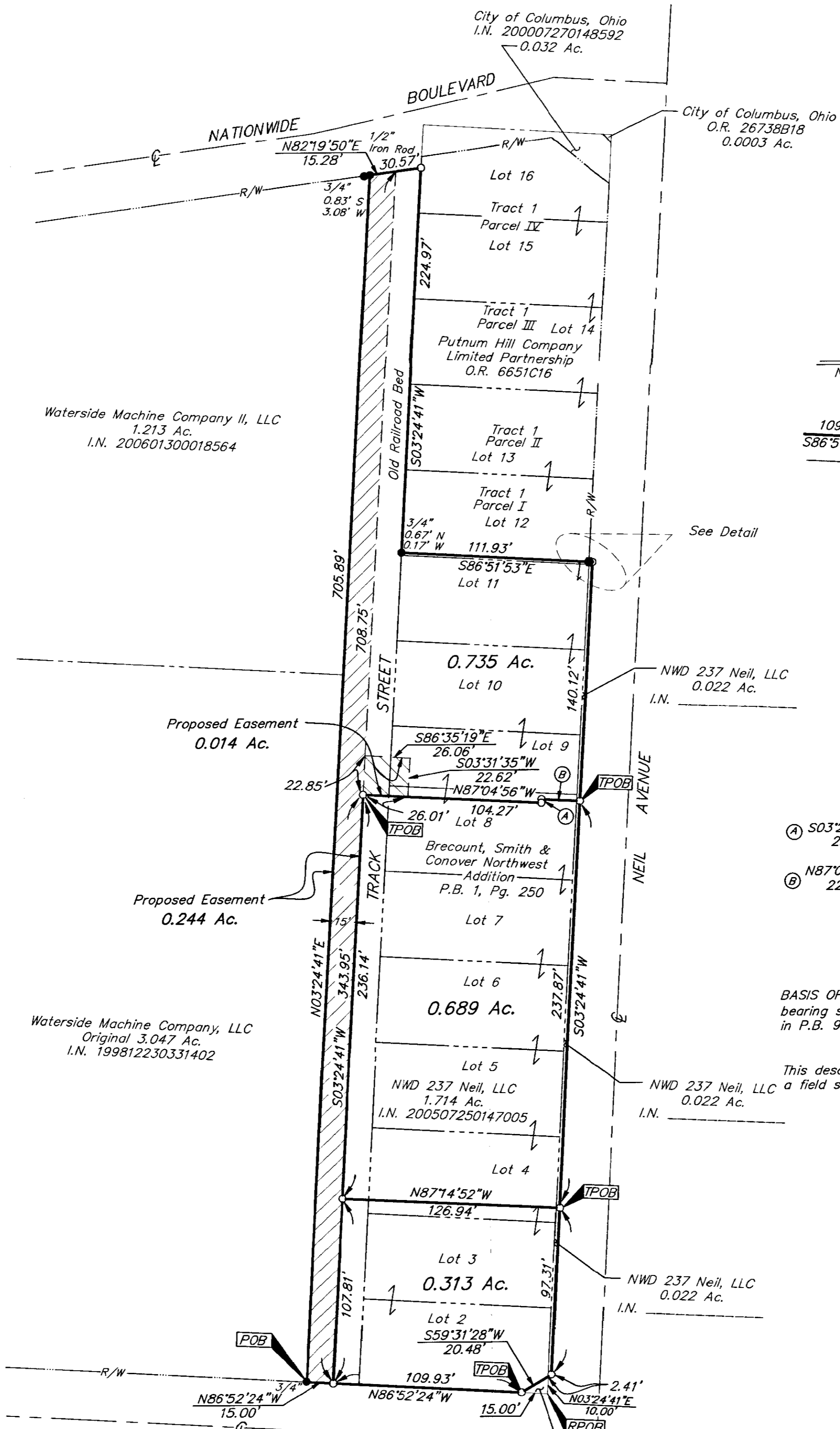


# SURVEY OF ACREAGE PARCELS

## SECTION 8, TOWNSHIP 5, RANGE 22

### REFUGEE TRACT

#### CITY OF COLUMBUS, FRANKLIN COUNTY, OHIO



- Ⓐ S03°24'41"W 2.10'
- Ⓑ N87°04'56"W 22.66'

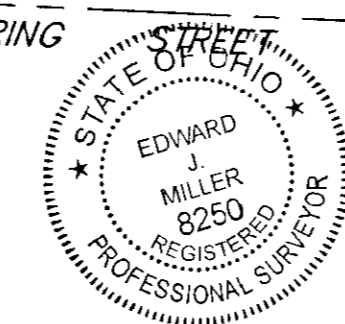
**BASIS OF BEARINGS:** Bearings are based on the same bearing system as "Arena District Subdivision" of record in P.B. 90, Pg. 75.

This description was prepared from existing records and a field survey performed in March 2004.

**RECEIVED**  
MAY 18 2006  
Franklin County Engineer  
Dean C. Ringle, P.E., P.S.

- = STONE FND.
- = MON. FND.
- = I.P. FND.
- = I.P. SET
- = MAG. NAIL FND.
- = MAG. NAIL SET
- ▲ = R.R. SPK. FND.
- △ = R.R. SPK. SET
- = P.K. NAIL FND.

I.P. Set are 1 3/16" I.D. iron pipe with cap inscribed EMHT INC



By: 5/17/06  
Professional Surveyor No. 8250

<b>EMHT</b> Evans, Mechwart, Hambleton & Tilton, Inc. Engineers • Surveyors • Planners • Scientists 5500 New Albany Road, Columbus, OH 43254 Phone: 614.775.4500 Fax: 614.775.4800		Date: April 17, 2006
		Scale: 1" = 50'
		Job No: 2005-1937
		Sheet: 1 of 1
<b>REVISIONS</b>		
MARK	DATE	DESCRIPTION
JRM	5/12/06	Updated linework and added 0.022 acre parcel to east side of lot

I:\CMHDATA1\SURVEY\PROJECT\20051937\DWG\51937BVDWG<18>24 PORTRAIT> - NO XREFS - LAST SAVED BY JMASTON [5/12/2006 11:41:10 AM] - PLOTTED BY JMASTON [5/12/2006 11:52:26 AM]